



DG TREN

**PRIORITY  
AXIS N° 6  
JULY 2007**

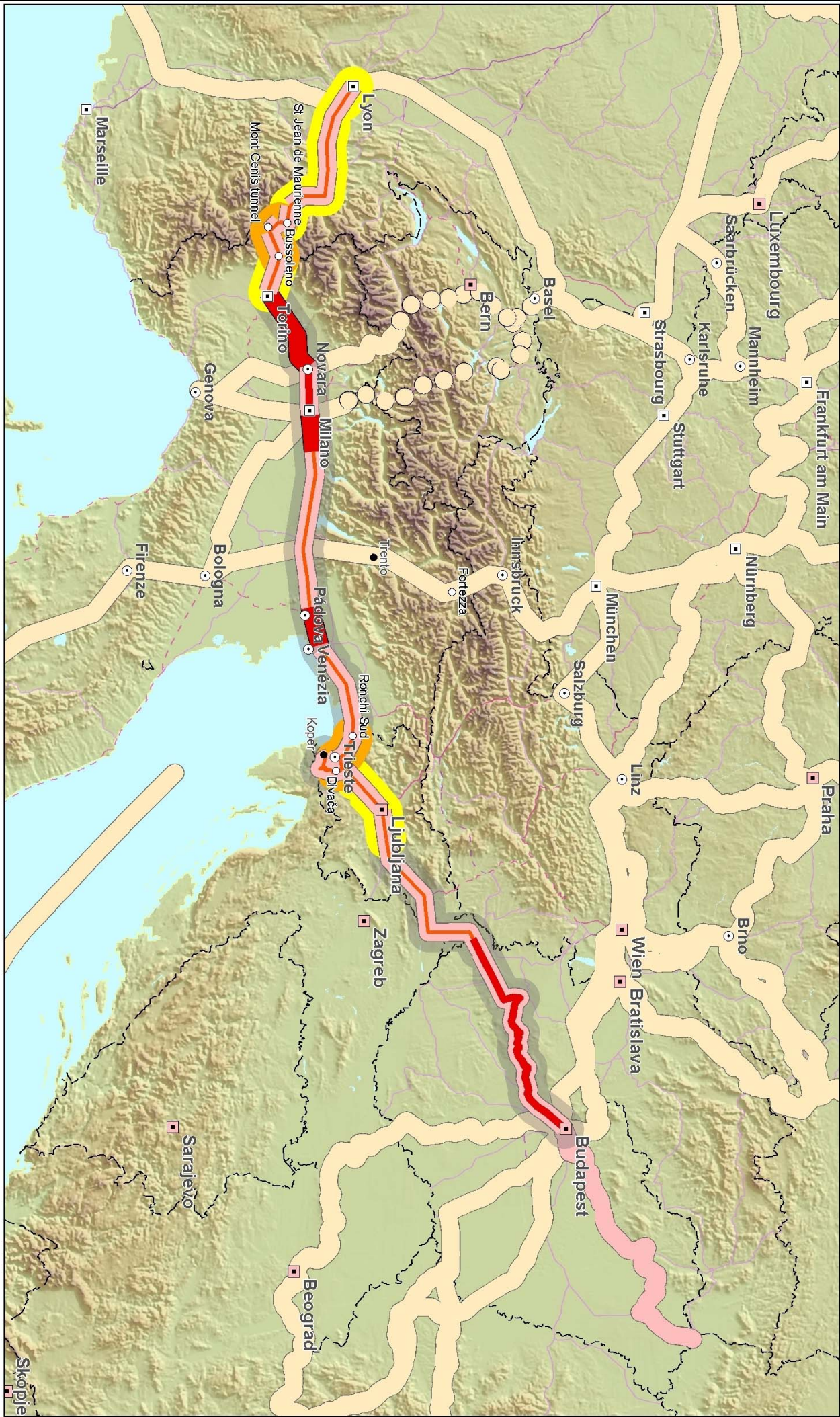
Trans-European Transport Network  
Priority Projects



© Eurogeographics 2007 for the administrative boundaries  
Cartography: DG TREN, 25/07/2007

# RAILWAY AXIS LYON-TRIESTE-DIVAČA/KOPER-DIVAČA- LJUBLJANA-BUDAPEST-UKRAINIAN BORDER Bottlenecks and cross-border sections

- Planned Conventional
- Planned HighSpeed
- Planned UpgradedHighSpeed
- Existing Conventional
- Existing HighSpeed
- Existing UpgradedHighSpeed
- Priority axis n° 6
- Other priority axes
- Priority sections
- Cross-border sections
- Bottlenecks
- Under preparation
- Under construction
- Completed



Skopje