



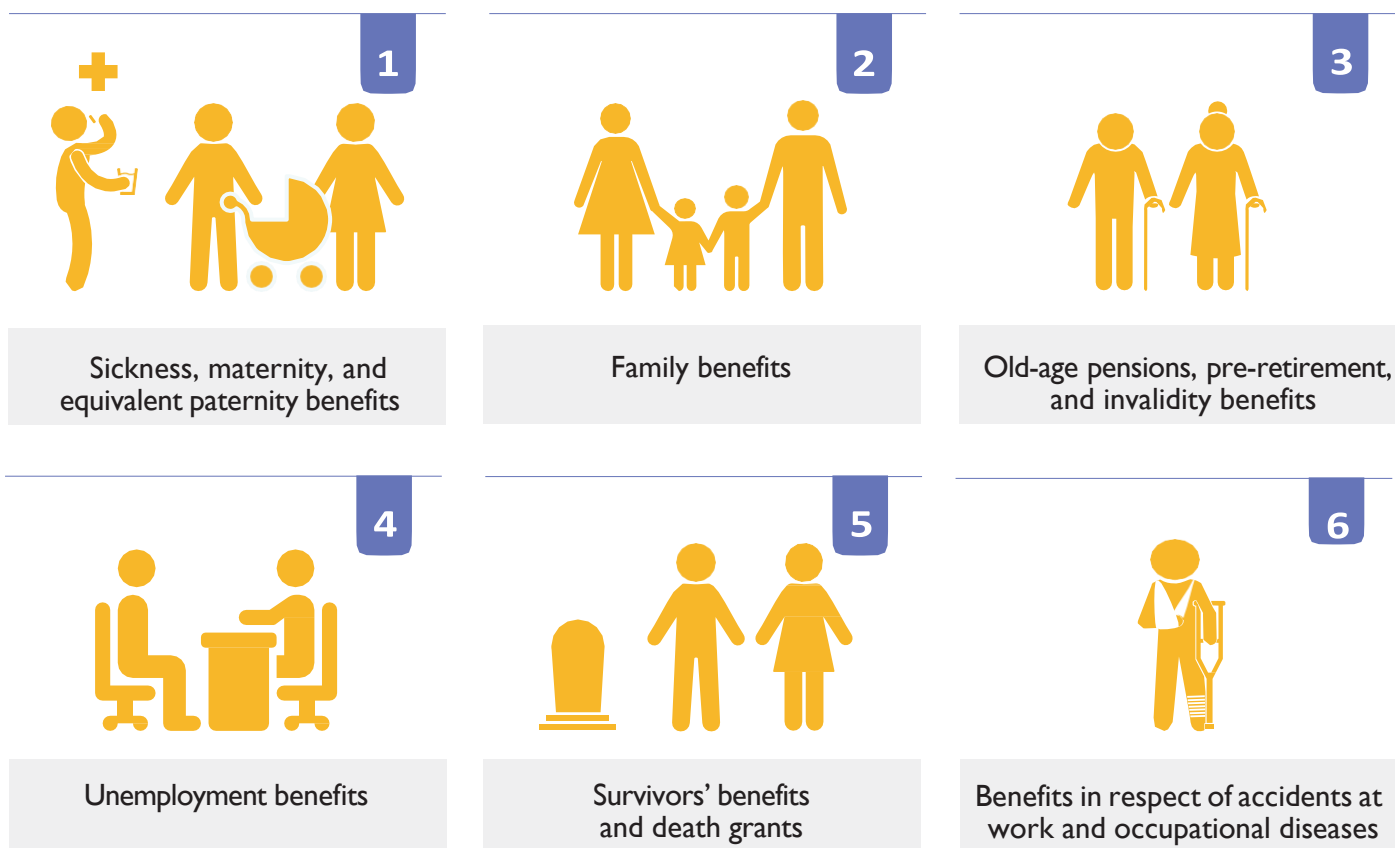
SOCIAL SECURITY COORDINATION

DIGITAL INFORMATION EXCHANGE SYSTEM

WHAT IS EESSI?

The Electronic Exchange of Social Security Information system (EESSI) connects electronically 3.400 social security institutions of the 27 EU Member States plus Iceland, Liechtenstein, Norway and Switzerland and the United Kingdom. It replaces the paper-based exchanges to the benefit of citizens who have lived and worked in several of these countries.

Exchanges can cover:

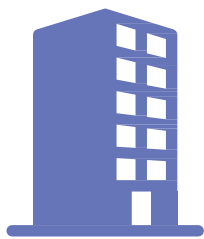


This system speeds up and simplifies in a secure way the information exchange between social security institutions. Social security institutions across the EU plus Iceland, Liechtenstein, Norway, Switzerland and the United Kingdom are able to exchange information digitally through EESSI.

Example:

A person worked in Estonia, France and Italy throughout her career and asks the Italian social security institution to calculate her pension. This institution will contact Estonia and France through EESSI to obtain the information related to her pension rights in all three countries.

WHAT ARE THE BENEFITS?



For citizens and businesses:

- ✓ Quicker and more efficient processing of social security benefits



For Institutions:

- ✓ More correct and complete data thanks to standard electronic forms and procedures
- ✓ Combating fraud and error
- ✓ More efficient implementation of social security coordination rules

WHEN / WHAT?

Jul
2017

Jan
2019

Jan
2021

Jan
2024

Apr
2025

2017 - European Commission launches the EESSI software

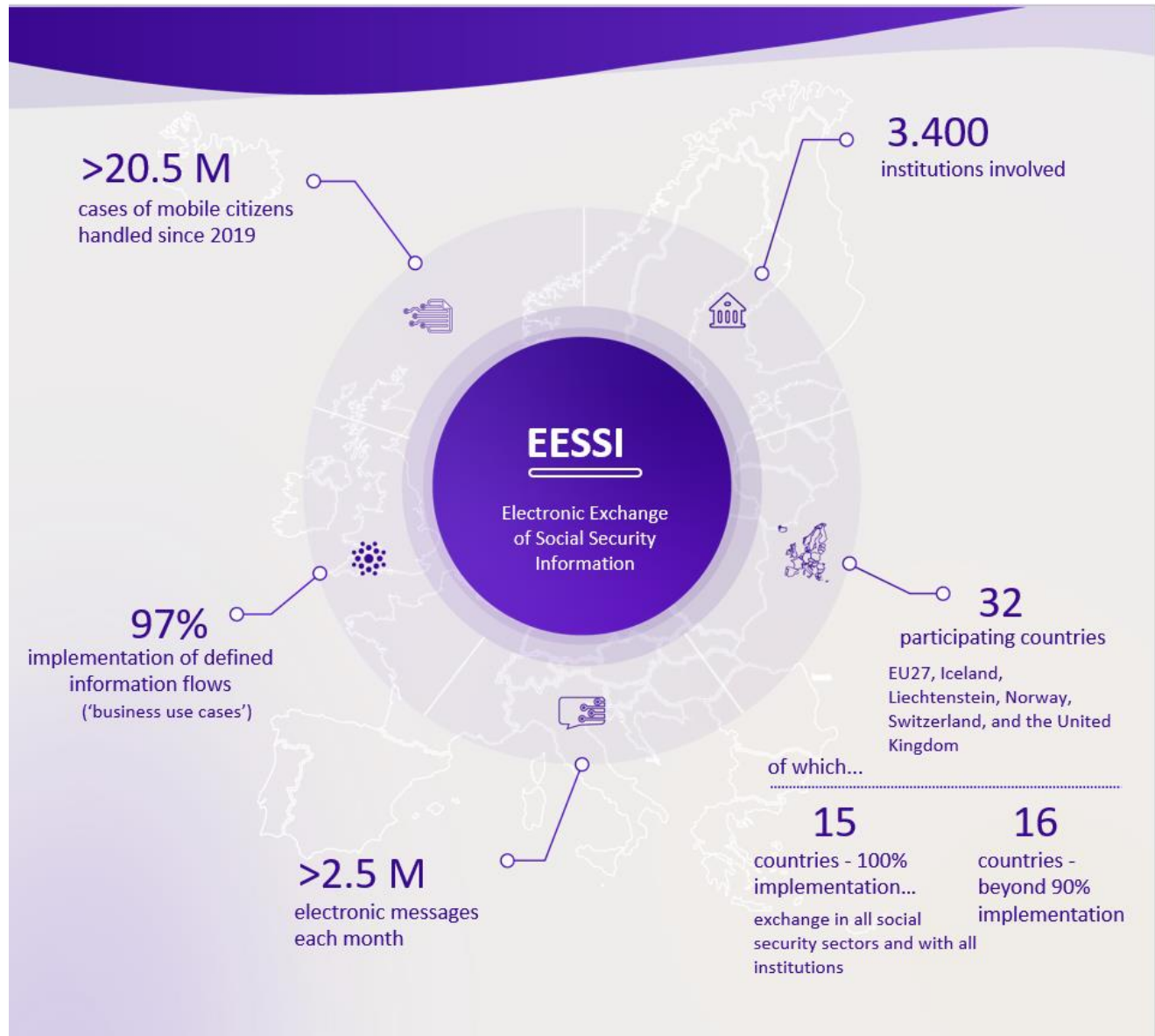
First exchange within the EESSI system between Austria and Slovenia.

All 32 Participating Countries are connected to the EESSI system and able to exchange electronically on some of the business processes.

15 Countries fully in production. All business processes related to citizens' claim in production by all countries except for pension sector in Switzerland.

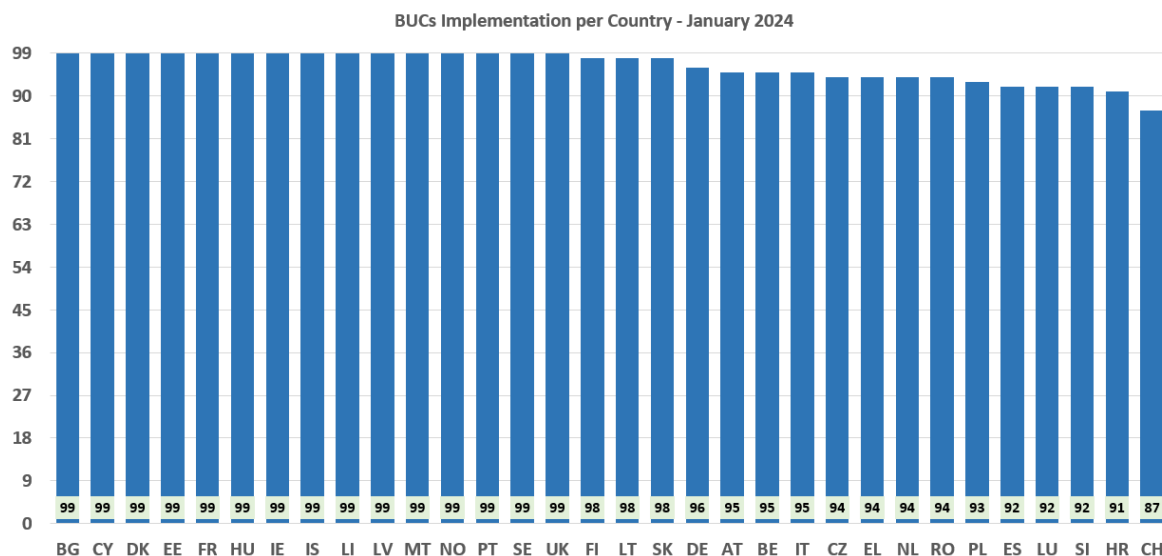
Expected date to have EESSI in full production by all 32 Participating Countries.

EESSI in a nutshell

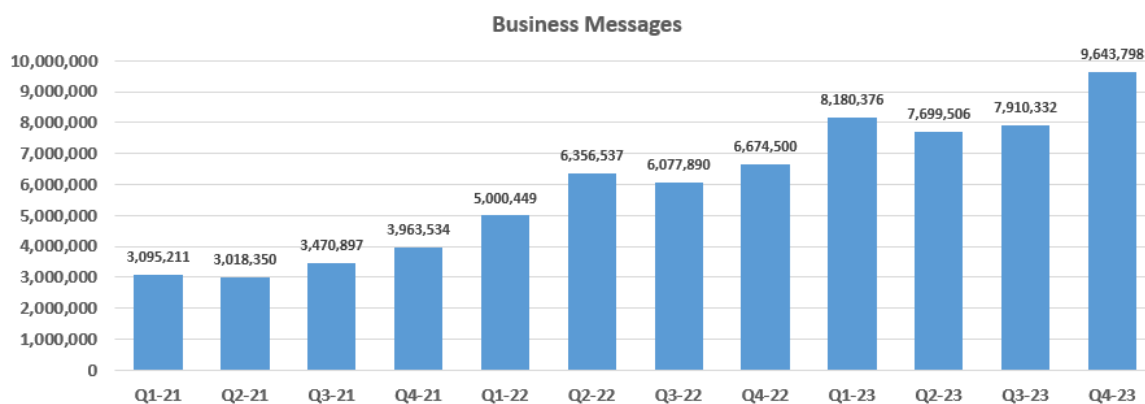


How EESSI works in detail

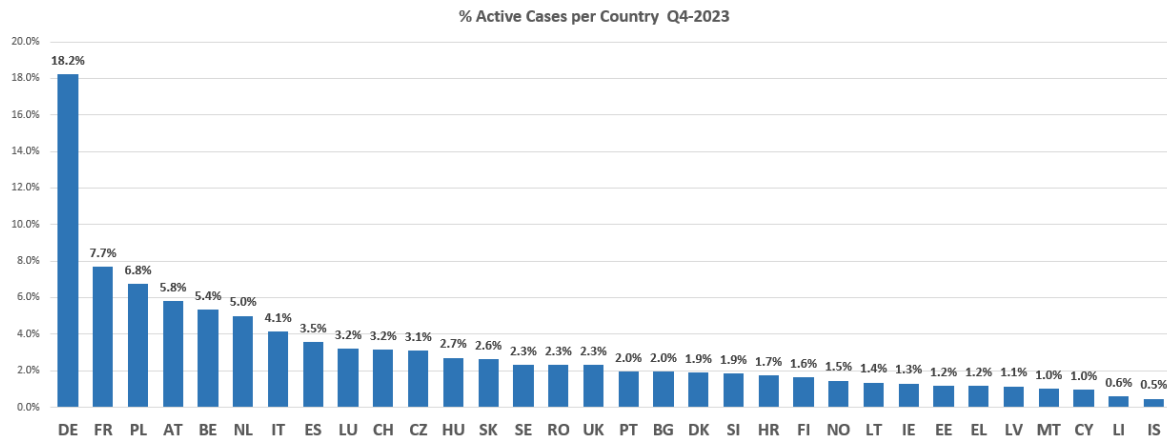
EESSI procedures involve 99 business use cases (BUC), 97% are already implemented by the countries, 15 countries implemented all of them. At present, all cases related to citizen's claims are processed through the EESSI system, except for the pension sector for cases involving Switzerland.



The volume of EESSI business messages exchanged across Europe has been steadily rising, following the progressive implementation of the system in the different countries and institutions. This underscores the significance of having a system in place to facilitate seamless exchanges.



EESSI messages are grouped in business cases that correspond to specific claims. The following table shows the percentage of active cases per country during Q4-2023.



The European Commission continues to work together with the participating countries for a continuous improvement of the EESSI system to reduce the time experienced by the citizens to resolve their EU international social security cases.