

Wellcome Trust Work in the Funding of Research: Trends and Challenges

Dr Mark Walport

Director

Wellcome Trust



The Wellcome Trust

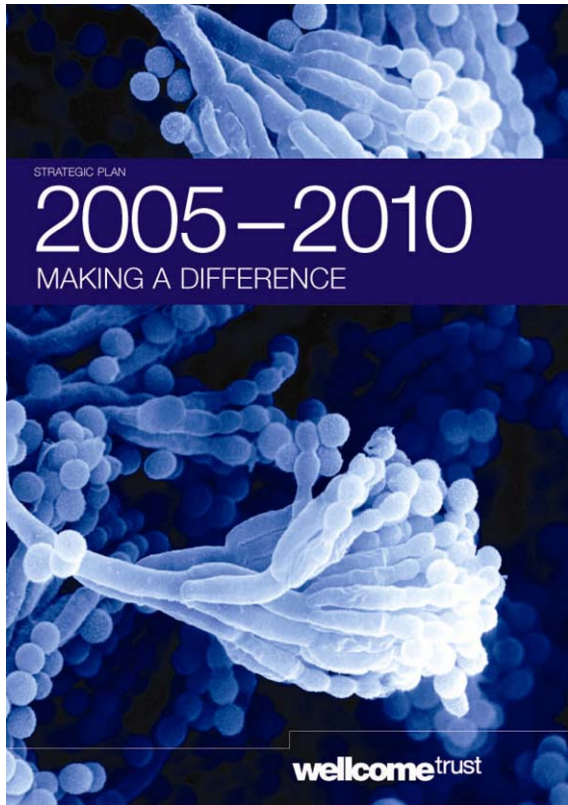
- an independent research-funding charity
- established 1936
- funded from private endowment
- managed for long-term stability and growth

Mission

“To foster and promote research with the aim of improving human and animal health”



Wellcome Trust today

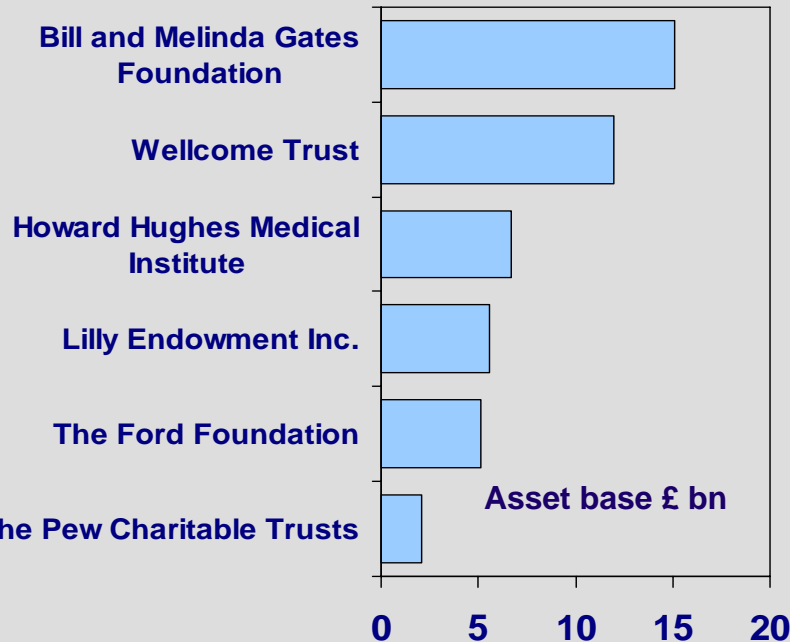
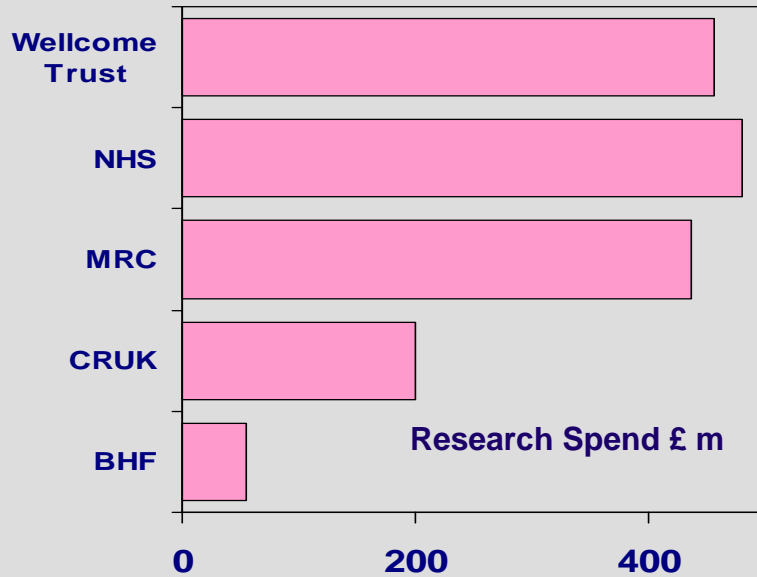


Strategic Plan 2005-2010



Key player

- asset base valued at £12 billion (September 2005)
- spend in 2004-5 of just under £460 million
- estimated spend in excess of £2 billion over next 5 years

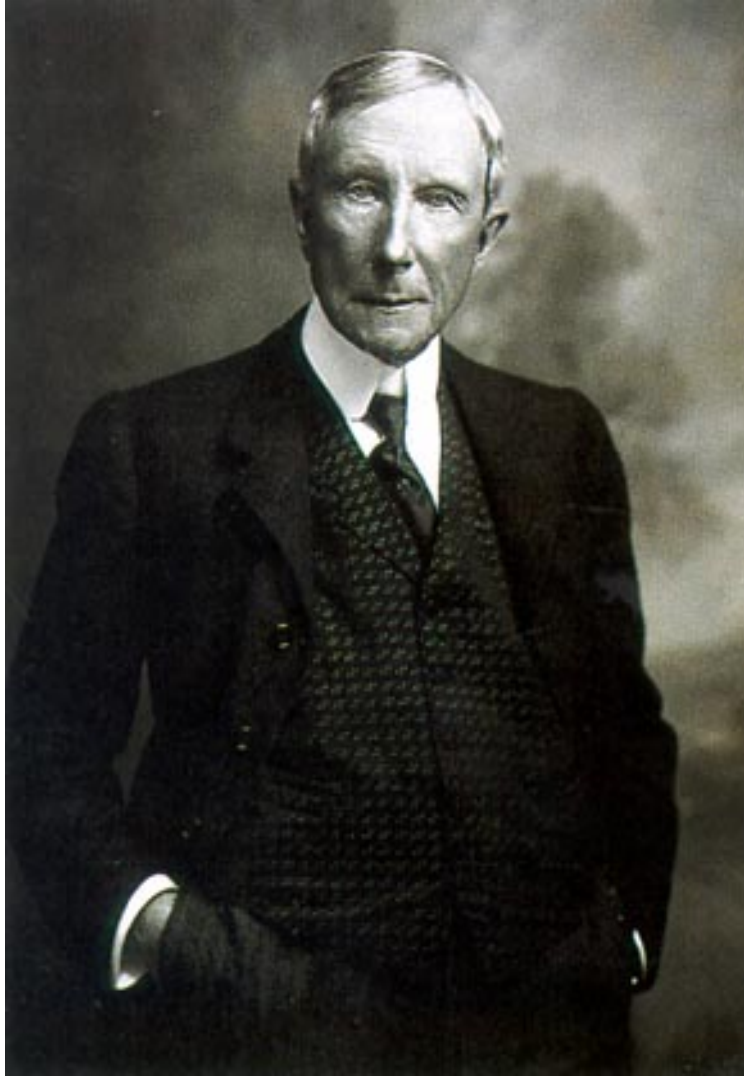


Fostering biomedical science

- ensure the single biggest element of our funding supports investigator-led research and career fellowships
- retain around 10% of funding each year to respond flexibly to unanticipated opportunities
- continue to support the Wellcome Trust Sanger Institute as a world-leading centre for genomics research



The difficult art of giving...



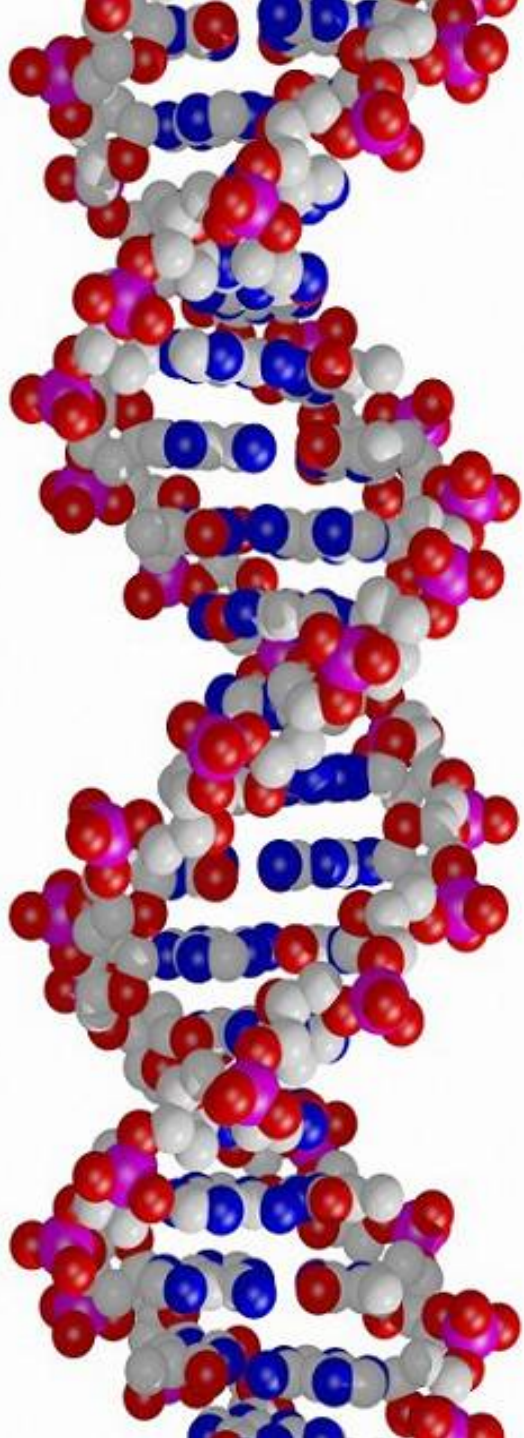
“I am in trouble Mr Gates... The pressure of these appeals for gifts has become too great for endurance....I am so constituted as to be unable to give away money with any satisfaction until I have made the most careful enquiry as to the worthiness of the cause. These investigations are now taking more of my time than Standard Oil itself.”

Letter from John D Rockefeller writing to Frederick T Gates, secretary of the American Baptist Education Society, 1892 (in *The Difficult Art of Giving*, Wilder Penfield, Little Brown and Co, 1967)

What foundations can do...

- independent
- ask difficult questions
- leverage
- take a long term view
- apolitical advocates
- good partners





Independence

Human Genome Project

- gold standard sequence
- provides the foundations of genome sequence and genomic variation
- Sanger Institute world leading centre for the analysis of genomes; home of the EBI
- free global access to sequence data on the internet, regularly updated and annotated



Ask difficult questions

National Survey of Sexual Attitudes and Lifestyles

- Margaret Thatcher refused use of public funds
- major improvements in our understanding of the spread of sexually transmitted disease

Sexual myths exploded

A comprehensive survey of British sexual behaviour shows increasing commitment to monogamy and responsibility, especially among the young. **CHRISTINA HARDYMENT** reports



A LAST, the answer to the question of an adult's first sexual experience is a fairly common one. It is usually between the ages of 16 and 18, and is usually with a partner who is not a friend or a family member. The average age of first sexual experience is 17.5, according to a survey of 10,000 young people in Britain, which was published in the *British Medical Journal* on January 24. The survey, which was conducted by the Centre for Family Studies, shows that the average age of first sexual experience is 17.5, and that 70 per cent of young people have had sex by the age of 20. The survey also found that 80 per cent of young people have had sex with a partner who is not a friend or a family member.

Why did the Government attempt to block the first national survey of sexual behaviour?

No facts, please, we're British

MARGOT NORMAN



Margaret Thatcher would not have been surprised to find that the British people are not as sexually liberal as they are often portrayed to be. In a survey of 10,000 young people in Britain, which was published in the *British Medical Journal* on January 24, the average age of first sexual experience is 17.5, and that 70 per cent of young people have had sex by the age of 20. The survey also found that 80 per cent of young people have had sex with a partner who is not a friend or a family member.

THIS WEEK

5-12-92

What Maggie didn't want to know

Phyllida Brown

A Lifetime's heterosexual partners



The British findings indicate that more than half of those in high risk of HIV infection—such as those with many sexual partners and intravenous drug users—have not taken an HIV test. If the proportion of seropositive and untested people who are in high risk is the same, then the number of people in Britain with HIV could be twice what it is at present. The survey also found that 80 per cent of young people have had sex by the age of 20, and that 70 per cent of young people have had sex with a partner who is not a friend or a family member.

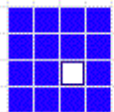
Those who become sexually young are less likely to pass their exams

wellcome trust

PPPs – after the human genome

SNP and HapMap consortia

- International SNP consortium
 - sequenced 10m SNPs
- International HapMap consortium
 - genetic factors in disease, gene-environment interaction, response to drugs
 - already being used to study malaria, age-related macular degeneration, type 2 diabetes, asthma, dyslexia, drug metabolism and adverse effects
- free global access through the internet



APBiotech - AstraZeneca - Aventis - Bayer - Bristol-Myers Squibb - F.Hoffman-La Roche - Glaxo Wellcome

THE SNP CONSORTIUM LTD

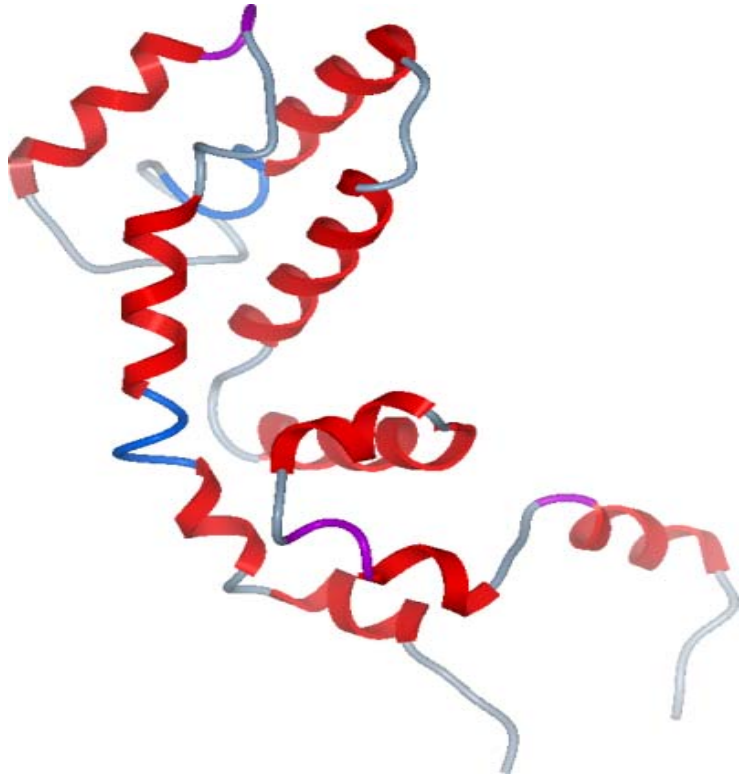
IBM - Motorola - Novartis - Pfizer - Searle - SmithKline Beecham - Wellcome Trust

International
HapMap
Project



PPPs

Structural Genomics Consortium

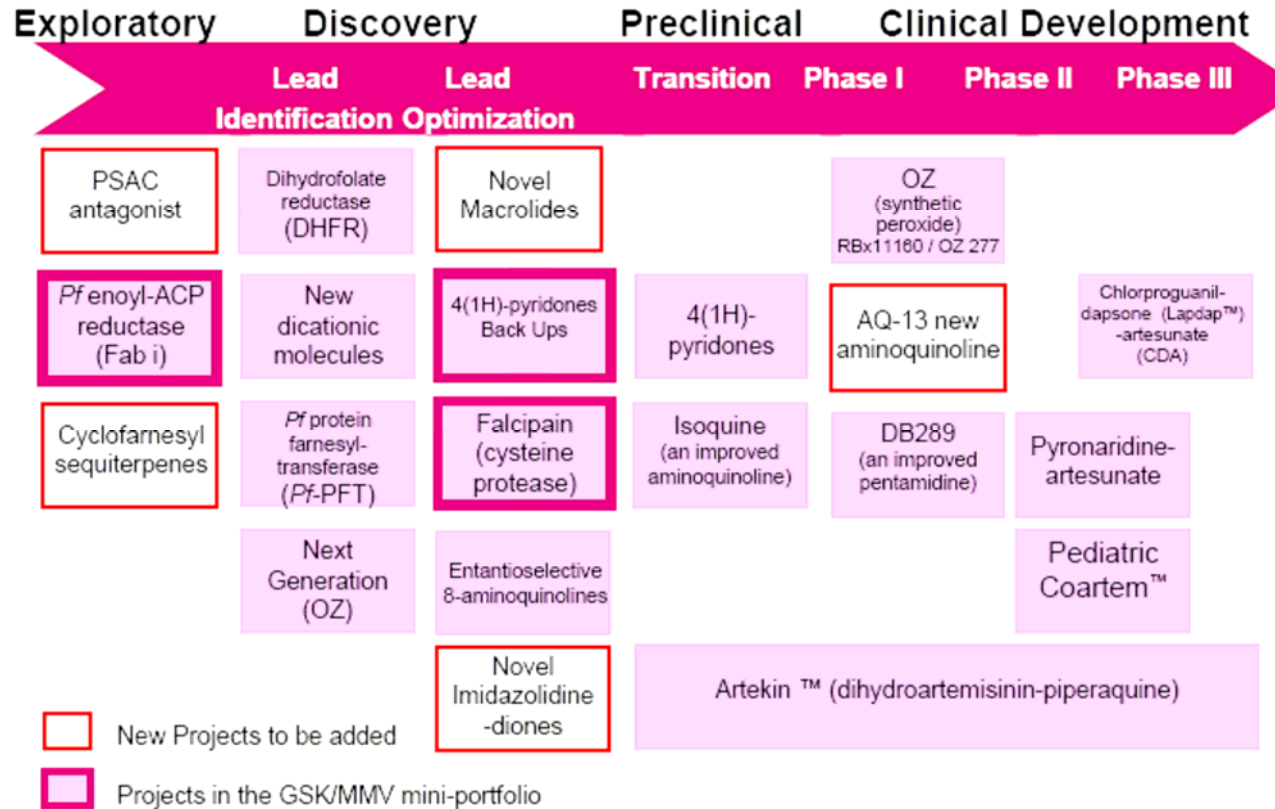
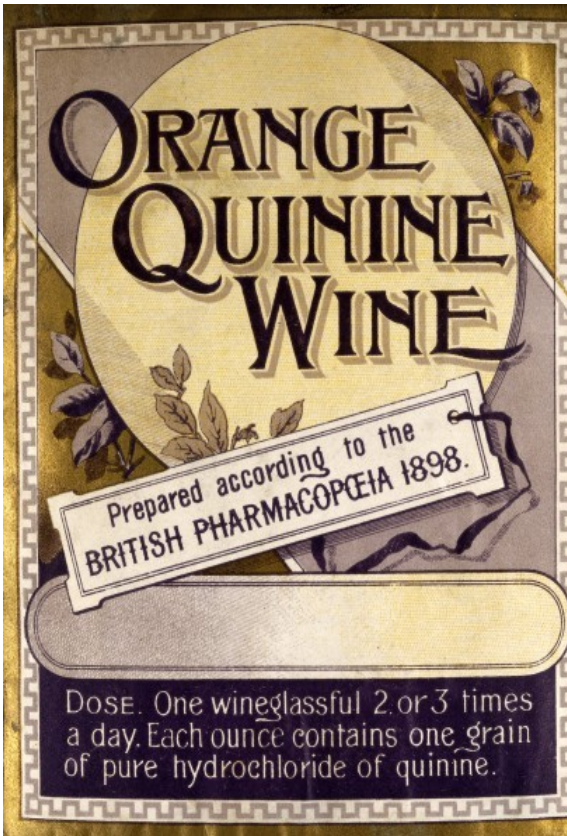


- £48 million consortium between UK, Canada and Sweden
- to determine structures of over 400 proteins relevant to human medicine
- find new drug targets for cancer, inflammation, osteoporosis and diabetes
- provide research tools to learn more about how protein structure relates to function



PPPs – unmet need

Medicines for Malaria Venture



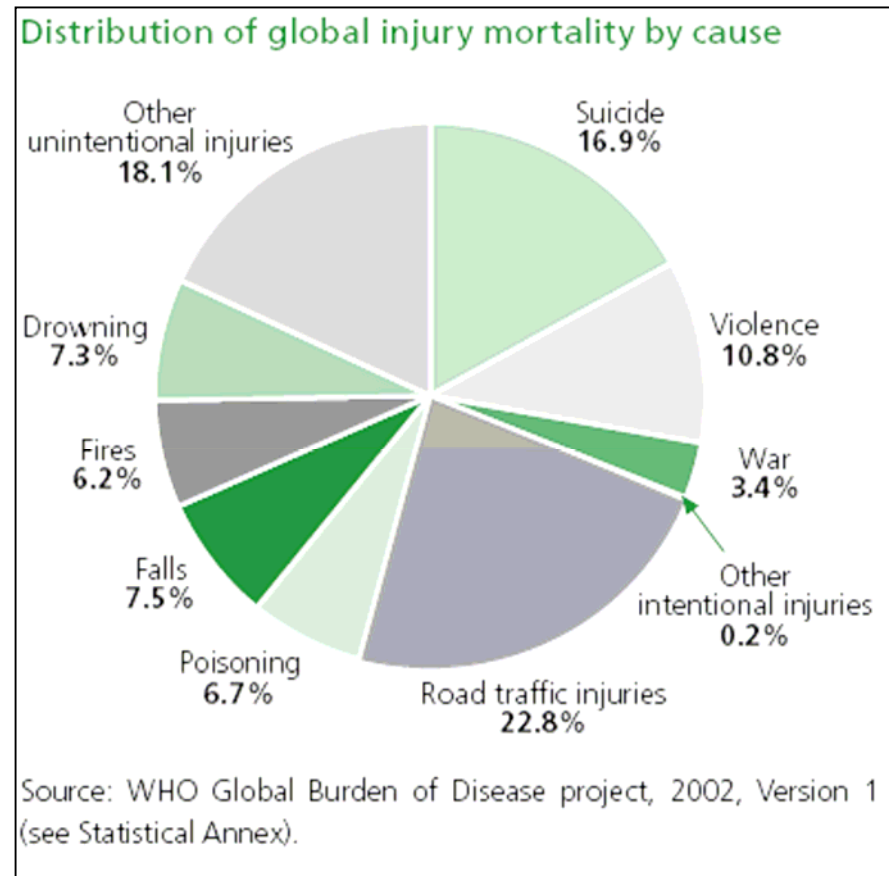
Curing Malaria Together



Medicines for Malaria Venture

International Collaborative Research Grants

- Traffic-Related Injury in the Pacific Project (TRIPP)
- estimation of the burden of injury in Pacific nations
- identification and quantification of major risk factors for motor vehicle injury
- inform the priorities for road traffic injury prevention interventions



A long term view

Major overseas programmes

Commitment to long-term support to carry out vital research on malaria and other diseases, which cause high levels of mortality in the tropics

Kenya Medical Research Institute
Kilifi/Nairobi
Kenya

Mahidol University, Thailand &
Hospital for Tropical Diseases,
Viet Nam

University of Malawi
Blantyre
Malawi

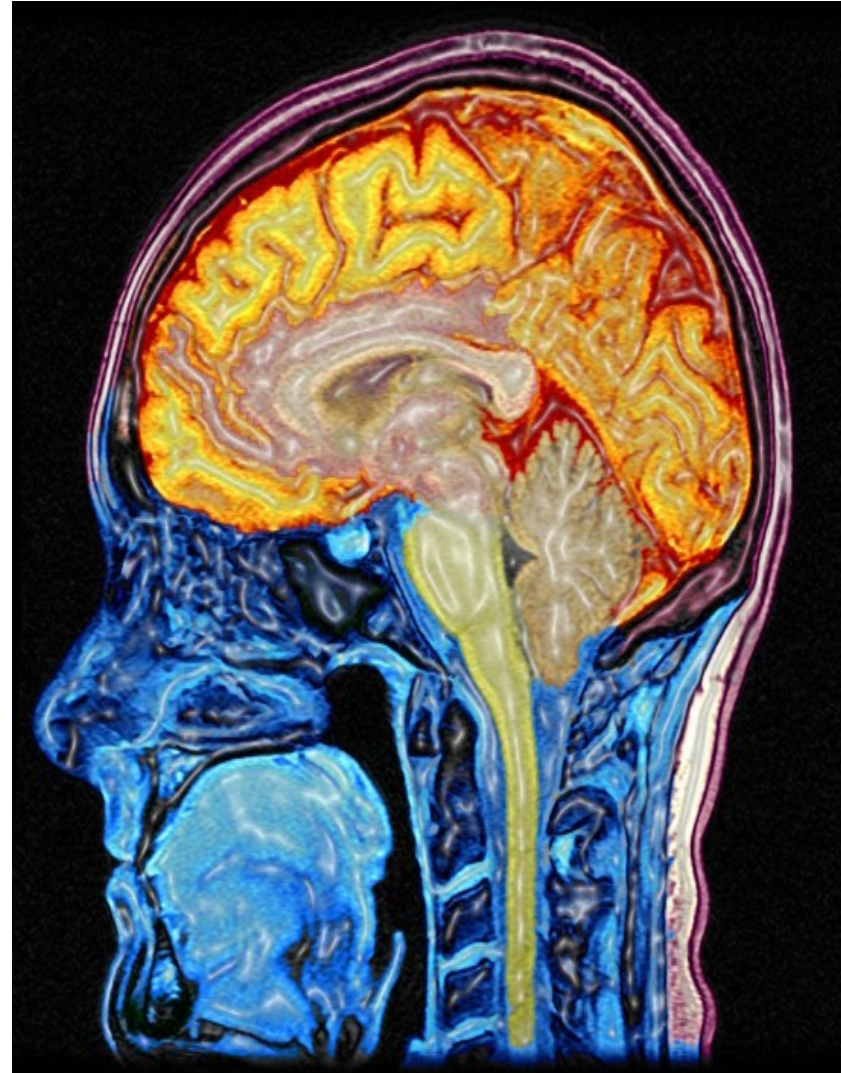


Advocacy

EU Physical Agents Directive

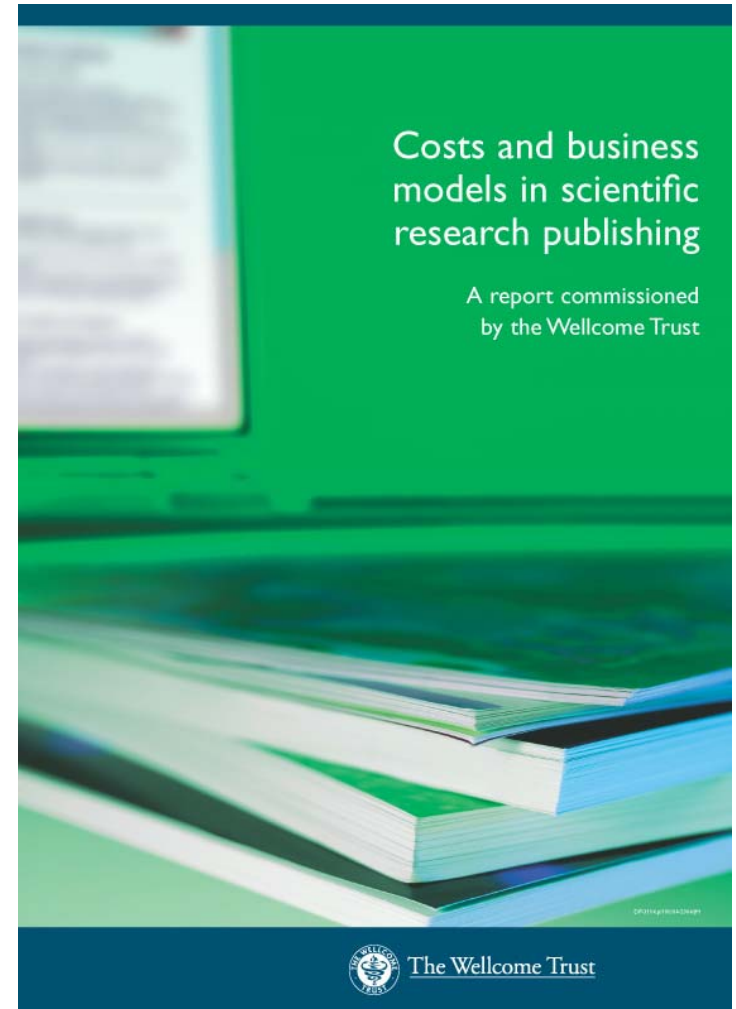
(electromagnetic forces)

- PAD (EMF) 2004/40/EC adopted by EU in April 2004
- April 2008 limits placed on the EMF exposure of workers
- could seriously limit the use of MRI for clinical and research purposes
- could prohibit interventional MRI and research with new, more powerful high-field scanners
- EU wide opposition



Open access

- partnership initiative with National Library of Medicine
 - to develop a PubMed Central portal in the UK that will create a stable, permanent digital archive of peer-reviewed biomedical research publications that is accessible for free via the Internet
 - in collaboration with DH, MRC, BBSRC, JISC, Cancer Research UK, British Heart Foundation, Arthritis Research Campaign, AMRC, Scottish Executive
 - mirror the data from USA, Japan, France – collaboration and competition
- UKPMC running and accepting papers by end of 2006



What foundations cannot do...

- substitute for Government
- enter into open-ended funding commitments
- work without financial commitment from other partners
- work without consent
- everything



Foundations – a challenge

“I believe that, after the first generation, inherited wealth loses the spirit and values of the people that earned that wealth.....The culture of those in charge becomes not too dissimilar from the culture of the government bureaucracies who dispense funds confiscated from the taxpayer.”

Joseph J Jacobs, The Compassionate Conservative (1996)

