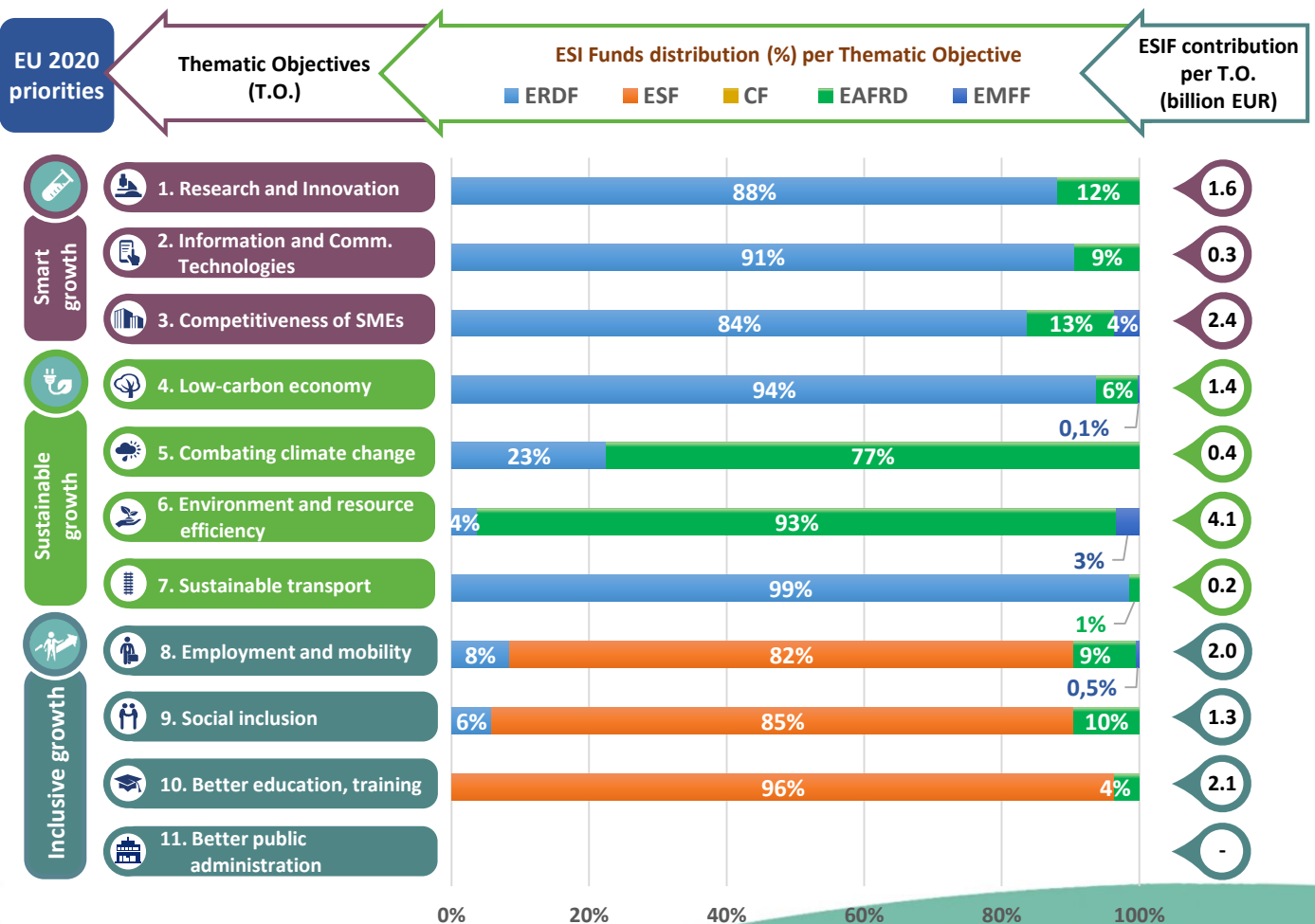
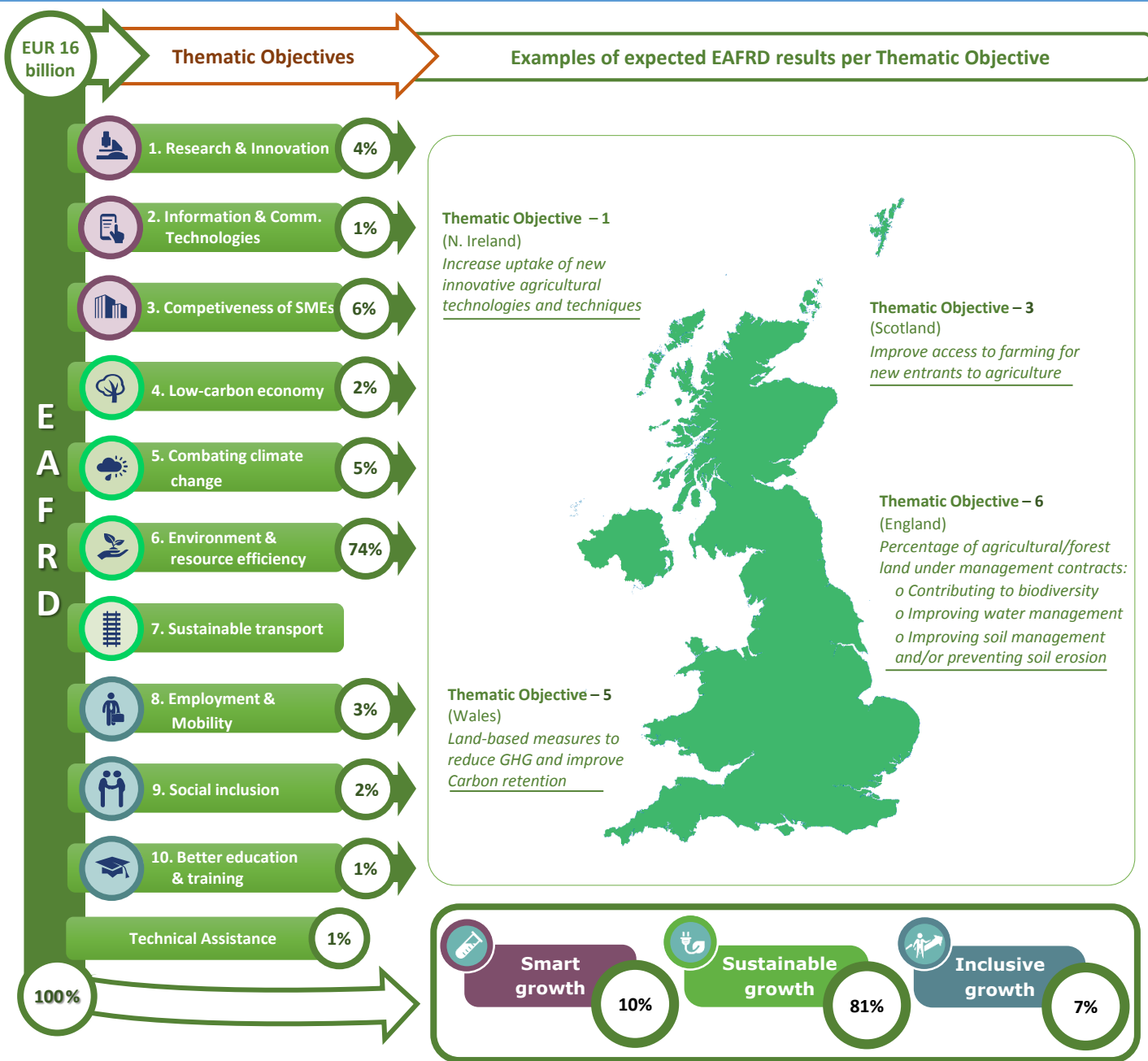


### Thematic objectives supported in the United Kingdom and ESIF contributions





## Integrated approaches to territorial development in rural areas

### Community Led Local Development (CLLD) / LEADER

**CLLD/LEADER funding in the UK:** Minimum 5% of the EAFRD budget for the United Kingdom.

**Multi-funded Local Development Strategies:** Yes, in Scotland including the EAFRD and the EMFF. The EAFRD will be assigned as lead fund.

#### Rural areas population limits derogations:

- England: upper limit possibly to 200 000 inhabitants and lower reduced below 10 000.
- N. Ireland: Possibly provide for a LAG of 4 500 inhabitants in the Belfast area

**Responsible body:** UK Government  
**Date of PA approval:** 29/10/2014

**Please note:** The data and figures presented in this summary come from the European Commission approved version of the PA for the United Kingdom. The information provided in this summary should not be considered a comprehensive account of the original PA content. For the full information please see the original document.

For more information please visit: [http://ec.europa.eu/contracts\\_grants/agreements/index\\_en.htm](http://ec.europa.eu/contracts_grants/agreements/index_en.htm)