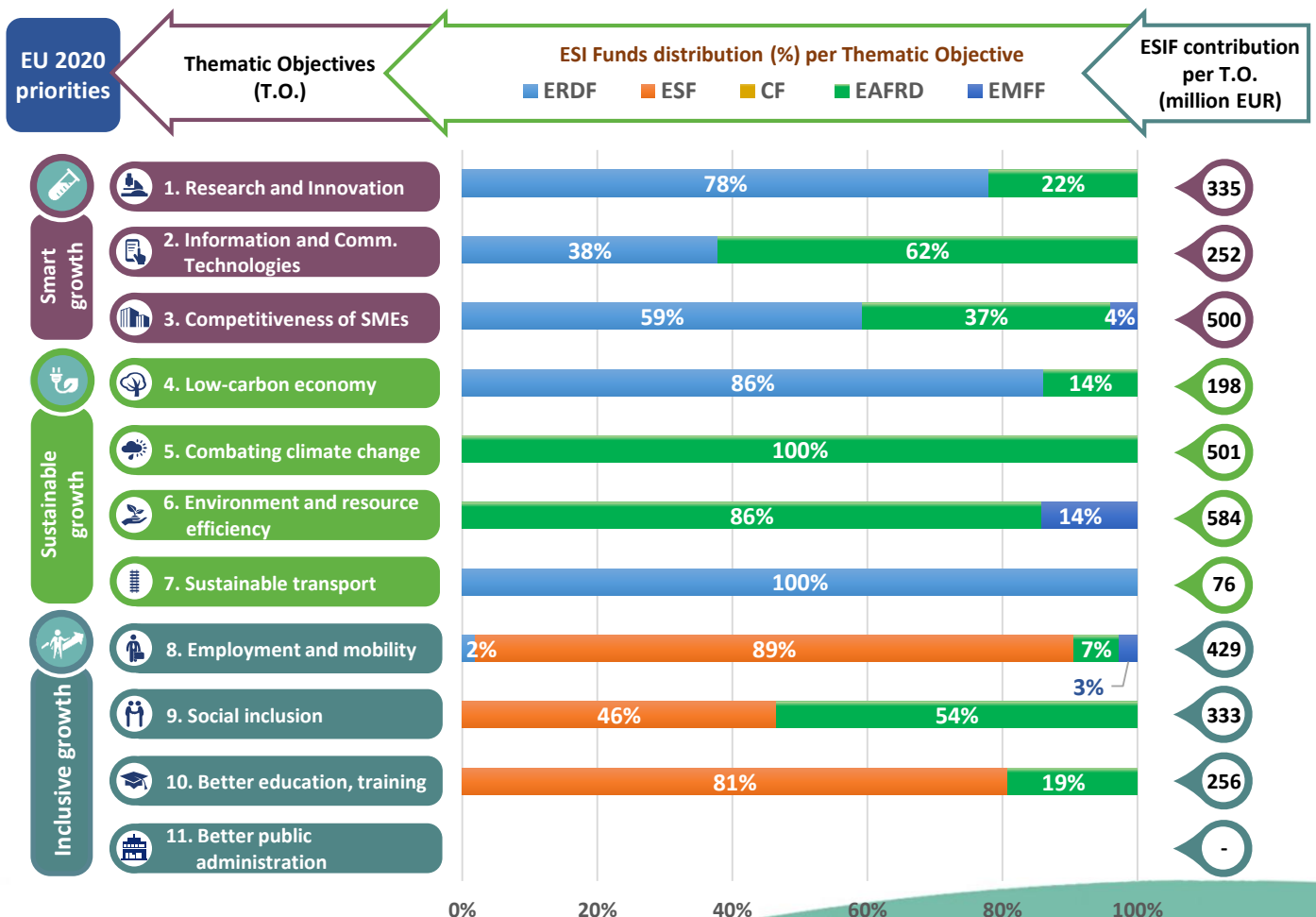
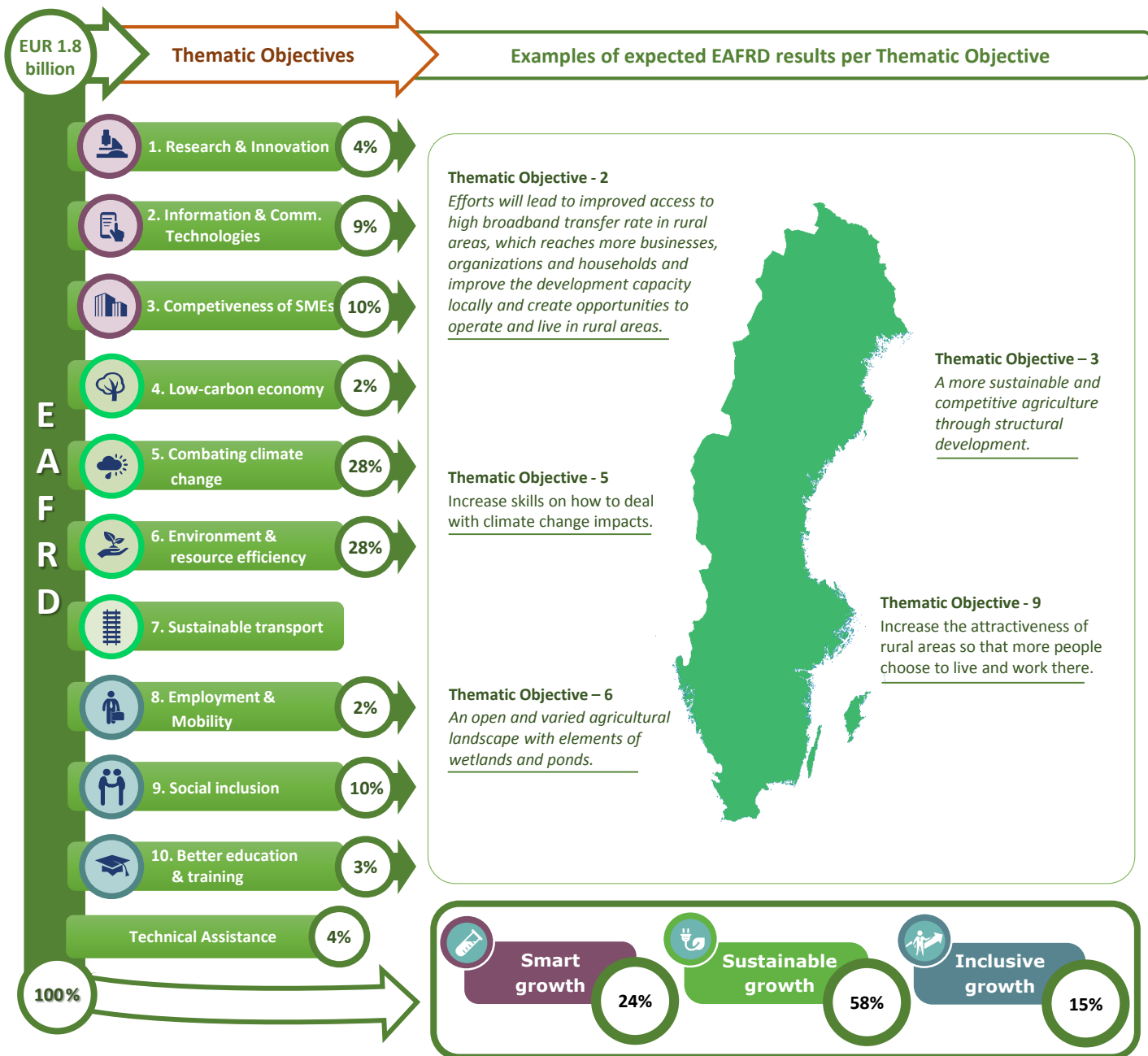


### Thematic objectives supported in Sweden and ESIF contributions



# EAFRD allocation per Thematic Objective & expected results



## Integrated approaches to territorial development in rural areas

### Community Led Local Development (CLLD) / LEADER

CLLD/LEADER funding in Sweden: EUR 200.2 million EAFRD

**Multi-funded Local Development Strategies:** Yes, local development groups can choose which measures and thus the funds they want to use to implement their local development strategy.

**Rural areas population limits derogations:** Between 10 000 and 150 000 inhabitants, but exceptions may be allowed up to 320 000.

<b>Responsible body:</b>	Ministry of Enterprise and Innovation & Ministry of Employment
<b>Date of PA approval:</b>	29/10/2014

**Please note:** The data and figures presented in this summary come from the European Commission approved version of the PA for Sweden. The information provided in this summary should not be considered a comprehensive account of the original PA content. For the full information please see the original document.

For more information please visit: [http://ec.europa.eu/contracts\\_grants/agreements/index\\_en.htm](http://ec.europa.eu/contracts_grants/agreements/index_en.htm)