

1. Introduction

Focus Area (FA) 6B is designed to foster local development in rural areas.

Two measures play a dominant role in this focus area:

- LEADER (M19)
- Basic services and village renewal

These are complemented by a small number of other measures, which are much less important in size, such as support for Cooperation and Areas with Natural Constraints.

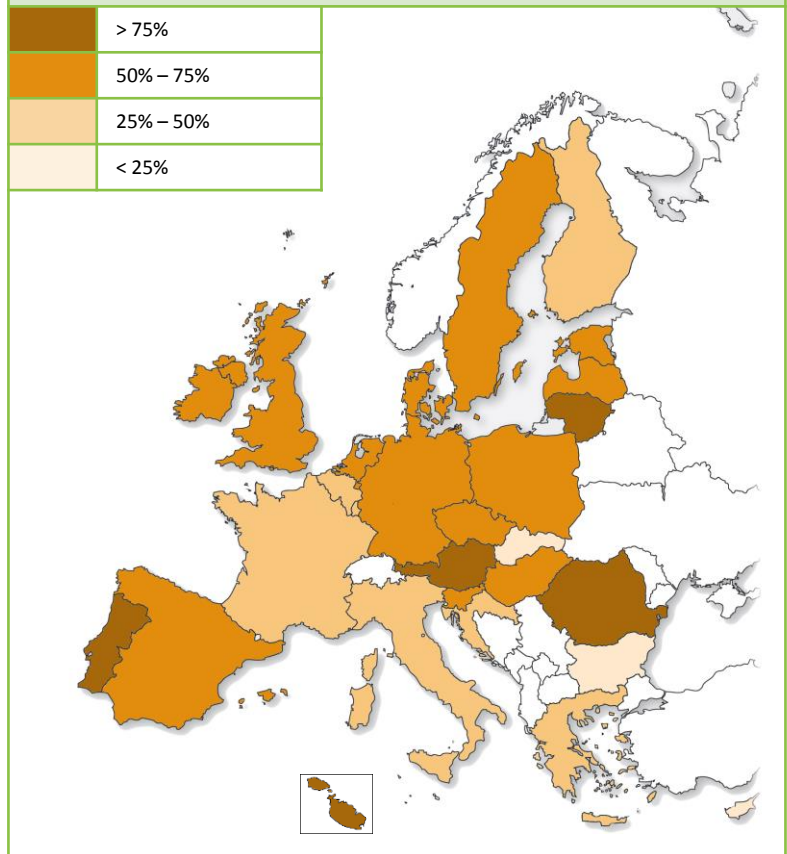
The targets are the creation of 44 500 jobs through the supported projects, to cover 54% of the rural population with Local Development Strategies (LDS), and to benefit 23 % of the rural population with improved services.

Rural Development Programmes addressing Focus Area 6B

110 out of 112 RDPs¹

Focus Area 6B TARGET – % of rural population covered by local development strategies^{1, 2}

	> 75%
	50% – 75%
	25% – 50%
	< 25%



Examples of expected achievement (EU-28)²



54 % of rural population covered by local development strategies (LDS)



23 % of the rural population benefiting from improved services



44 500 jobs created in supported projects



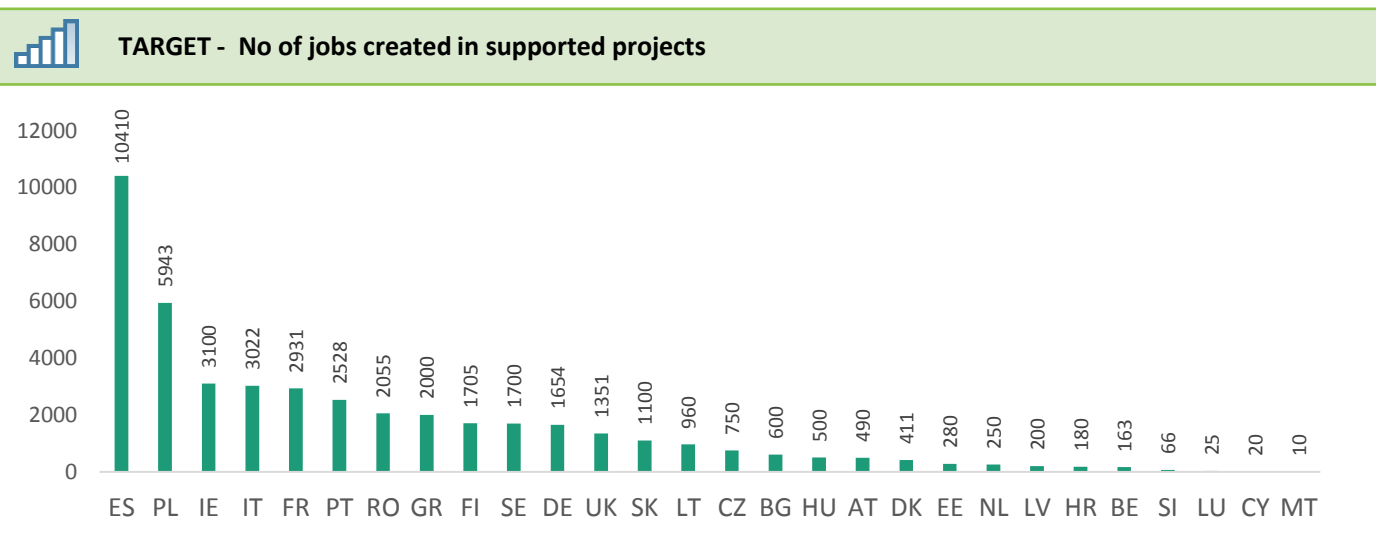
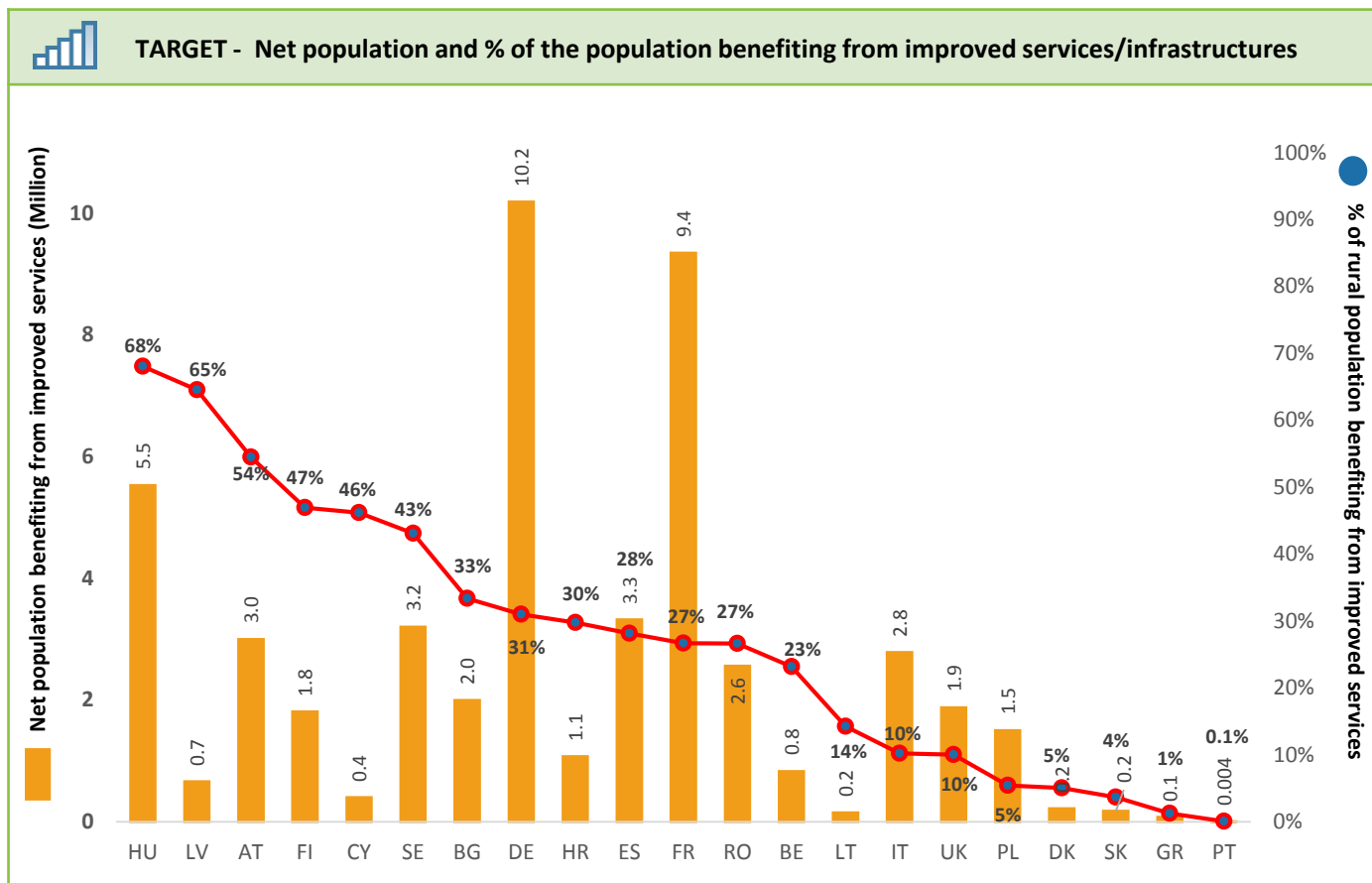
11 % of the planned total public expenditure is allocated to Focus Area 6B

¹ RDPs that do not address FA 6B: FR-National Programme, IT-National Programme.

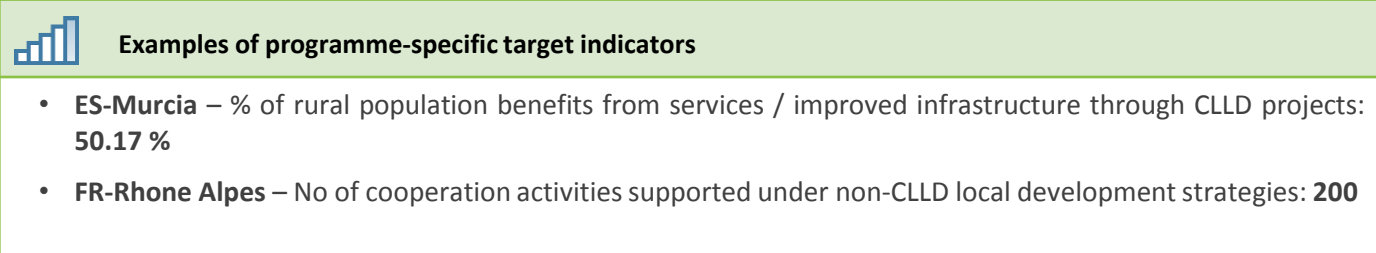
² Target values in percentage are calculated on the basis of the total rural population covered by the RDPs that activated Focus Area 6B.

2. Expected achievements

This section provides information on the common target indicator defined for the Focus Area and examples of programme-specific target indicators defined by some RDPs to complement the common targets indicators. Target values in percentage are calculated on the basis of the total rural population covered by the RDPs that activated Focus Area 6B.




In addition to the common targets set at EU level, Member States may set programme specific targets which reflect their particular circumstances. Some examples of these indicators are provided below.

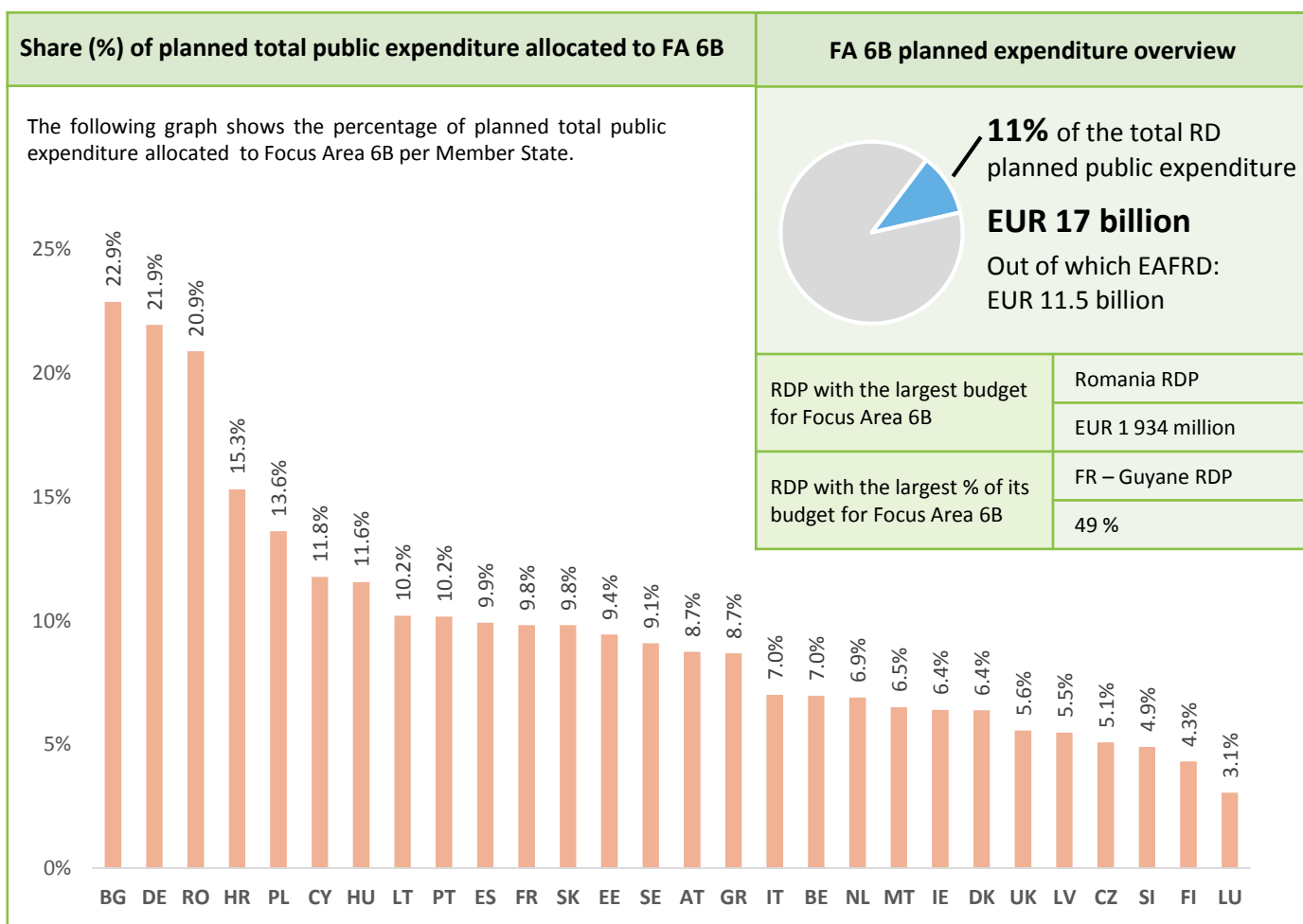


2. Expected achievements

This section provides information on the output indicator. Data provided is aggregated at EU level for those RDPs setting the indicator.

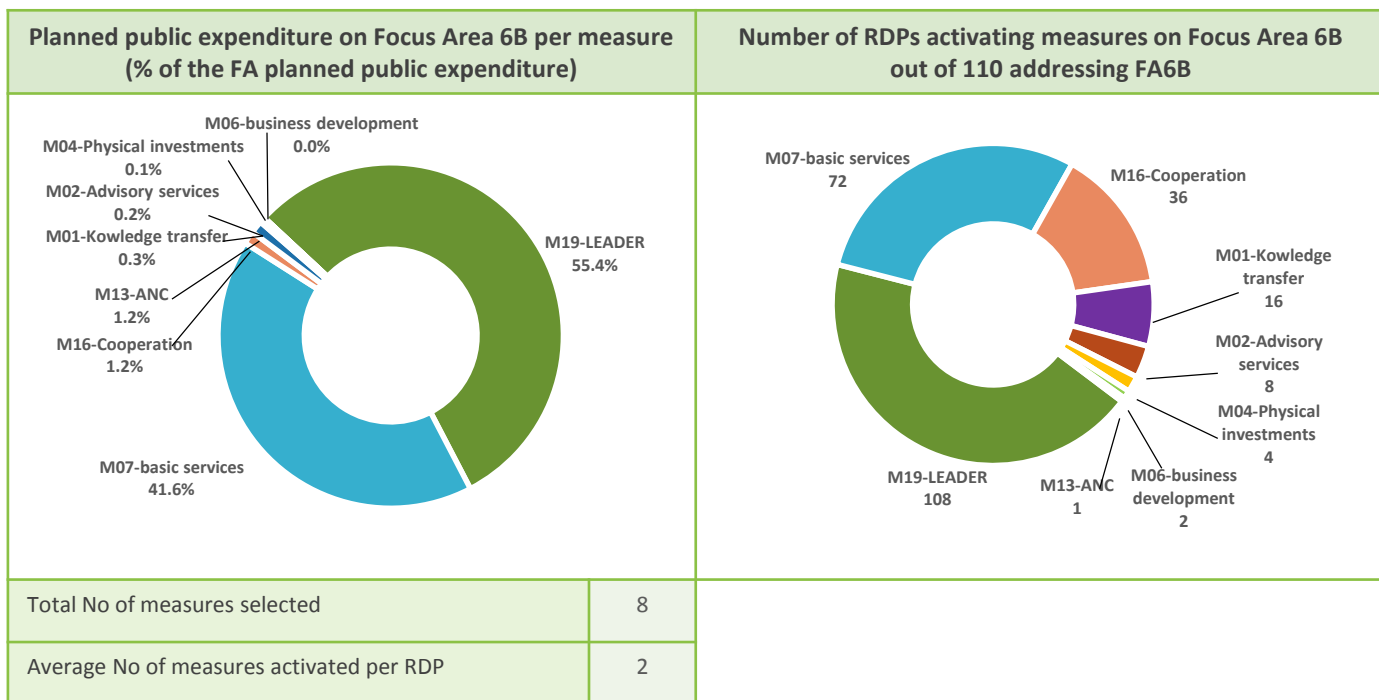
 Main output indicators	EU Total
No of beneficiaries trained	93 996
No of Local Action Groups selected	2 515
No of operations supported for investments of small scale infrastructure, including investments in renewable energy and energy saving	28 456
No of operations supported for investments in local basic services for the rural population	12 503
No of operations supported for studies/investments in rural cultural and natural heritage, including High Nature Value sites	9 604

3. Planned total public expenditure on Focus Area 6B



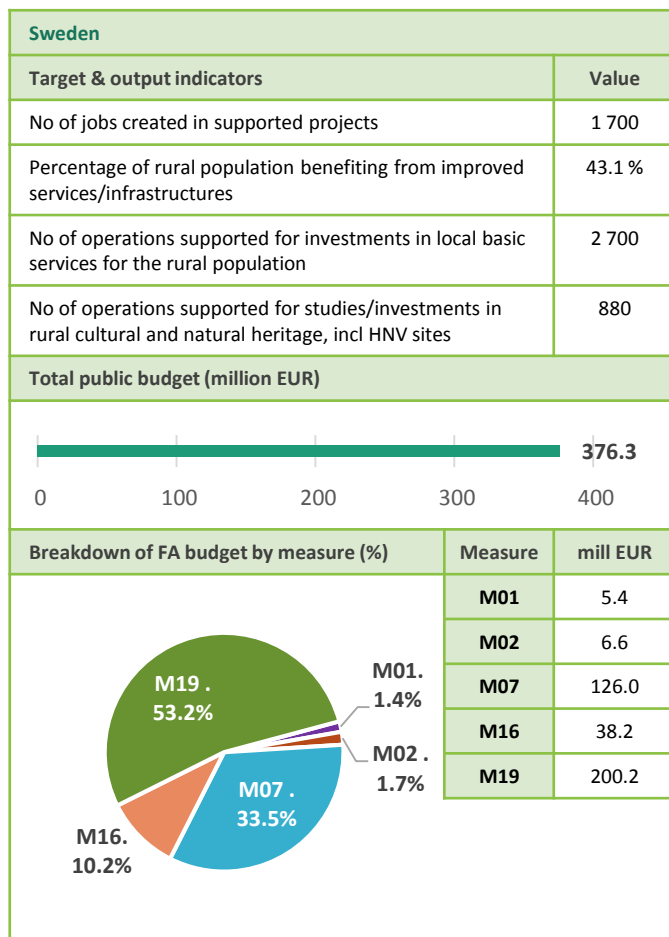
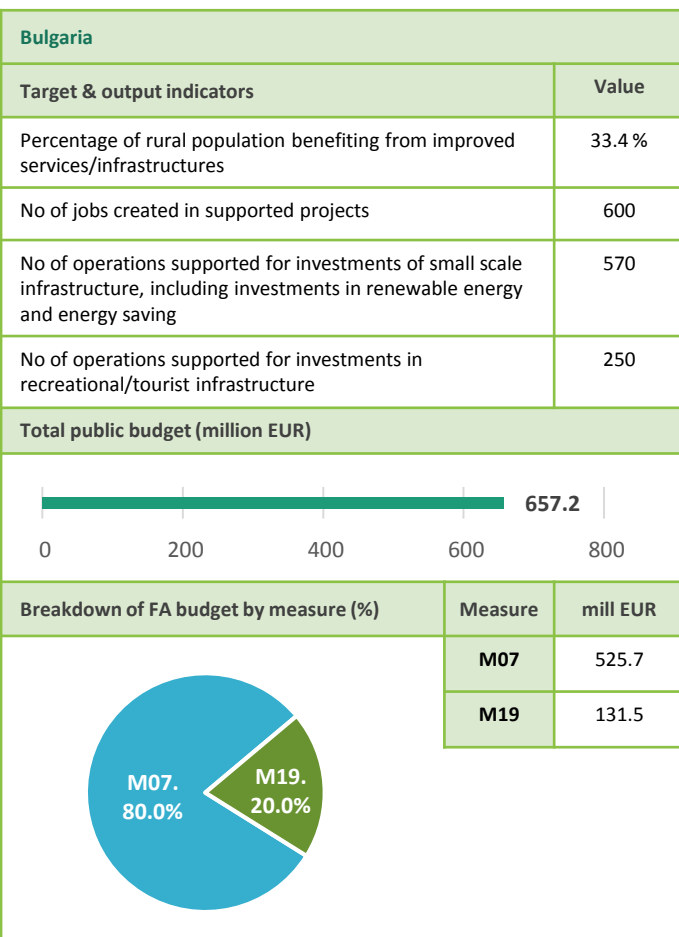
4. Intervention logic at EU level

In 2014-2020, measures within Rural Development Programmes can contribute to several Priorities and Focus Areas in a flexible manner. The following charts provide an indication of the most commonly used measures to address Focus Area 6B, as well as an indication of the number of RDPs in which these measures are selected.



5. Example of RDPs' intervention logic

This section provides two examples of the intervention logic followed by RDPs which illustrate alternative approaches fostering local development.



6. Measure mix per Member State

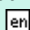
The following table shows the weight that each Member State has given to the various measures available in order to achieve the targets set for this Focus Area. Highlighted cells indicate the highest budget share allocation per MS. The last row presents the EU-28 planned total public expenditure for each measure (million EUR).

 = Highest budget share allocation per MS

	M01 - Knowledge transfer & information actions	M02 - Advisory services	M04 - Investments in physical assets	M06 – Farm & business development	M07- Basic Services	M13 – ANC	M16 - Cooperation	M19 - LEADER	Total	Planned expenditure (million EUR)
AT					63%		0.05%	37%	100 %	663
BE					32%		8%	59%	100 %	108
BG					80%			20%	100 %	657
CY					54%			46%	100%	27
CZ								100%	100%	154
DE					52%		2%	47%	100 %	3 637
DK								100%	100 %	55
EE								100%	100 %	90
ES	0.1%	0.2%			12%		1%	87%	100 %	1 275
FI	0.3%				14%		1%	85%	100 %	356
FR			0.1%	0.2%	37%		2%	60%	100 %	1 641
GR			3%		8%			89%	100 %	497
HR					80%			20%	100%	333
HU					59%			41%	100 %	471
IE								100%	100 %	250
IT	0.5%	0.2%			14%		2%	84%	100 %	1 427
LT					39%			61%	100%	186
LU								100%	100 %	11
LV								100%	100 %	79
MT							20%	80%	100 %	8
NL								100%	100 %	111
PL					58%			42%	100 %	1 735
PT	0.3%				1%	43%	1%	55%	100 %	469
RO					67%			33%	100%	1 934
SE	1%	2%			34%		10%	53%	100%	376
SI								100%	100%	52
SK					47%			53%	100%	198
UK	7%	3%			26%		5%	59%	100 %	417
EU-28 (%)	0.3%	0.2%	0.1%	0.02%	42%	1%	1%	55%	100 %	17 216
EU-28 (mil. EUR)	46	27	15	3	7 170	203	210	9 541	-	

7. Additional information

Rural Development Regulation 2014-2020

Regulation (EU) N° 1305/2013 of the European Parliament and of the Council on support for rural development by the European Agricultural Fund for Rural Development (EAFRD) [PDF ]

RDP Summaries

Developed by the ENRD, these summarise the relevant information of all the RDPs approved [\[here\]](#)

Priority Summary

Developed by the ENRD, these summarise the relevant information of all Priorities [\[here\]](#)

Source of information: All data presented in this summary comes from the European Commission-approved 2014-2020 Rural Development Programmes (118 RDPs in total). In this fiche, public expenditure means total public expenditure (= EAFRD + Member States matching funds + any national top-ups). Due to rounding, there may be small discrepancies between some figures presented. Data includes programme modifications until March 2016. Out of the 118 Rural Development Programmes only the 112 national and regional Programmes have been considered because National Frameworks and National Rural Network Programmes do not allocate budget on Measures. Please note that data and calculations provided do not include M20 (Technical Assistance), or M18 (Complementary payments to Croatia). Icons source: www.flaticon.com

Disclaimer: This document aims to provide an accessible summary of the Rural Development Priority information covering all EU-28 RDPs. The information provided should not be considered a comprehensive account of the original RDP content.

Summary version: Version 1 (Based on SFC data March 2016)

Last updated: March 2016



The European Network for
Rural Development

ENRD Contact Point

Rue de la Loi, 38 Boîte n.4 - 1040

Brussels, Belgium

Tel. +32 2 801 38 00

email: info@enrd.eu

website: <http://enrd.ec.europa.eu/>

