

1. Introduction

Focus Area (FA) 5D is designed to support actions that contribute to the reduction of greenhouse gas and ammonia emissions from the agricultural sector.

Various measures can be activated to contribute to these objectives, from hard physical investments to reduce emissions to support for more environmentally friendly farming practices through Agri-environment-climate measures and organic farming. These investments can be complemented by measures for knowledge transfer, business development and cooperation.

The target is to mobilise 2 billion EUR of public expenditure to target 7.7% of the EU agricultural land in reducing GHG and/or ammonia emissions.

Rural Development
Programmes addressing
Focus Area 5D

54 out of 112 RDPs¹

Examples of expected achievement (EU-28)²



5.2 mill hectares of EU agricultural land targeting reduction of GHG and/or ammonia emissions



7.7 % of EU agricultural land targeting reduction of GHG and/or ammonia emissions



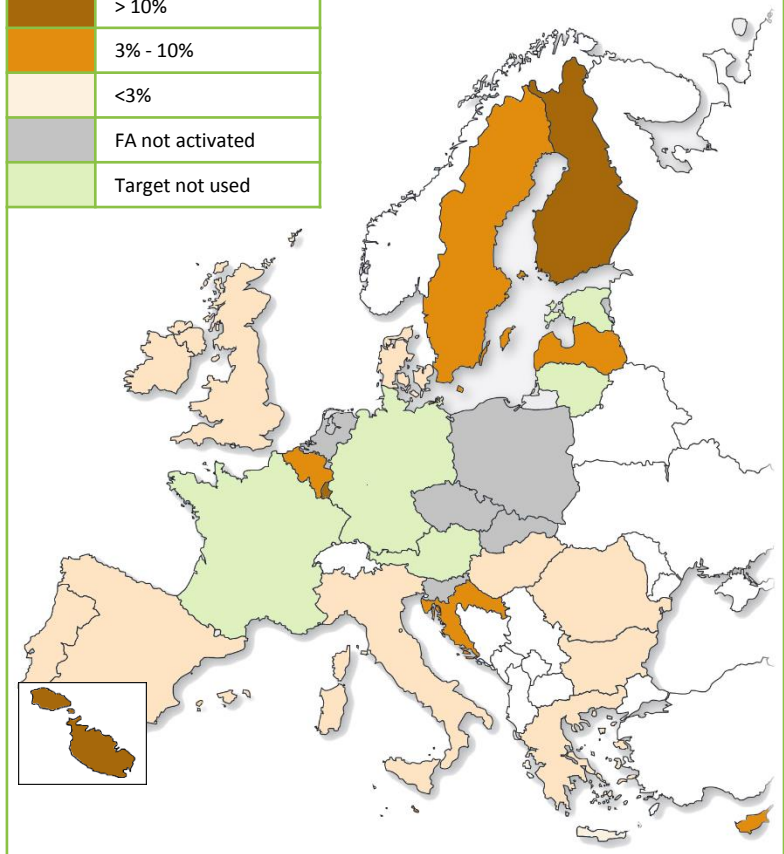
2 % of EU Livestock Units concerned by investments in view of reducing GHG and/or ammonia emissions



920 000 Livestock Units concerned by investments in view of reducing GHG and/or ammonia emissions

Focus Area 5D TARGET – % of LU concerned by investments in live-stock management in view of reducing GHG and/or ammonia emissions^{1, 2}

> 10%
3% - 10%
<3%
FA not activated
Target not used

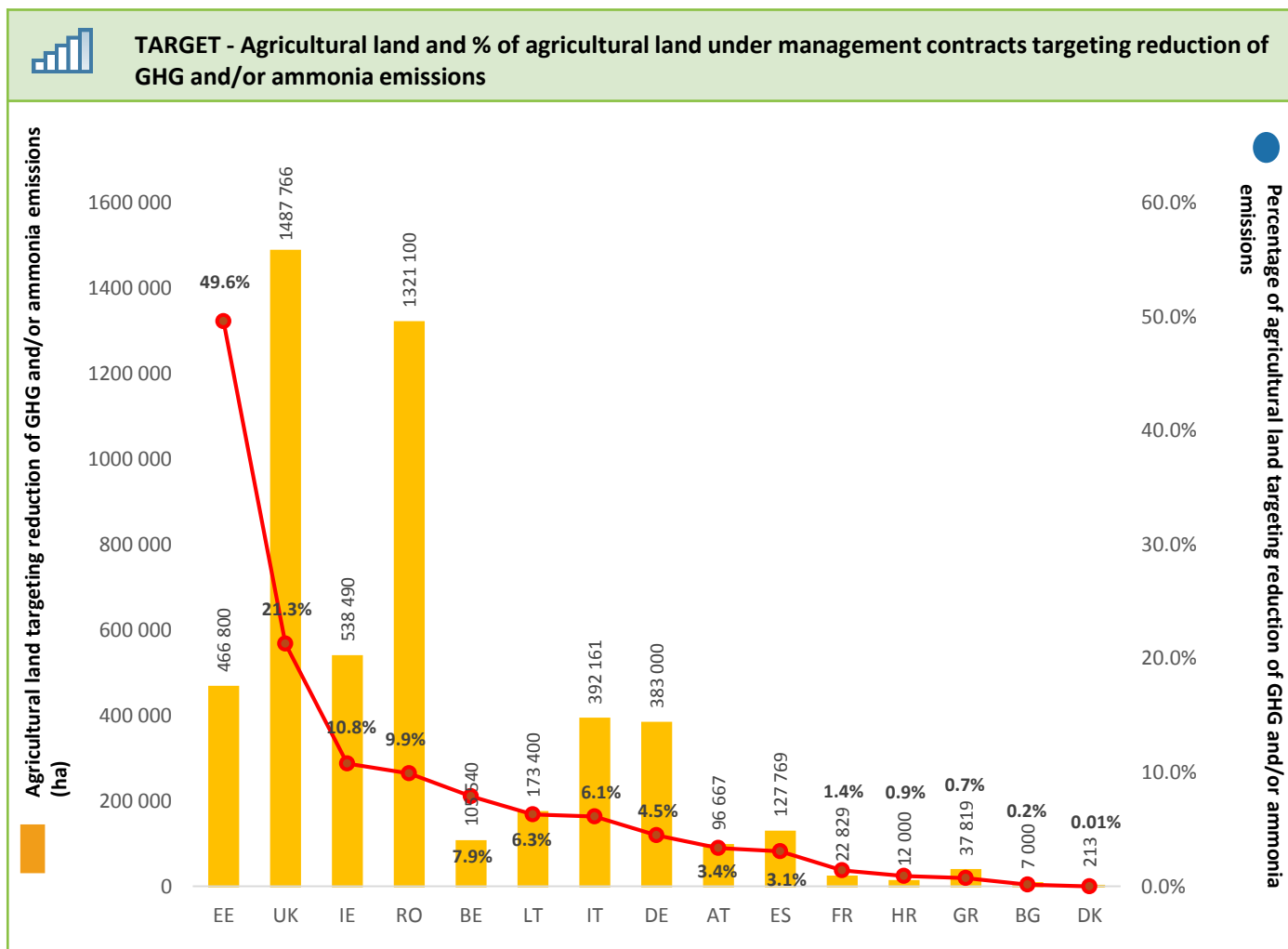


¹ RDPs that do not address FA 5D: BE (1 out of 2), CZ, DE (7 out of 13), ES (8 out of 18), FI (1 out of 2), FR (23 out of 28), IT (10 out of 22), NL, PL, PT (2 out of 3), SI, SK, UK (1 out of 4).

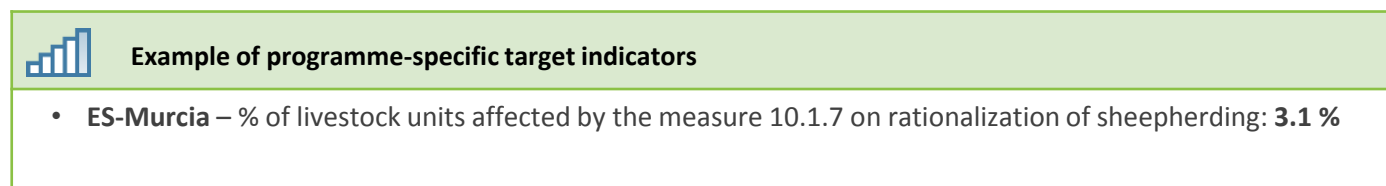
² Target values in percentage are calculated on the basis of the total livestock units and agricultural land covered by the RDPs that activated Focus Area 5D.

2. Expected achievements

This section provides information on the common target indicator defined for the Focus Area and examples of programme-specific target indicators defined by some RDPs to complement the common targets indicators. Target values in percentage are calculated on the basis of the total agricultural land covered by the RDPs that activated Focus Area 5D.




In addition to the common targets set at EU level, Member States may set programme specific targets which reflect their particular circumstances. An example of these indicators is provided below.

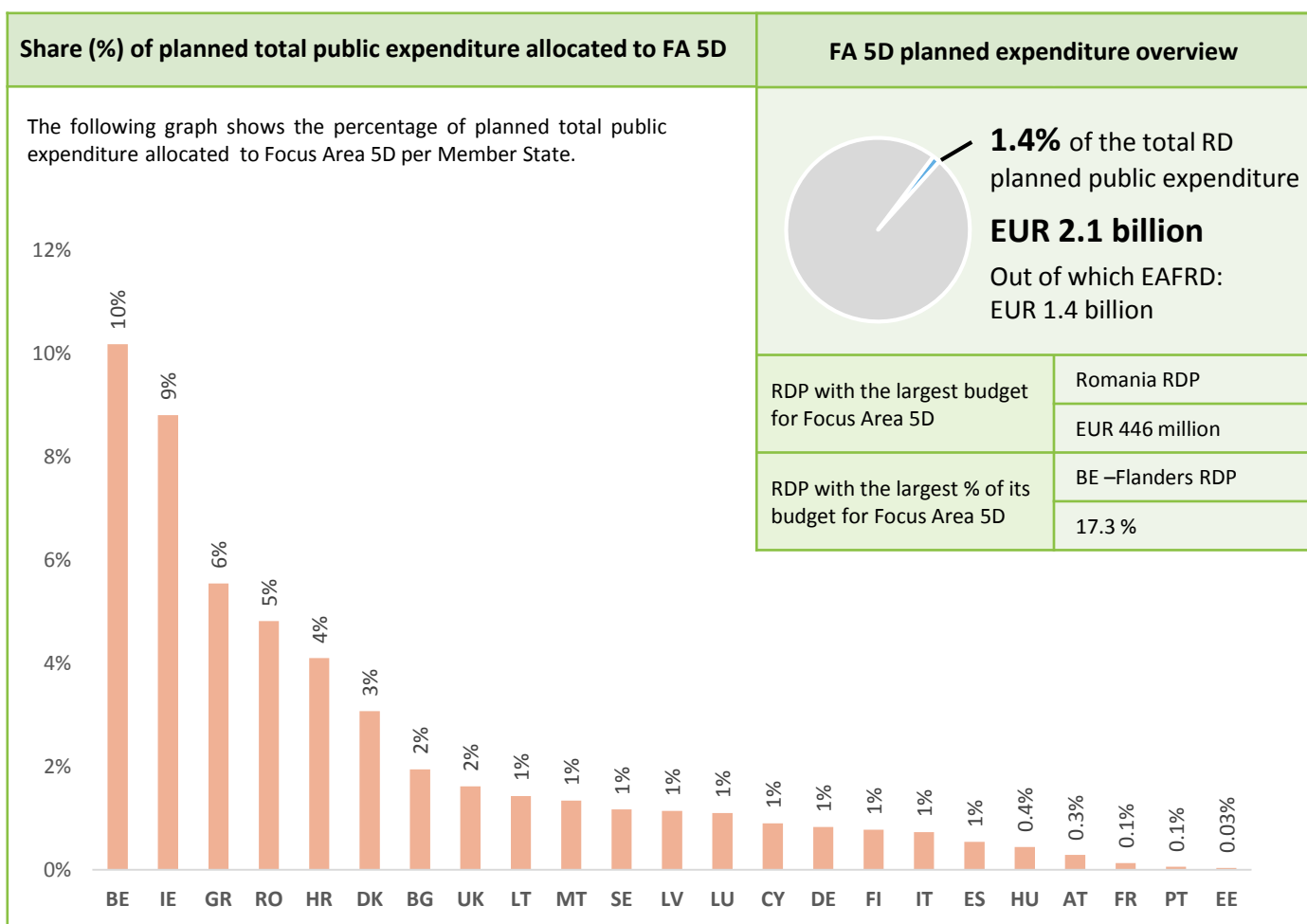


2. Expected achievements

This section provides information on the output indicator. Data provided is aggregated at EU level for those RDPs setting the indicator.

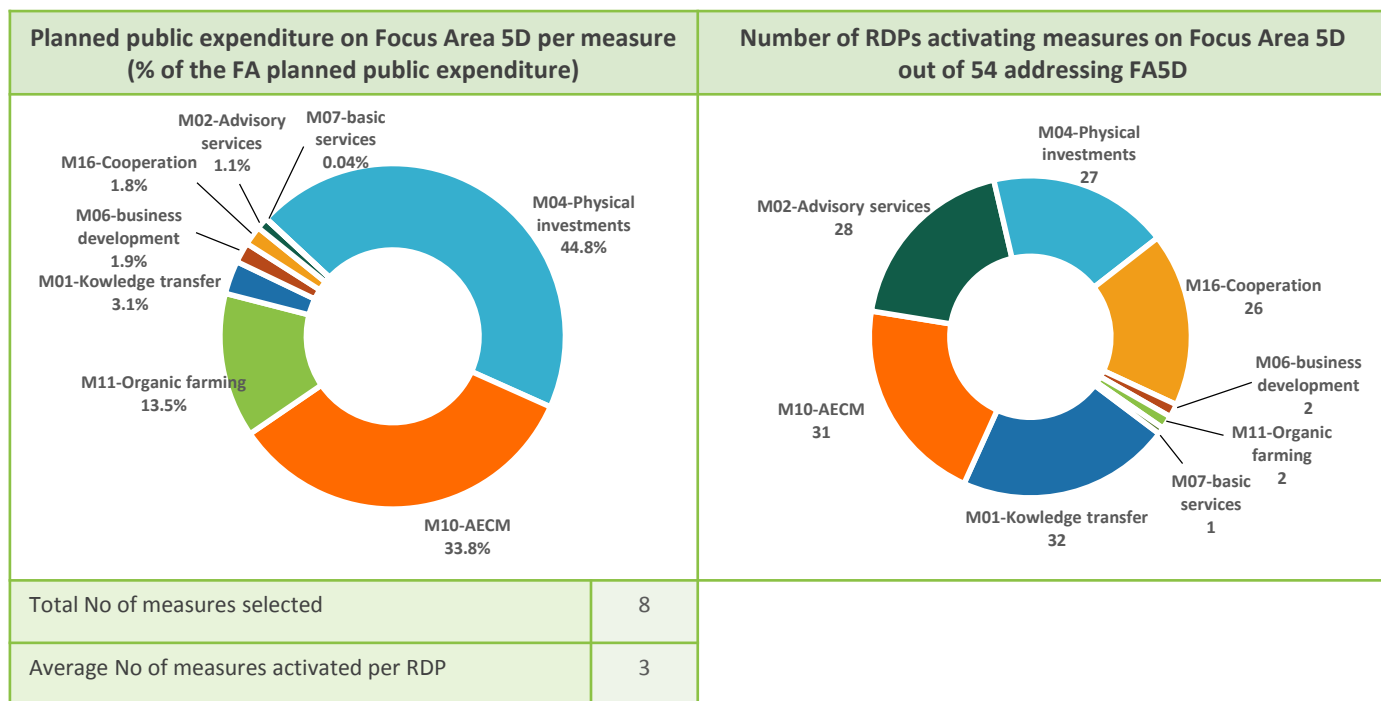
 Main output indicators	EU Total
Area (ha) under agro-environment climate contracts (e.g. green cover, catch crop, reduced fertilisation, extensification...)	1.6 mill ha
Area (ha) converted to organic farming	168 356
No of beneficiaries trained	60 183
No of operations supported for investments (e.g. manure storage, manure treatment)	14 543

3. Planned total public expenditure on Focus Area 5D



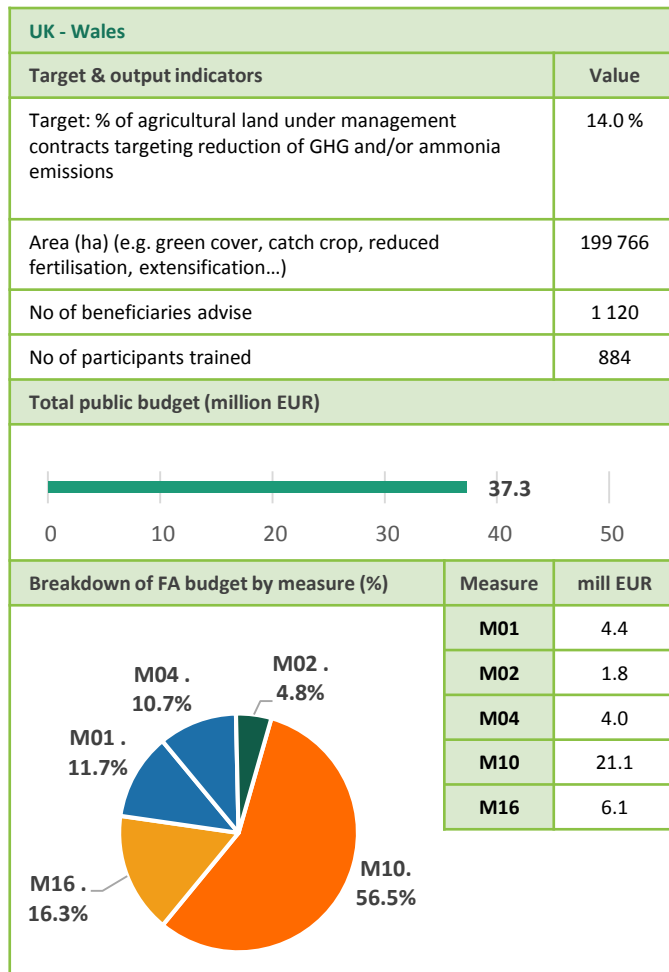
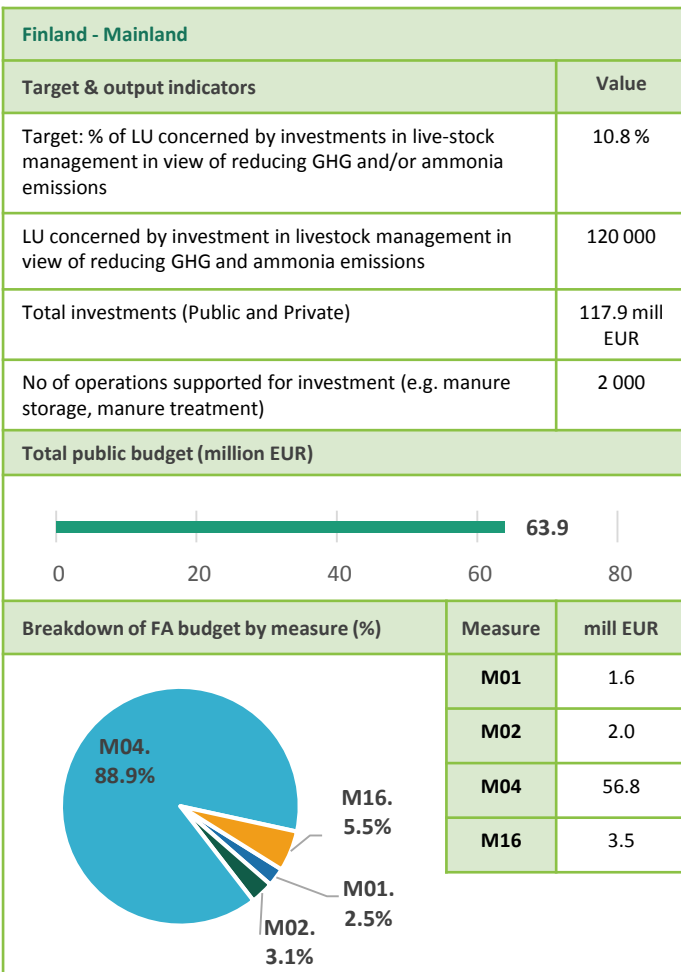
4. Intervention logic at EU level

In 2014-2020, measures within Rural Development Programmes can contribute to several Priorities and Focus Areas in a flexible manner. The following charts provide an indication of the most commonly used measures to address Focus Area 5D, as well as an indication of the number of RDPs in which these measures are selected.



5. Example of RDPs' intervention logic

This section provides two examples of the intervention logic followed by RDPs which illustrate alternative approaches to addressing the objective on the reduction of GHG and ammonia emissions.



6. Measure mix per Member State

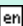
The following table shows the weight that each Member State has given to the various measures available in order to achieve the targets set for this Focus Area. Highlighted cells indicate the highest budget share allocation per MS. The last row presents the EU-28 planned total public expenditure for each measure (million EUR).

 = Highest budget share allocation per MS

	M01 - Knowledge transfer & information actions	M02 - Advisory services	M04 - Investments in physical assets	M06 – Farm & business development	M07 – Basic services & village renewal	M10-AECM	M11 – Organic Farming	M16 - Cooperation	Total	Planned expenditure (million EUR)
AT	3%	2%				92%		3%	100 %	22
BE			83%			17%			100 %	158
BG	7%	1%	77%			14%		2%	100 %	56
CY	2%		98%						100%	2
CZ										
DE	1%	0.3%	8%			91%		0.4%	100 %	137
DK			98%			2%			100 %	26
EE	97%	3%							100 %	0.3
ES	3%	3%	63%			13%	12%	7%	100 %	69
FI	3%	3%	89%					6%	100 %	64
FR	2%	0.5%		36%	5%	58%			100 %	21
GR		1%	0.4%			9%	89%	1%	100 %	317
HR			89%			11%			100%	89
HU			100%						100 %	18
IE	11%	0.2%	1%			87%		0.3%	100%	344
IT	6%	7%	25%			55%		8%	100 %	148
LT	3%	1%				90%		6%	100%	26
LU			100%						100%	4
LV			100%						100 %	16
MT	17%	21%	63%						100 %	2
NL										
PL										
PT			13%			87%			100 %	3
RO	1%		99%						100%	446
SE			20%	69%				12%	100%	48
SI										
SK										
UK	4%	3%	26%			62%		5%	100 %	121
EU-28 (%)	3%	1%	45%	2%	0.04%	34%	14%	2%	100 %	2 139
EU-28 (mil. EUR)	67	23	957	41	1	722	290	38	-	

7. Additional information

Rural Development Regulation 2014-2020

Regulation (EU) N° 1305/2013 of the European Parliament and of the Council on support for rural development by the European Agricultural Fund for Rural Development (EAFRD) [PDF ]

RDP Summaries

Developed by the ENRD, these summarise the relevant information of all the RDPs approved [\[here\]](#)

Priority Summary

Developed by the ENRD, these summarise the relevant information of all Priorities [\[here\]](#)

Source of information: All data presented in this summary comes from the European Commission-approved 2014-2020 Rural Development Programmes (118 RDPs in total). In this fiche, public expenditure means total public expenditure (= EAFRD + Member States matching funds + any national top-ups). Due to rounding, there may be small discrepancies between some figures presented. Data includes programme modifications until March 2016. Out of the 118 Rural Development Programmes only the 112 national and regional Programmes have been considered because National Frameworks and National Rural Network Programmes do not allocate budget on Measures. Please note that data and calculations provided do not include M20 (Technical Assistance), or M18 (Complementary payments to Croatia). Icons source: www.flaticon.com

Disclaimer: This document aims to provide an accessible summary of the Rural Development Priority information covering all EU-28 RDPs. The information provided should not be considered a comprehensive account of the original RDP content.

Summary version: Version 1 (Based on SFC data March 2016)

Last updated: March 2016



The European Network for
Rural Development

ENRD Contact Point

Rue de la Loi, 38 Boîte n.4 - 1040

Brussels, Belgium

Tel. +32 2 801 38 00

email: info@enrd.eu

website: <http://enrd.ec.europa.eu/>

