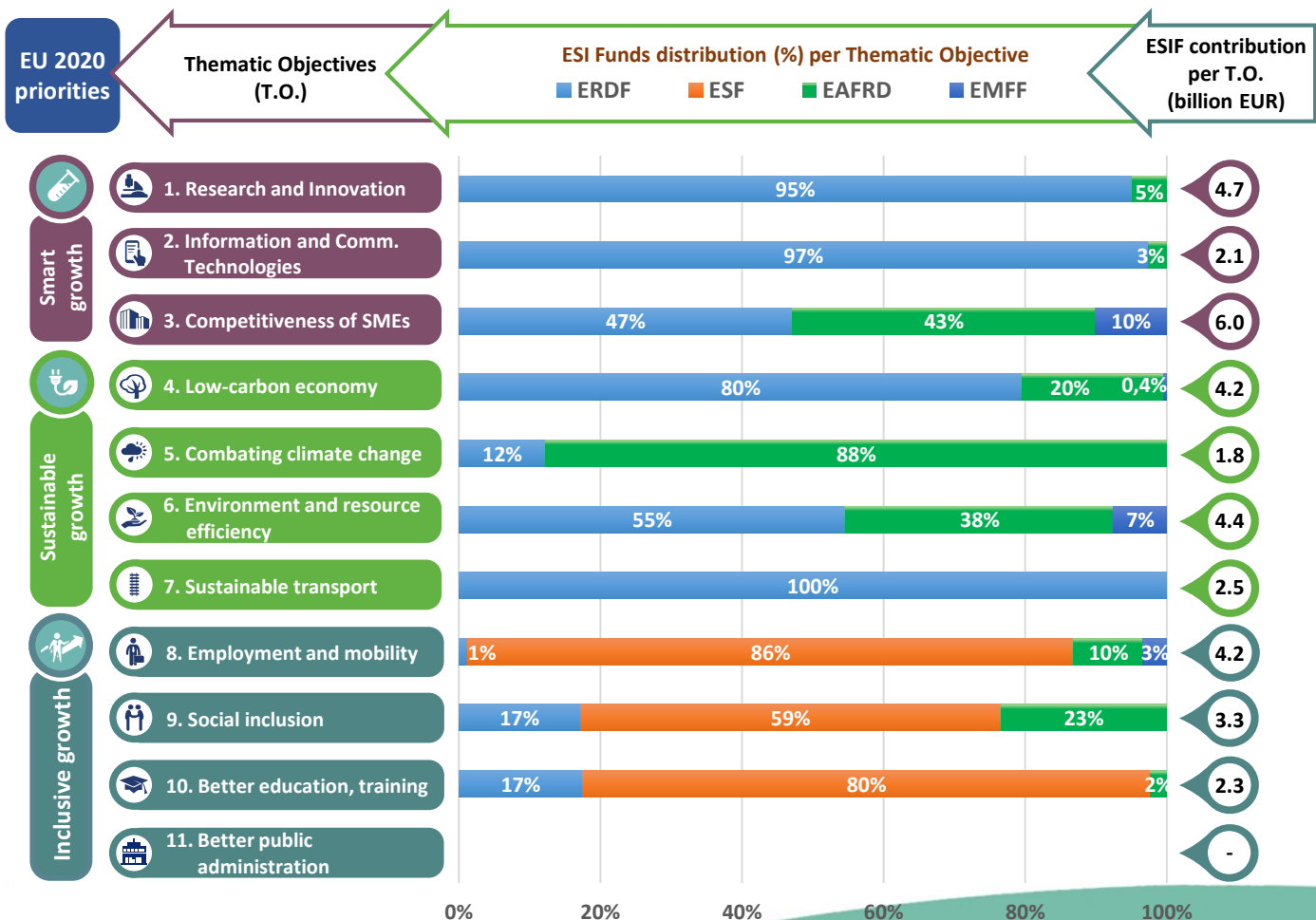
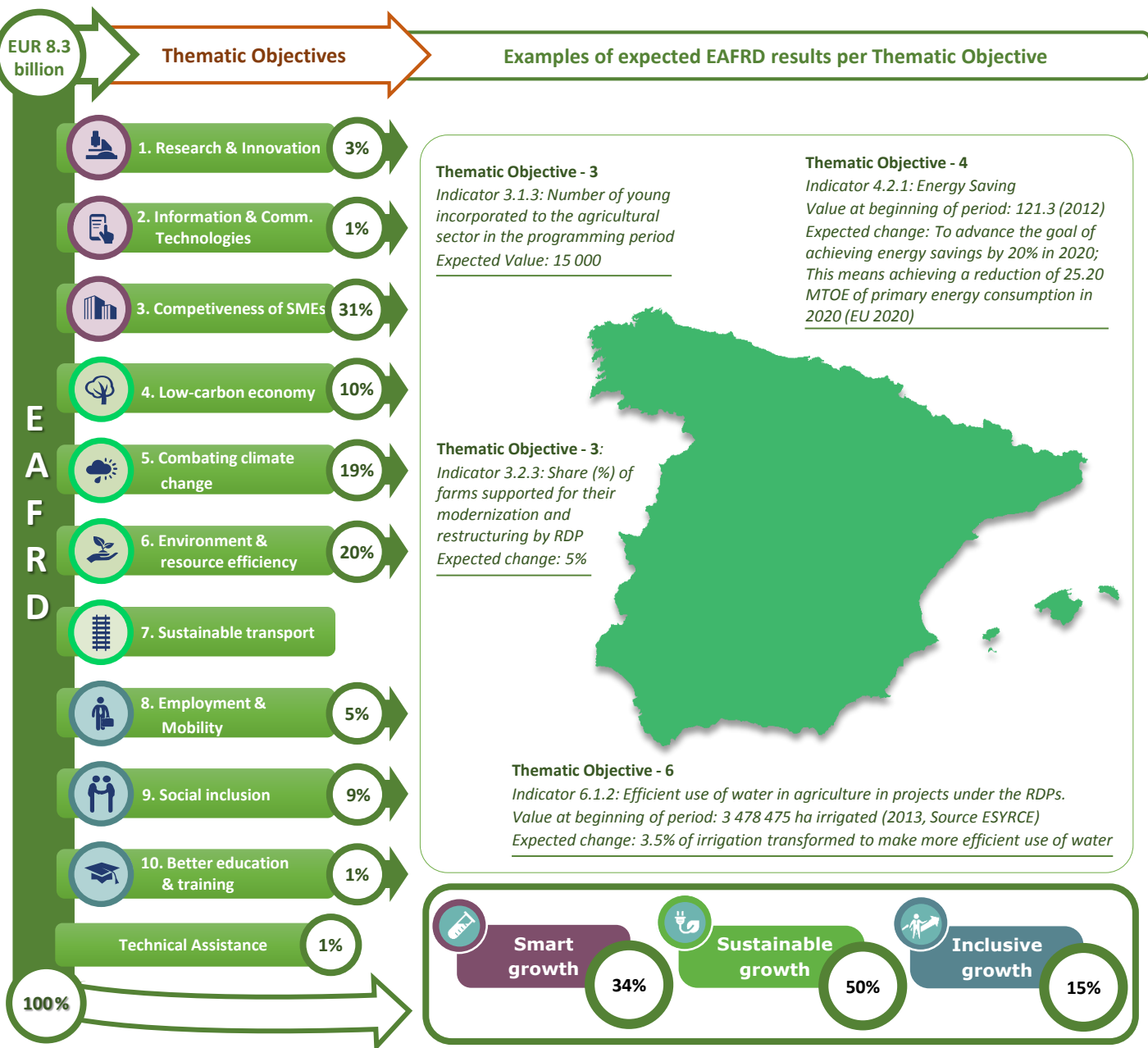


### Thematic objectives supported in Spain and ESIF contributions





## Integrated approaches to territorial development in rural areas

### Community Led Local Development (CLLD) / LEADER

**CLLD/LEADER funding in Spain:** 8.82% of the total EAFRD budget

**Multi-funded Local Development Strategies:** Local development strategies will be implemented in rural areas funded exclusively from the EAFRD, or with support from EAFRD, ERDF and ESF. To be decided jointly by Local Action Groups, managing authorities and intermediate bodies at regional level.

**Rural areas population limits derogation:** The minimum limit may be reduced to 5 000 inhabitants in mountain areas, geographically isolated areas or areas of low population density.

<b>Responsible body:</b>	Budget and Public Administration Ministry - European Funds General Department
<b>Date of PA approval:</b>	30/10/2014

**Please note:** The data and figures presented in this summary come from the European Commission approved version of the PA for Spain. The information provided in this summary should not be considered a comprehensive account of the original PA content. For the full information please see the original document.

For more information please visit: [http://ec.europa.eu/contracts\\_grants/agreements/index\\_en.htm](http://ec.europa.eu/contracts_grants/agreements/index_en.htm)