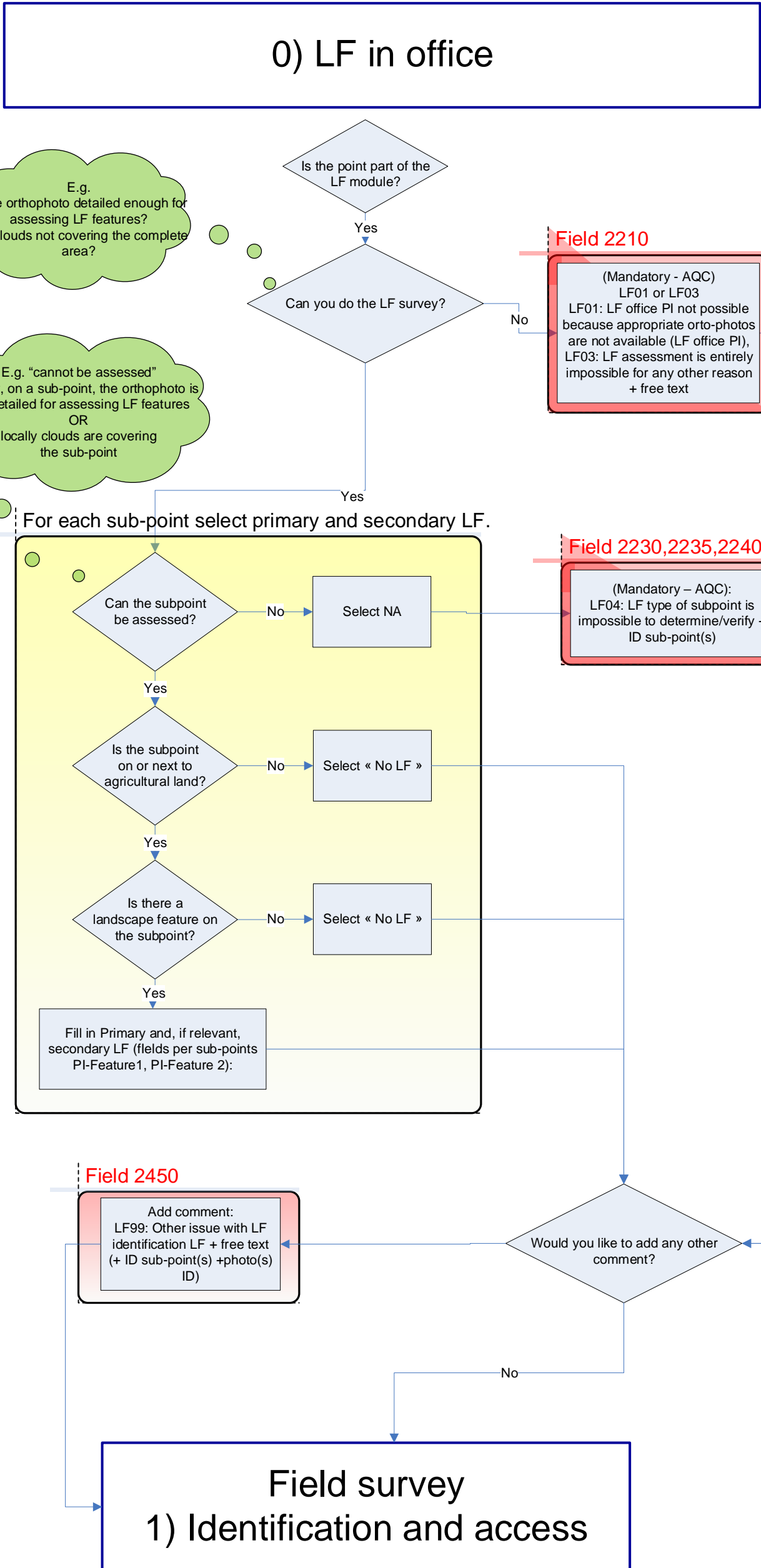


C1 Annex 9.10. DECISION TREE FOR SURVEYORS (LUCAS 2022)

DOCUMENT CHANGE RECORD			
ISSUE	DATE	CHANGE AUTHORITY / AUTHOR	ISSUE LOG
V1.0	08.07.2021	EUROSTAT E4.LUCAS	Original

DECISION TREE FOR SURVEYORS (LUCAS 2022)



If a LUCAS point is part of the LF module and has not been assessed through LF office PI the point is blocked and cannot go to the field survey.

The minimum information to be collected through LF office PI is:
"Can you do the LF survey?"

And based on the answer to this question (Yes/No), the connected fields and/or comments need to be filled in.

If the answer is « No » a comment is needed to complete the LF office PI.

IN-FIELD DECISION TREE FOR SURVEYORS (LUCAS 2022)

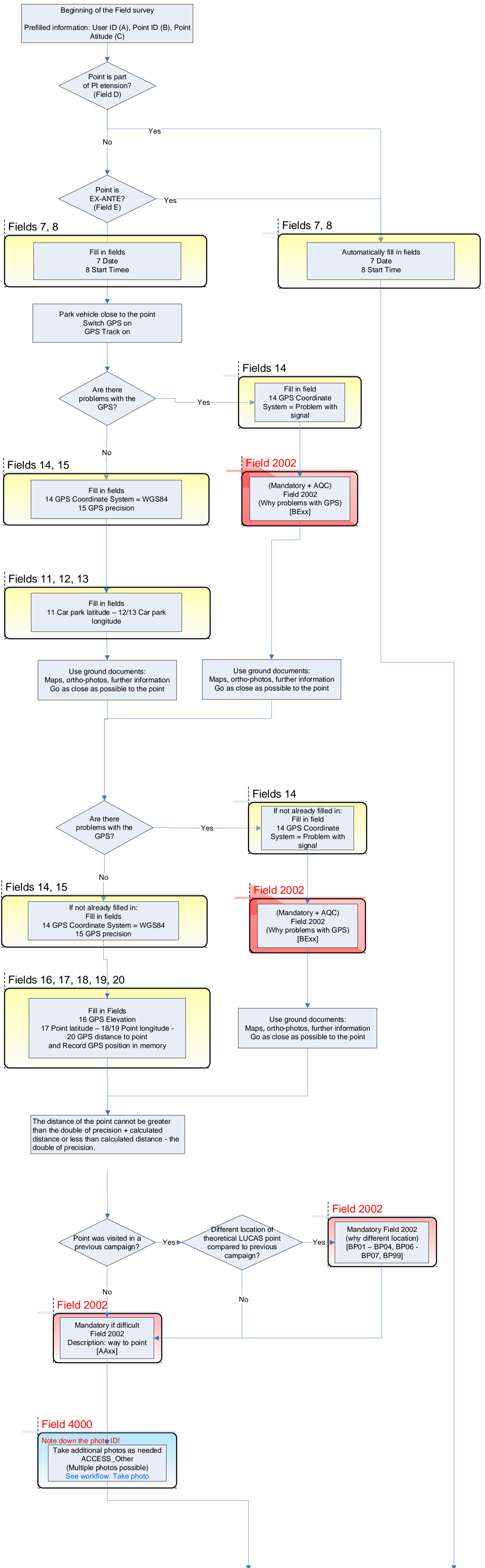
If a LUCAS point is Part of the LF module and has not been assessed through LF office PI the point is blocked and cannot go to the field survey.

The minimum information to be collected through LF office PI is:
 "Can you do the LF survey?"

And based on the answer to this question (Yes/No), the connected fields and/or comments need to be filled in.

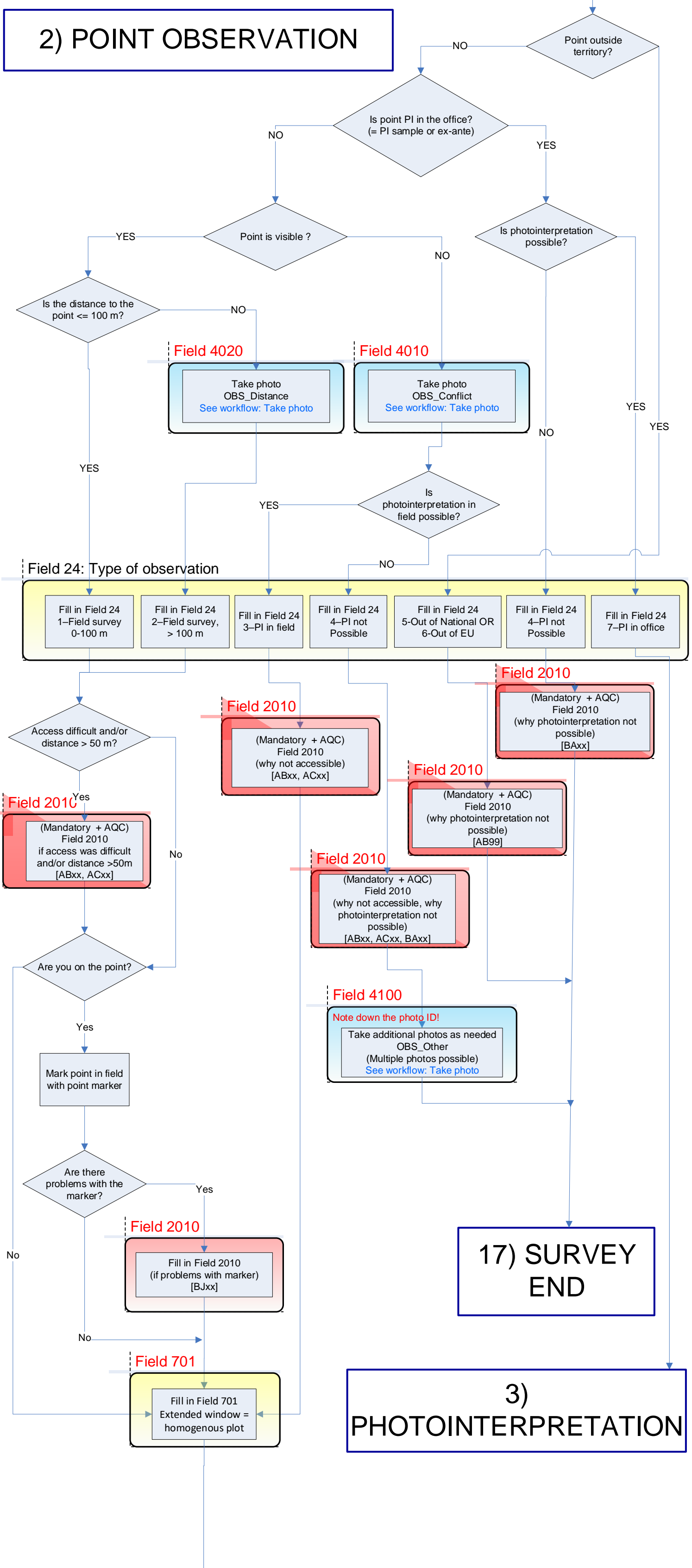
If the answer is « No » a comment is needed to complete the LF office PI.

1) IDENTIFICATION AND ACCESS TO THE POINT



2) POINT OBSERVATION

2) POINT OBSERVATION

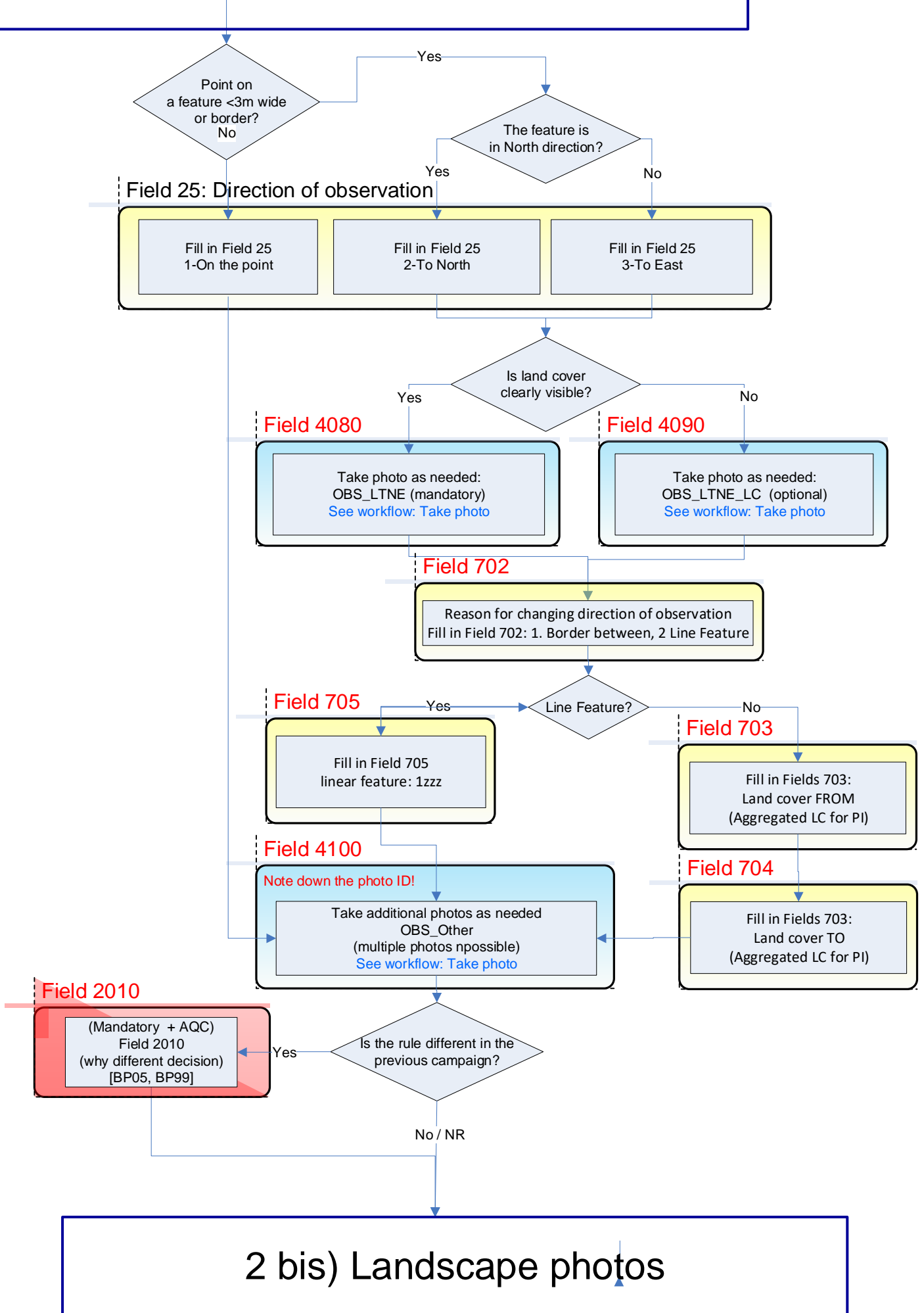


2 bis) DIRECTION OF OBSERVATION

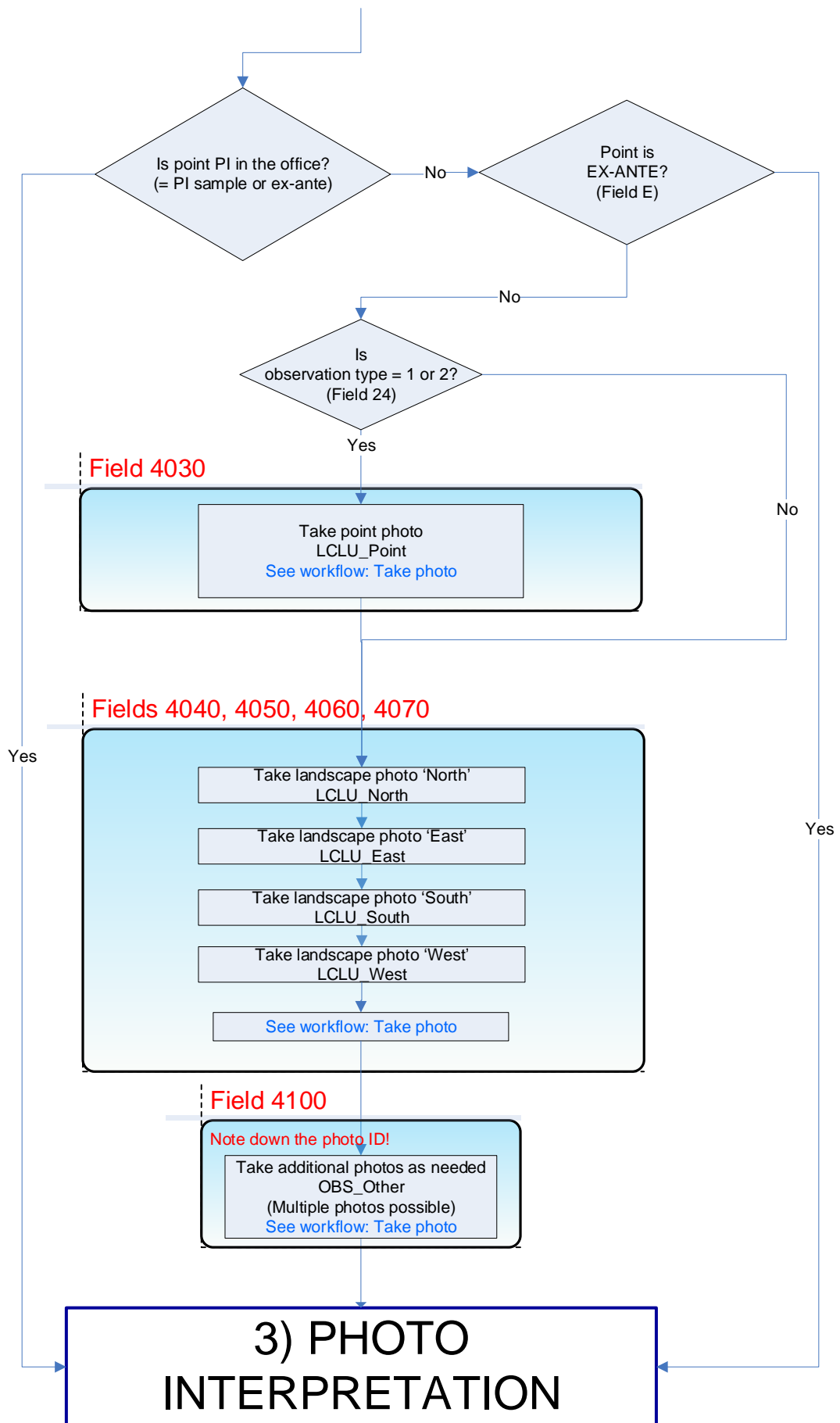
**17) SURVEY
END**

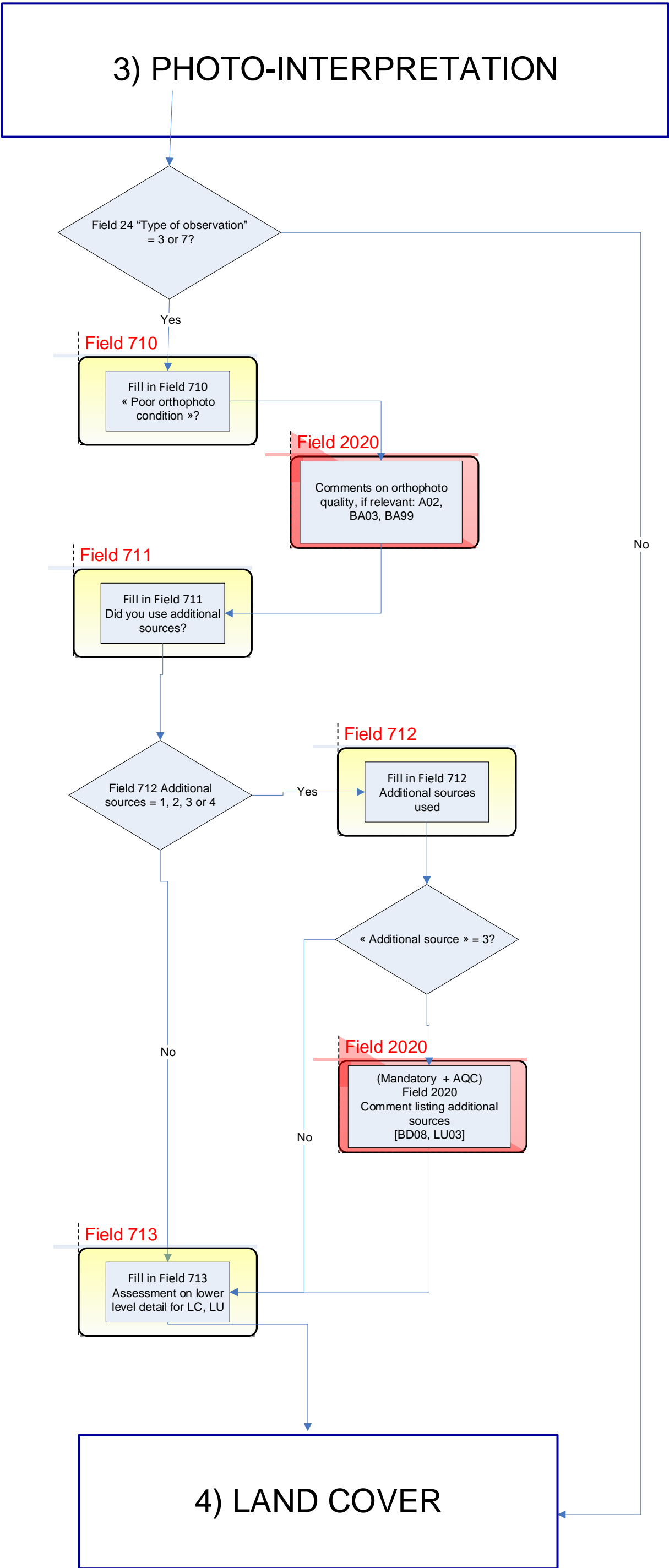
**3)
PHOTOINTERPRETATION**

2 bis) DIRECTION OF OBSERVATION



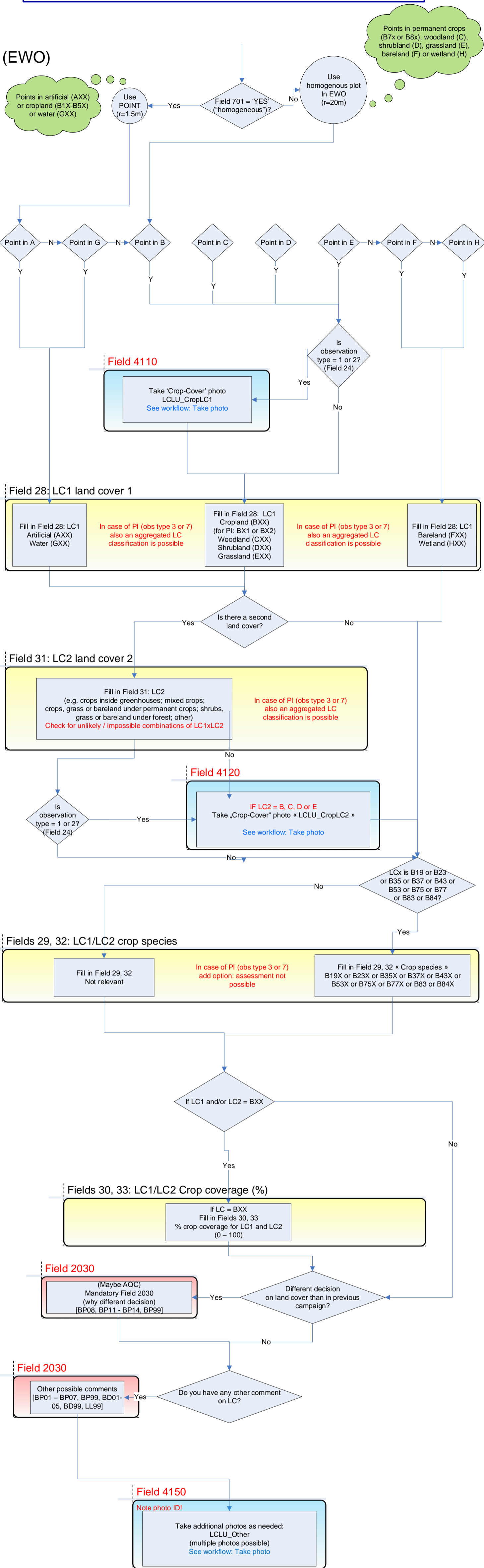
2 bis) LANDSCAPE PHOTOS





4) LAND COVER

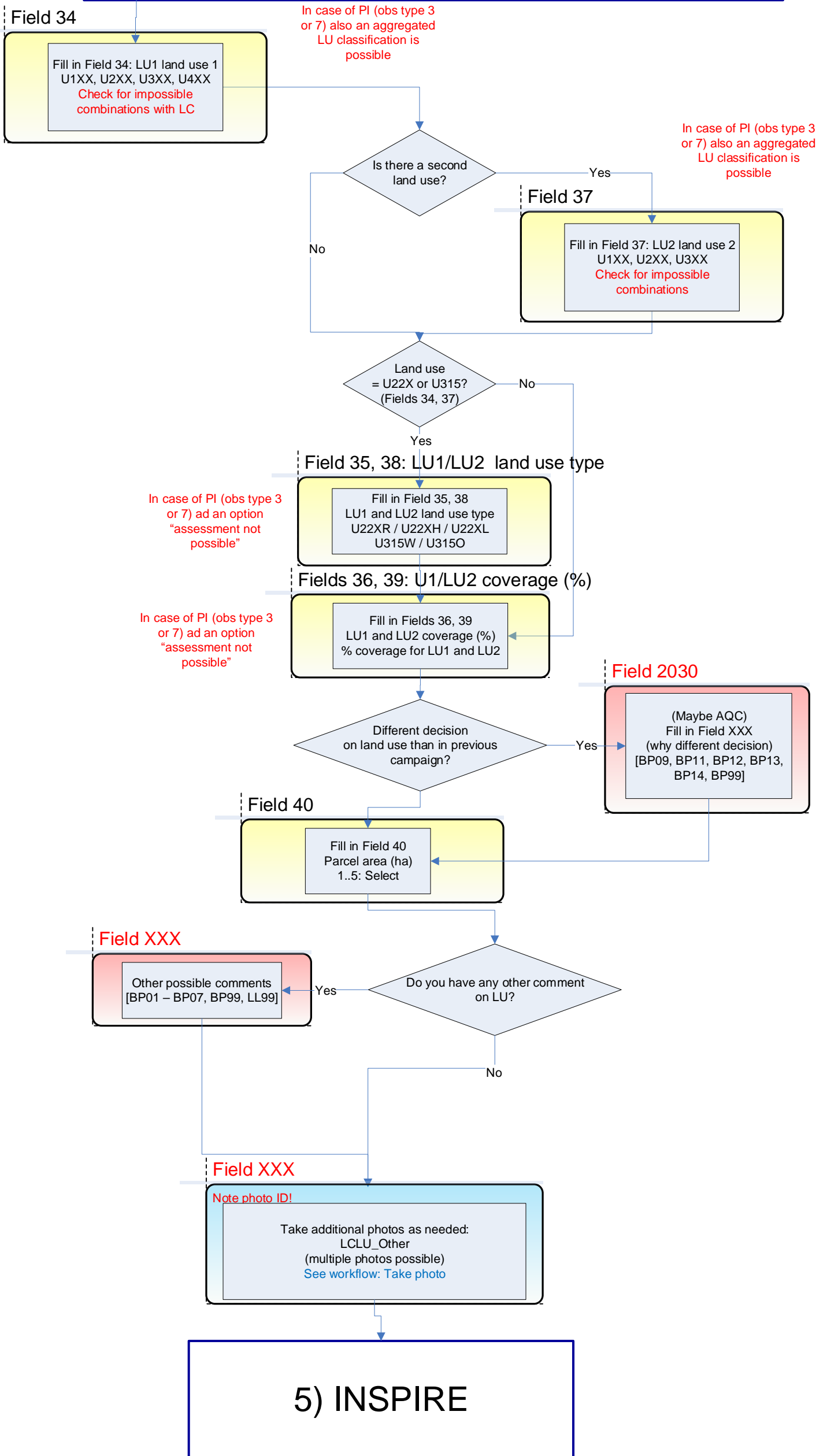
(EWO)



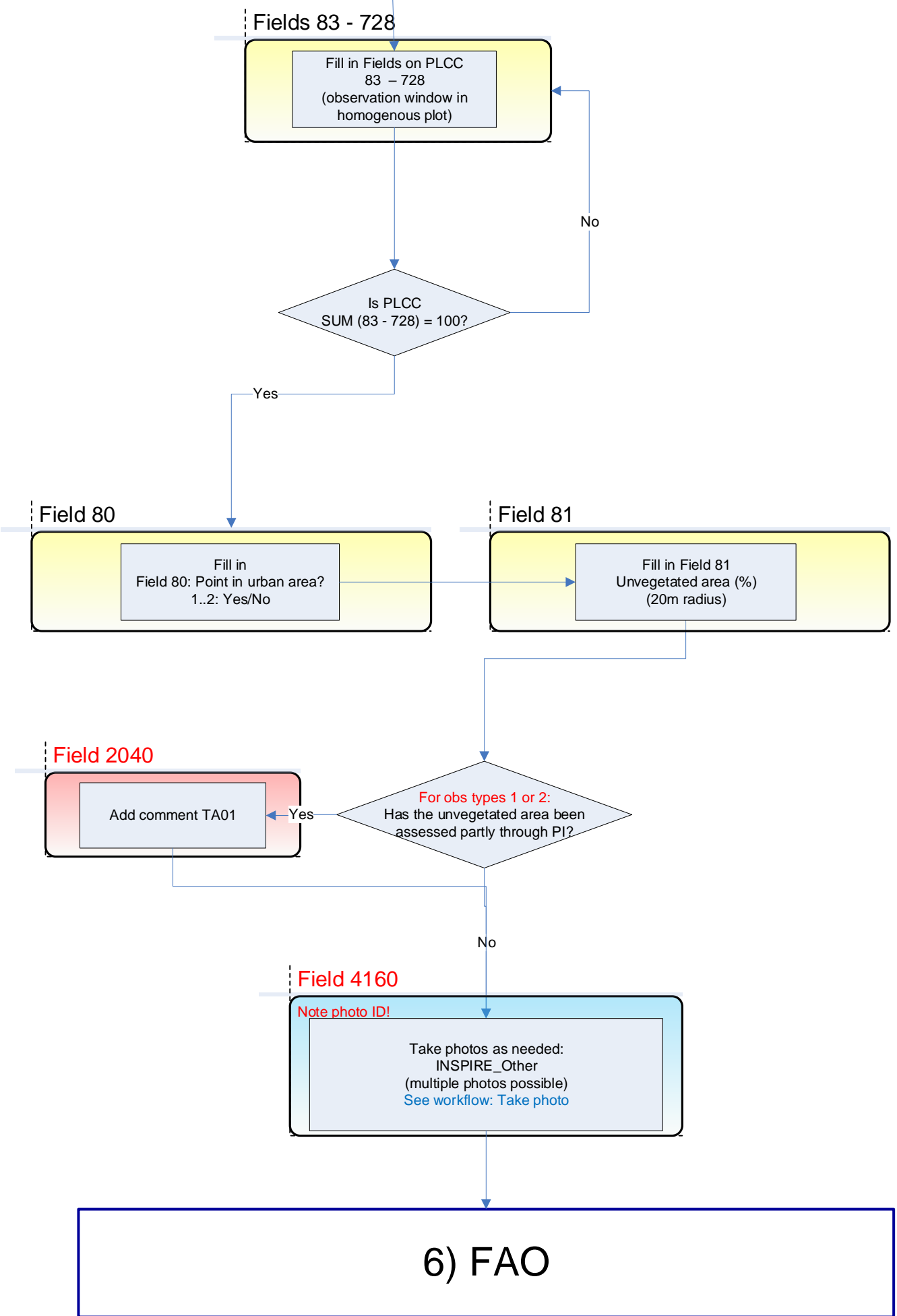
4 bis) LAND USE

IN-FIELD DECISION TREE FOR SURVEYORS (LUCAS 2022)

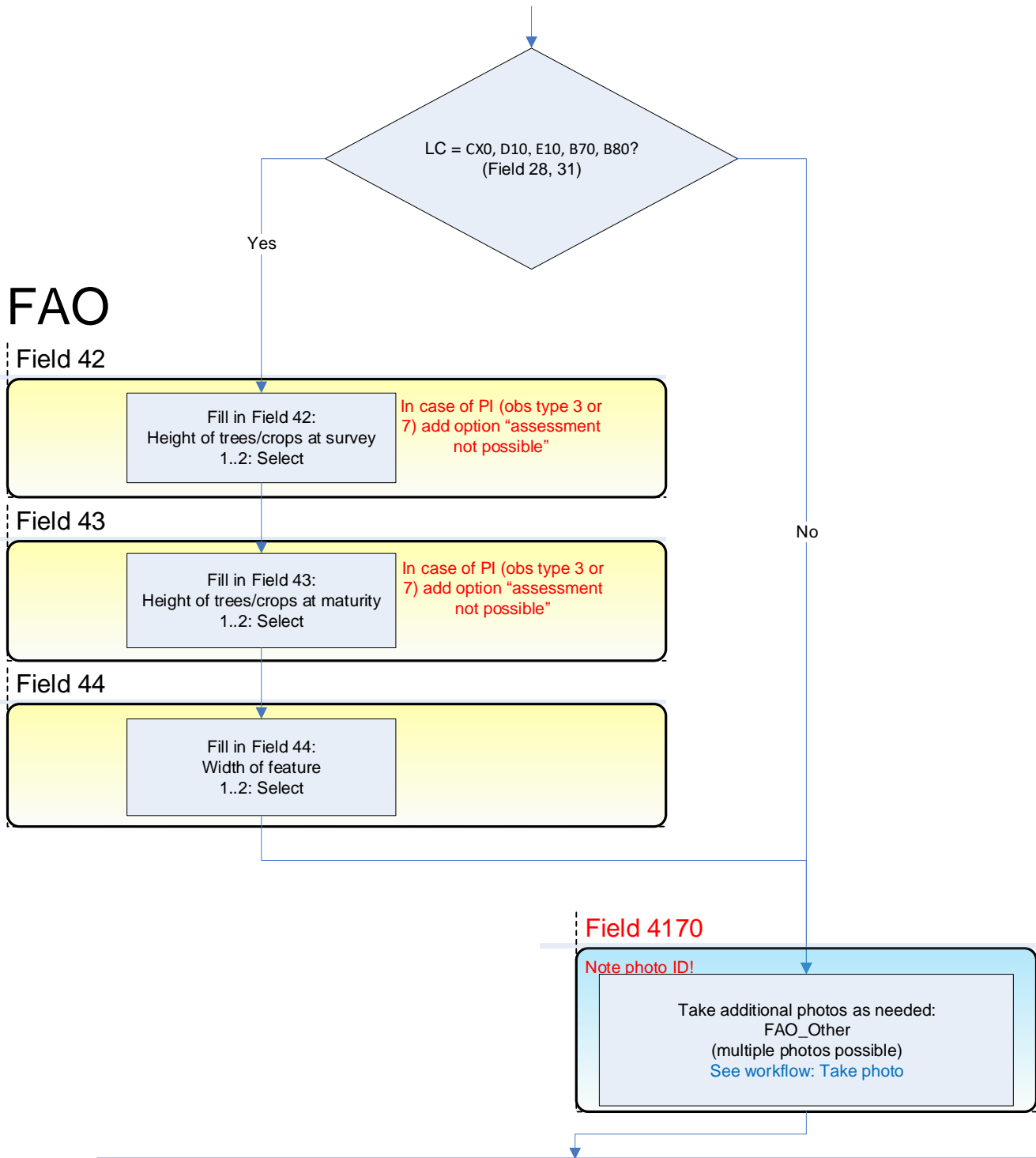
4bis) LAND USE



5) INSPIRE



6) FAO



7) LAND MANAGEMENT

7) LAND MANAGEMENT

LC = BXX, CXX, DXX, EXX, FXX, HXX?

Yes

Field 49

Fill in
Field 49: Presence of stone walls
1..3: Select

Field 730

Fill in
Field 730: Presence of hedgerows
1..2: Yes/No

Field 51

Fill in
Field 51: Presence of grass margins
1..3: Select

Field 731

Fill in
Field 731: Presence of combined
grass margin + hedgerow
1..2: Yes/No

Field 732

Fill in
Field 732: Presence of soil surface
covers: standing vegetation
1..2: Yes/No

Standing
vegetation =
yes

Yes

Field 733

Fill in
Field 733: % of surface covered by
standing vegetation
1..4: Select

Field 734

Fill in
Field xx: Presence of soil surface
covers: Crop residues
1..2: Yes/No

Crop residues
= yes

Yes

Field 735

Fill in
Field xx: % of surface covered by crop
residues
1..4: Select

No

Field 2050

Possible comment
[QA99]

Do you have any comment
on land management?

Yes

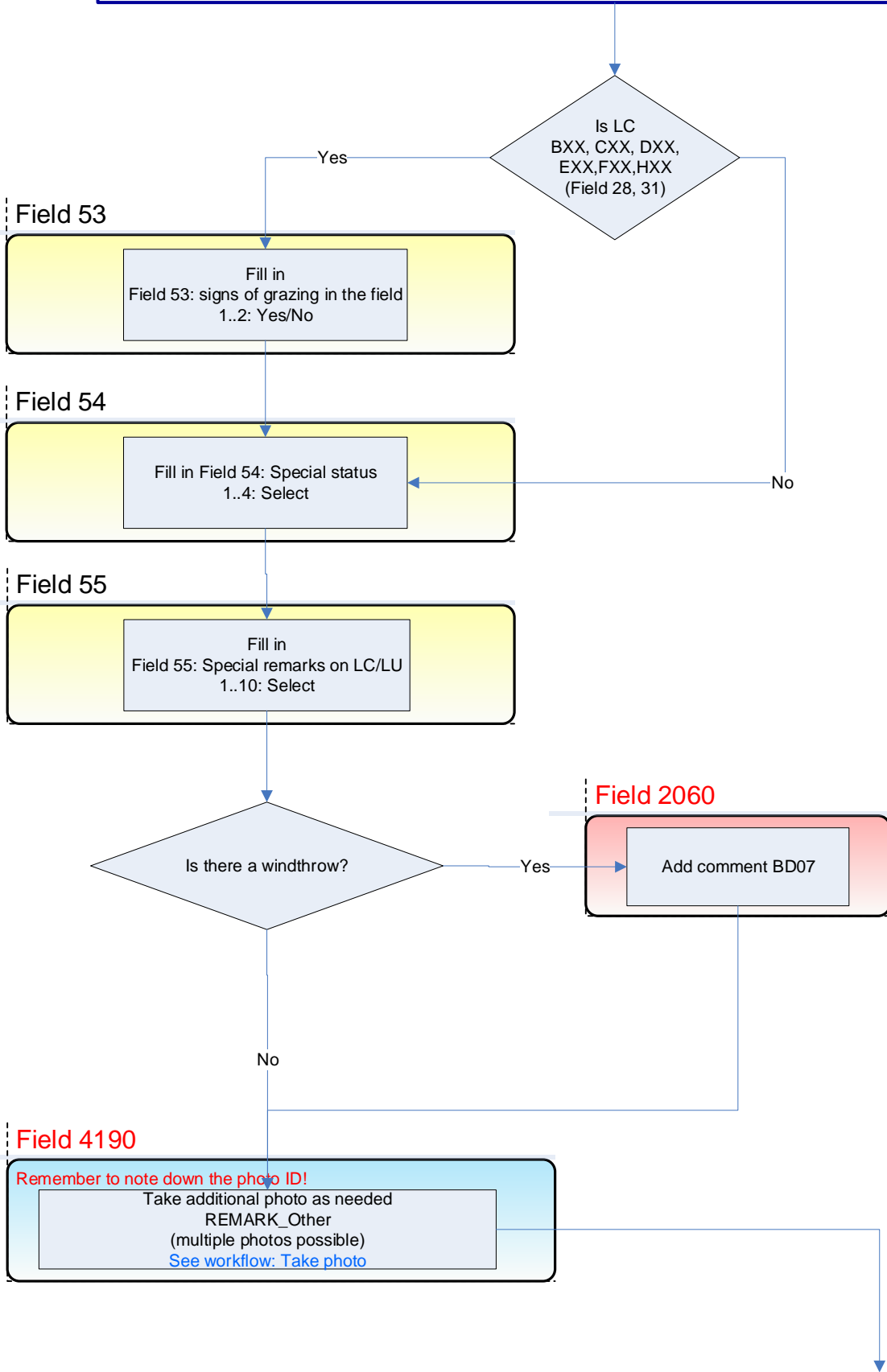
No

Field 4180

Note photo ID!
Take additional photos as needed:
LANDMNG_Other
(multiple photos possible)
See workflow: Take photo

8) SPECIAL REMARKS

8) SPECIAL REMARKS



9) GULLY EROSION

9) GULLY EROSION

Can you see signs of gully erosion?

Yes

No

Field 740: Can you see signs of Gully erosion

Fill in Field 740
Yes

Fill in Field 740
No

Field 741: Type of gully erosion

Fill in
Field 741 : types of gully erosion
Select 1..3
(multiple selection possible)

For the point and for each cardinal direction fill in:
Direction (presence/absence), number of gullies,
distance from the point

Type of gully 1 or 2?

No

Yes

Fields 742, 743, 744, 745: Info on largest gully

Fill in
Field 742 : Direction
Select 1..4
(multiple selection possible)

Fill in
Field 743 : Mean
length (m)
Select 1..5

Fill in
Field 744: Mean
width (m)
Select 1..5

Fill in
Field 745: Mean
depth (m)
Select 1..5

Field 4200

Take a photo of the biggest gully
« GULLY_Biggest »
[See workflow: Take photo](#)

Field 2070

Other possible comments
[RA99]

Do you have any other comment
on erosion?

Yes

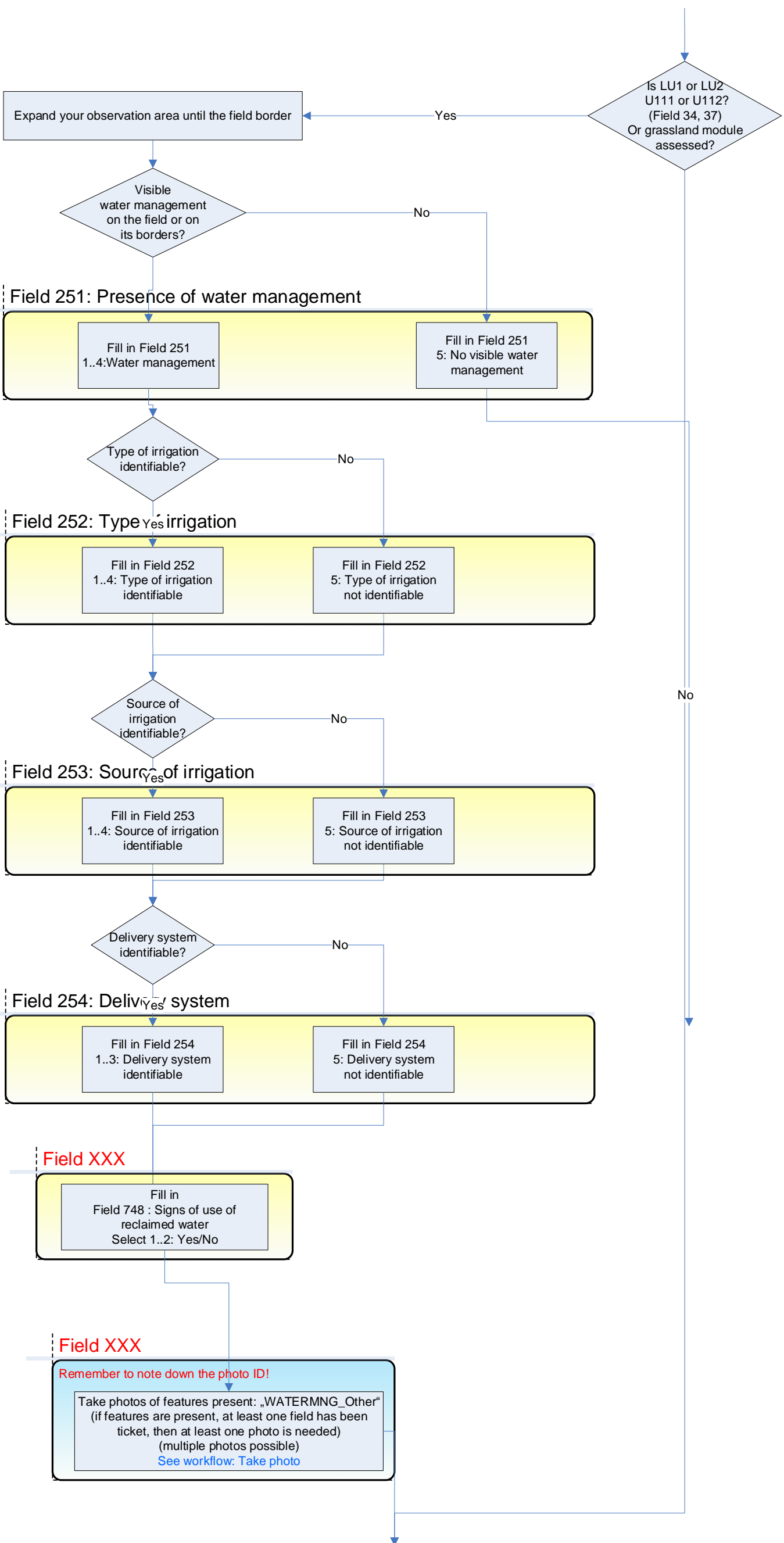
No

Field 4210

Note photo ID!
Take additional photos as needed:
« GULLY_Other »
(multiple photos possible)
[See workflow: Take photo](#)

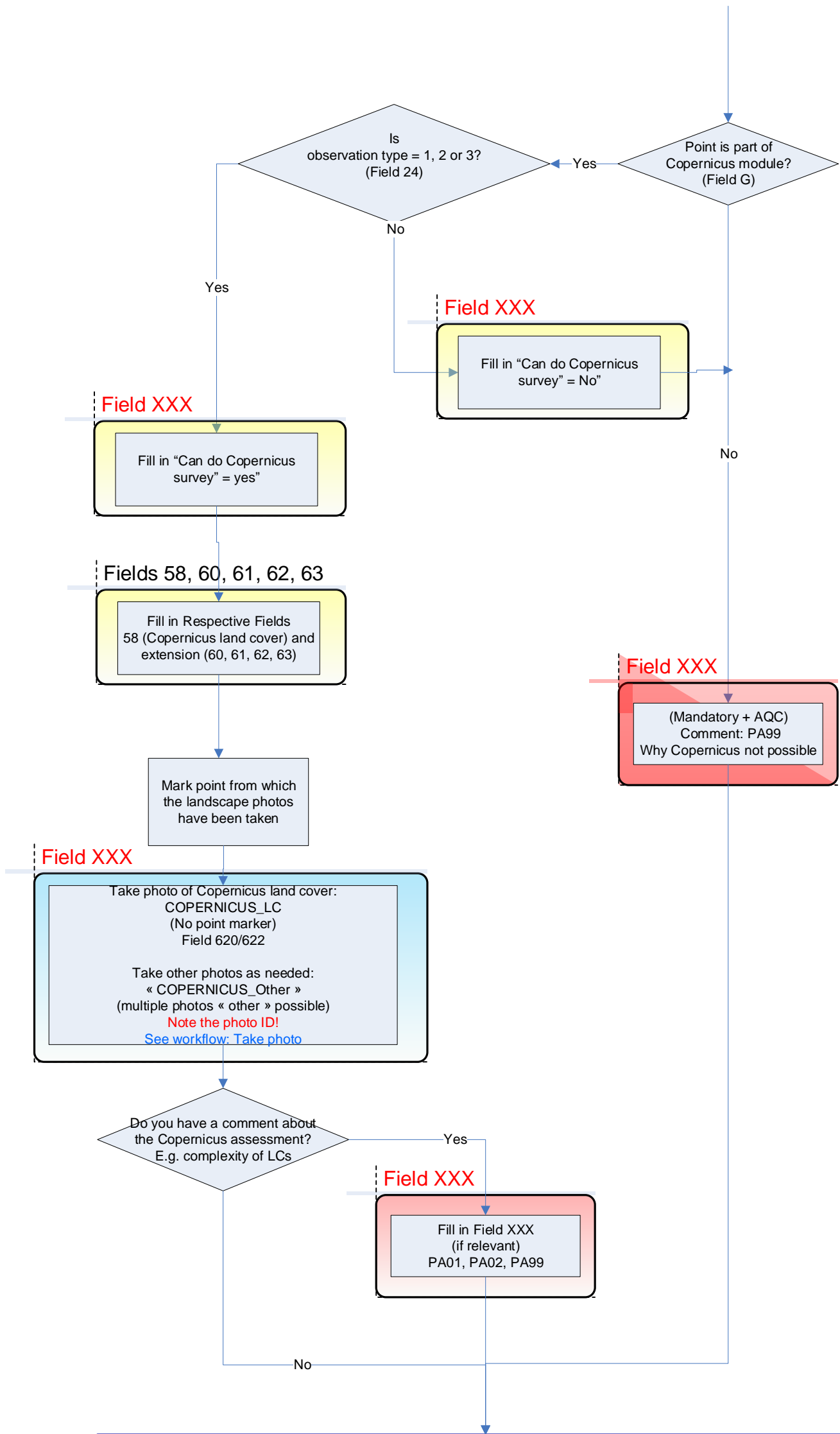
10) WATER MANAGEMENT

10) WATER MANAGEMENT



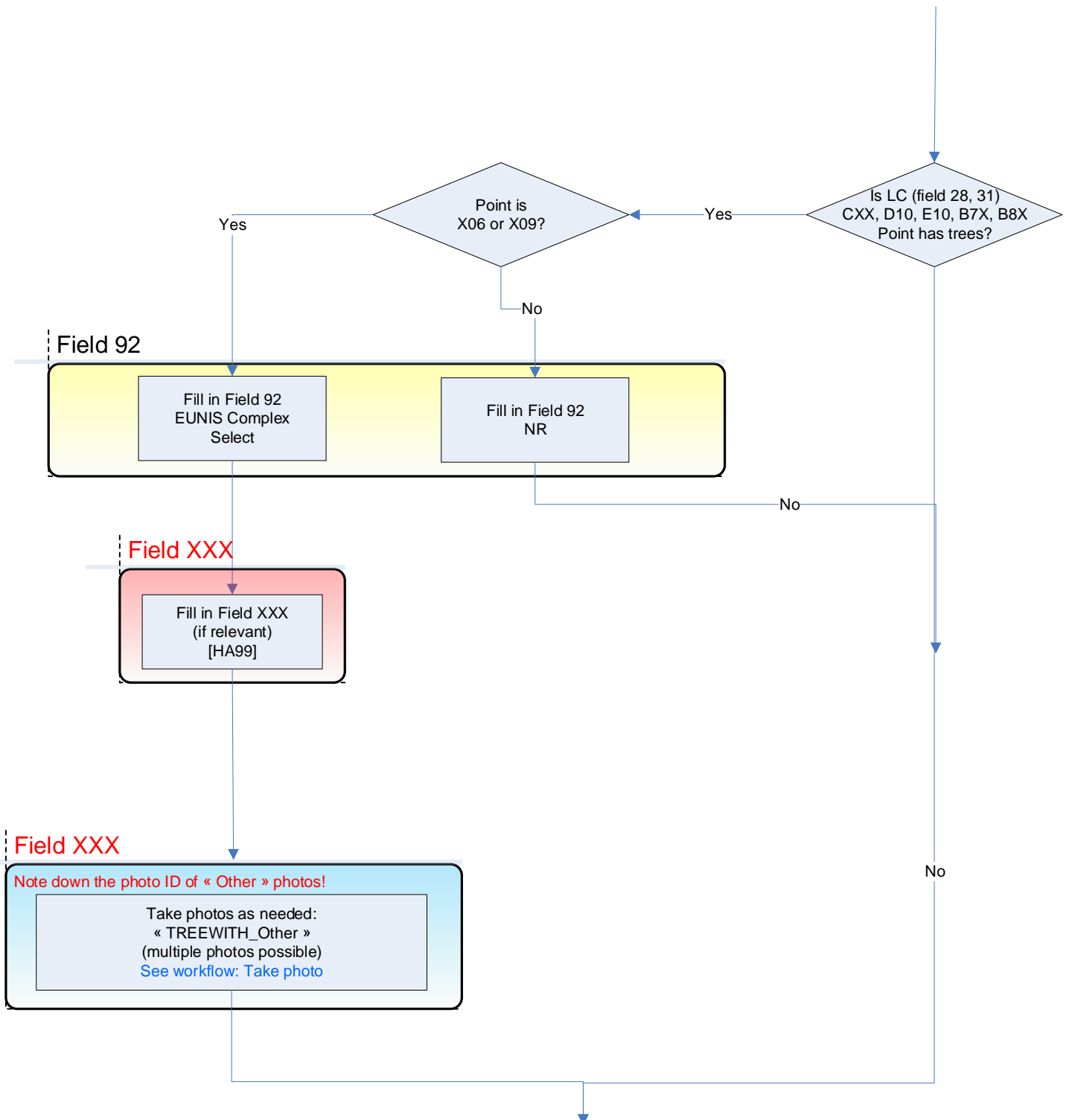
11) COPERNICUS

11) COPERNICUS



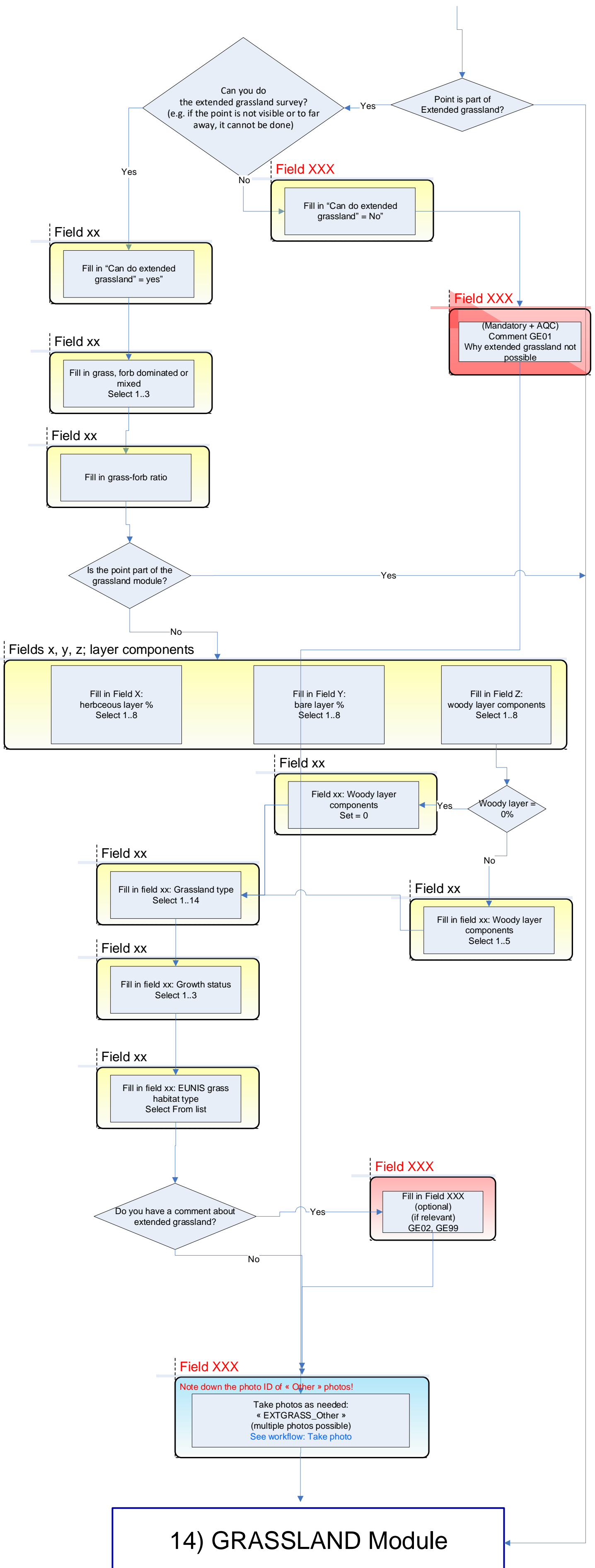
12) TREES WITH SECONDARY CROPS

12) TREES WITH SECONDARY CROPS (former EUNIS HABITAT COMPLEX)

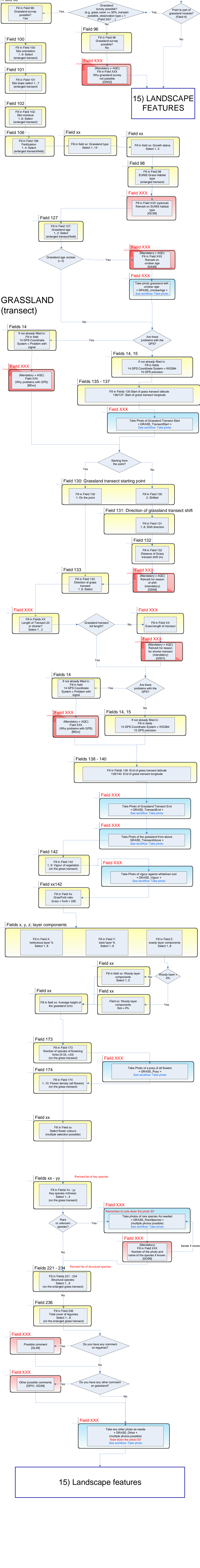


13) EXTENDED GRASSLAND

13) EXTENDED GRASSLAND



14) GRASSLAND

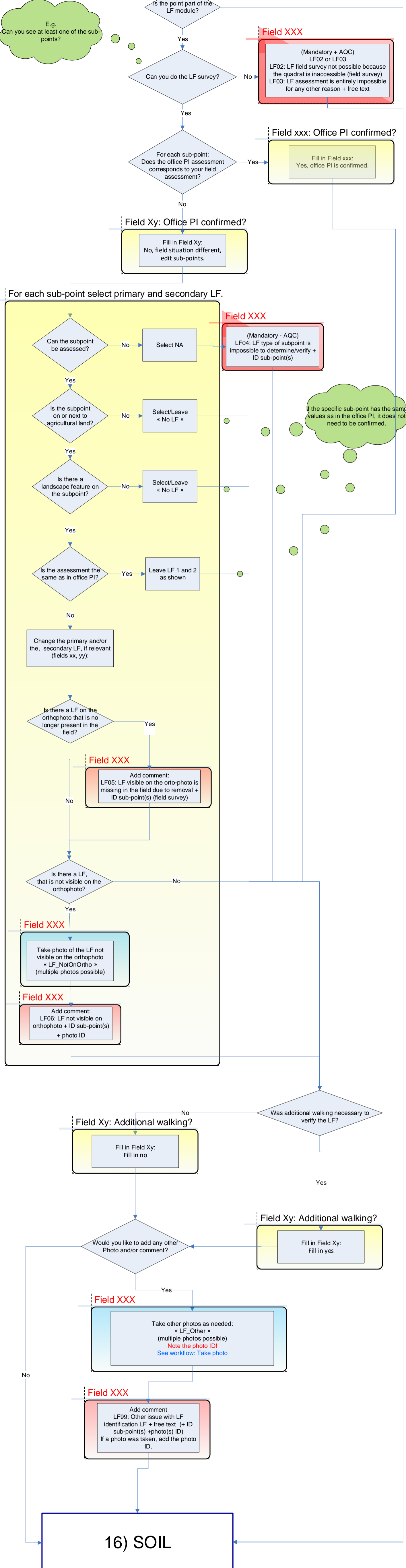


GRASSLAND (transect)

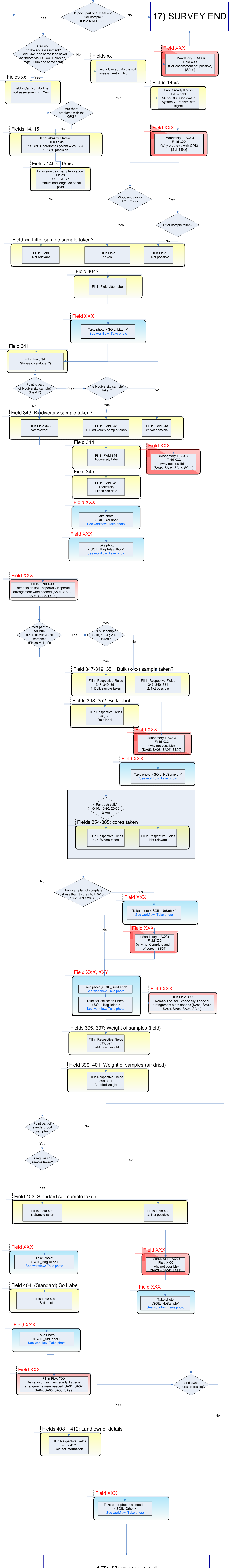
15) LANDSCAPE FEATURES

15) Landscape features

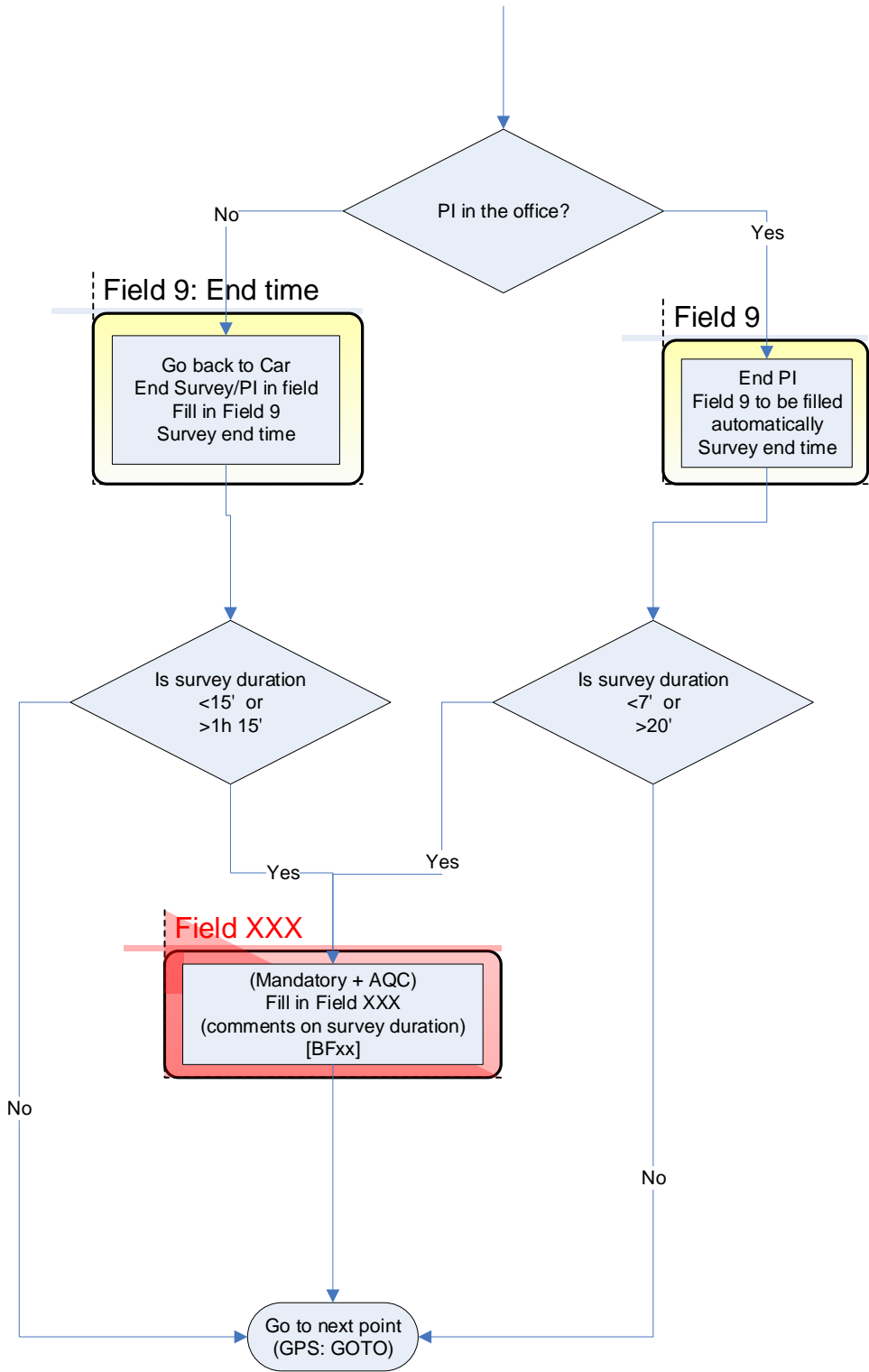
15) LF in field



16) SOIL MODULE



SURVEY END



Take photo

