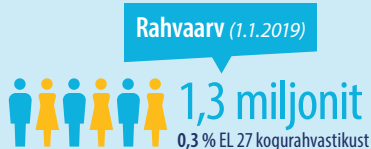
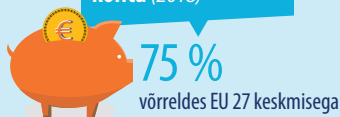


EESTI



Leibkonna kasutada olev tulu inimese kohta (2018)



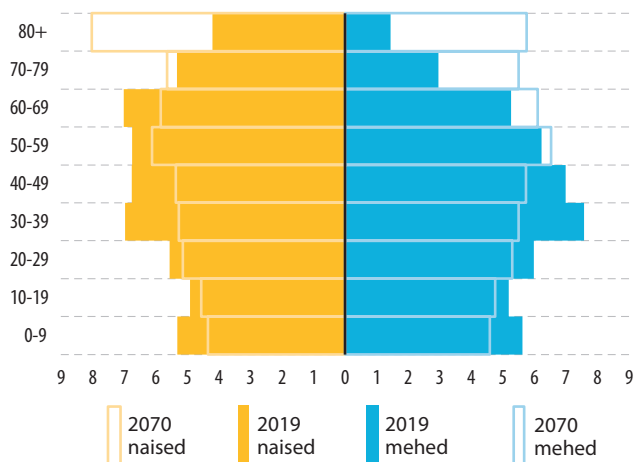
Tarbimine inimese kohta (2018)



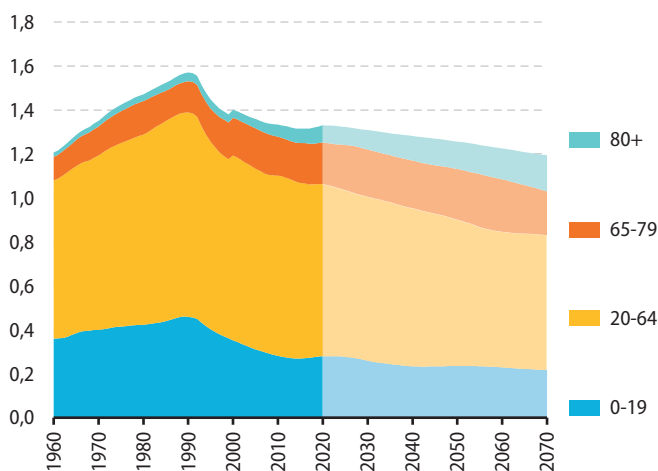
Rahvastikutihedus (2018)



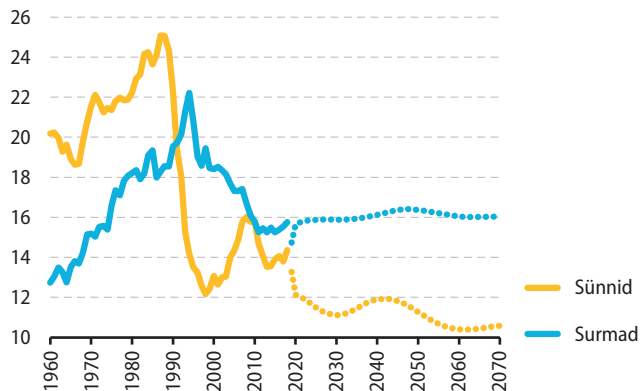
Rahvastikupüramiidid, vanuserühma osakaal kogurahvastikus (%)



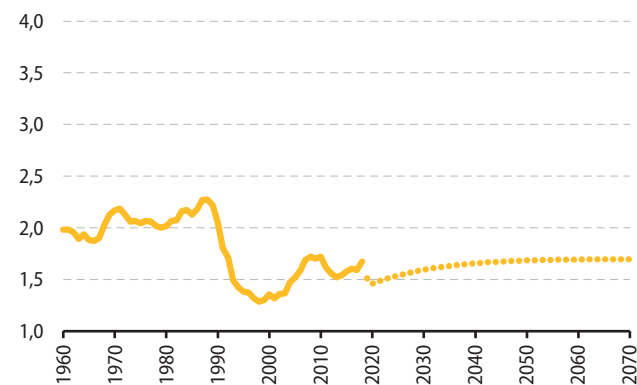
Rahvastiku vanuseline struktuur, vanuserühmad (miljonites)



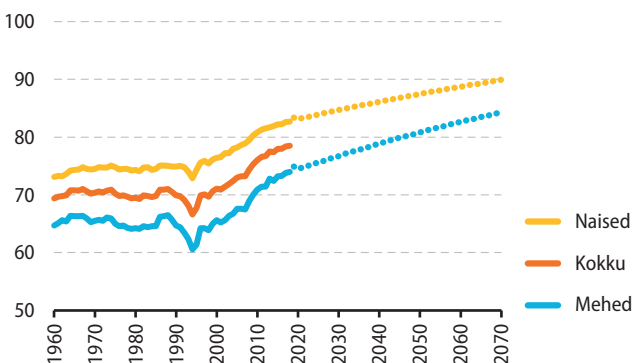
Elussünnid ja surmad (tuhandetes)



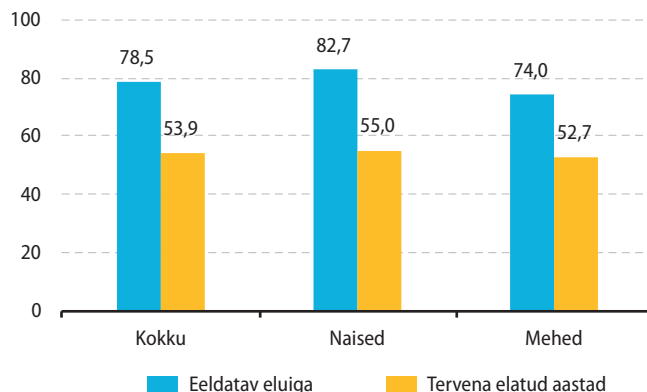
Summaarne sündimuskordaja (elussünnid naise kohta)



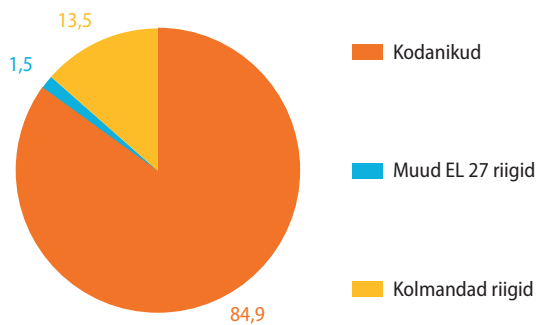
Eeldatav eluiga sünnil (aastates)



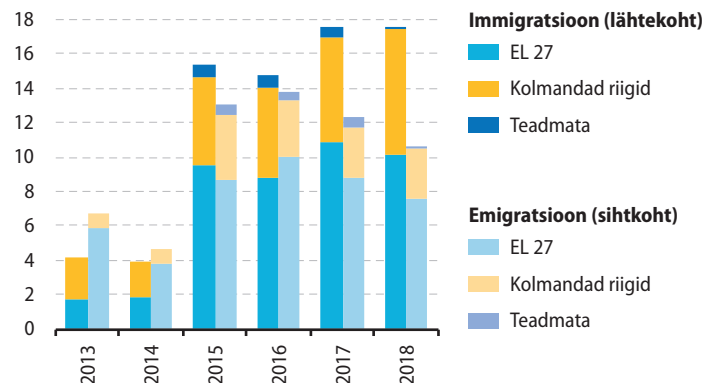
Eeldatav eluiga sünnil ja tervena elatud aastad, 2018 (aastates)



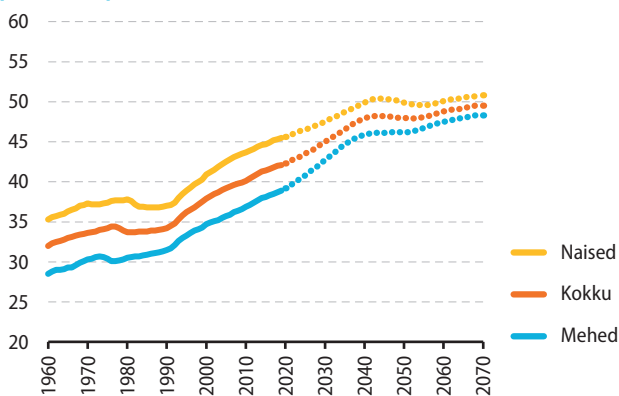
Rahvastik kodakondsuse alusel, 2019 (%)



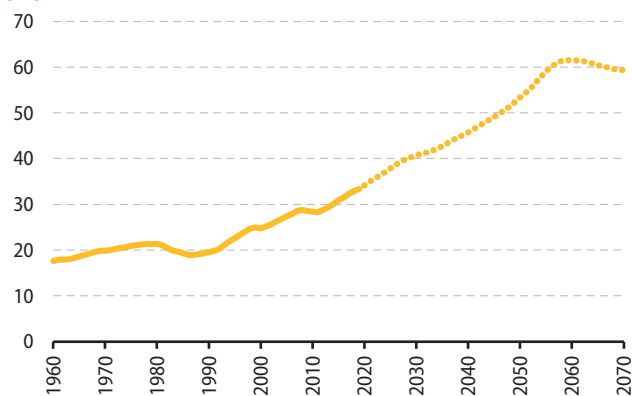
Sisseränne ja väljaränne (tuhandetes)



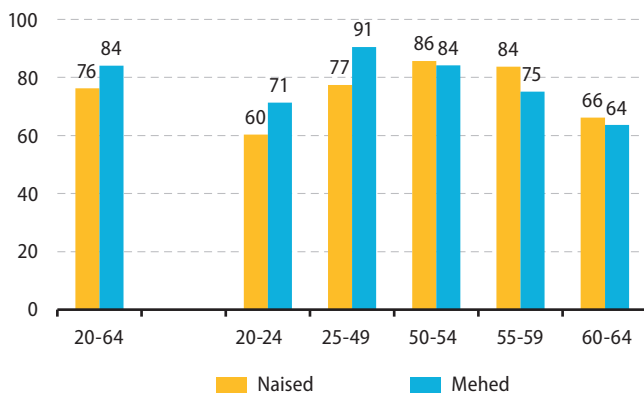
Mediaanvanus (aastates)



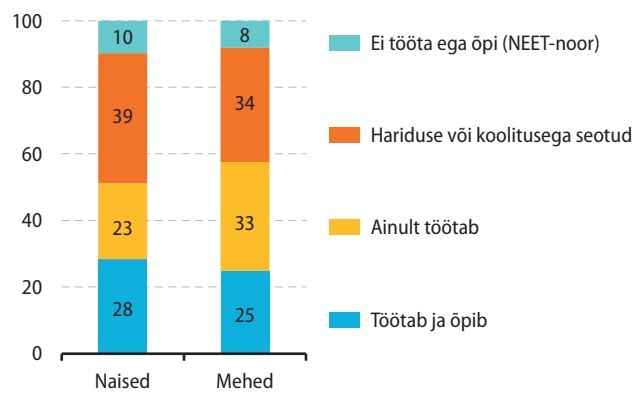
Vanadussõltuvusmäär (%)



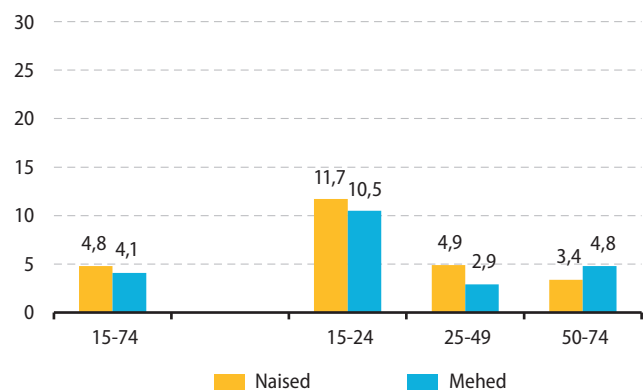
Tööhõive määr vanuse ja soo järgi, 2019 (%)



Noorte täiskasvanute (18-24aastased) haridus ja tööhõivestaatus, 2019 (%)



Töötuse määr vanuse ja soo järgi, 2019 (%)



Töötuse määr haridustasemetega kaupa (15-74aastased), 2019 (%)

