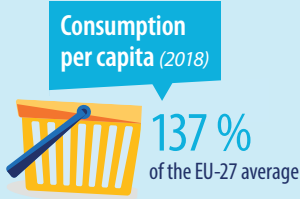
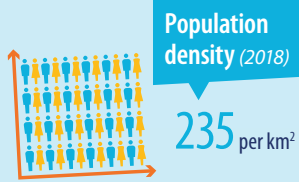
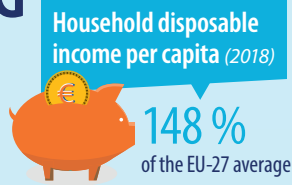
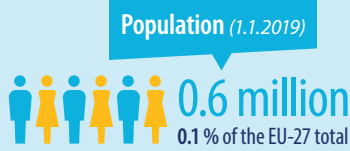
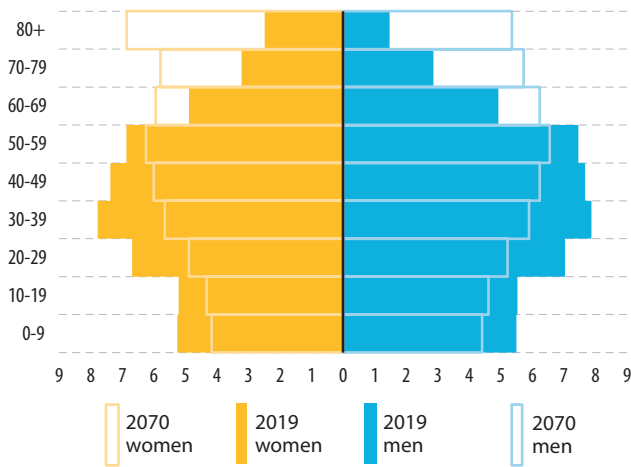


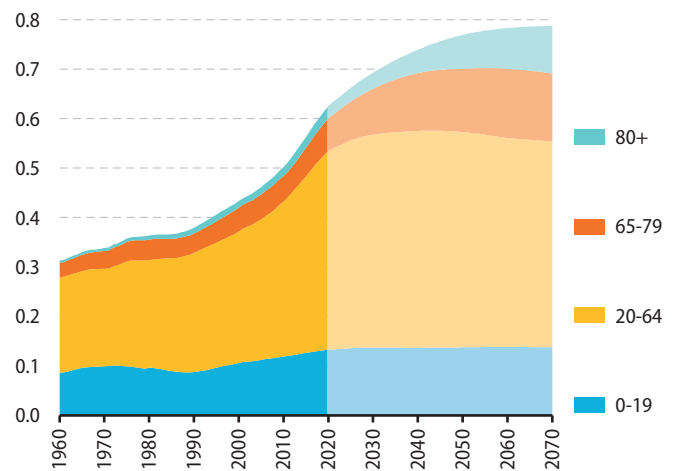
# LUXEMBOURG



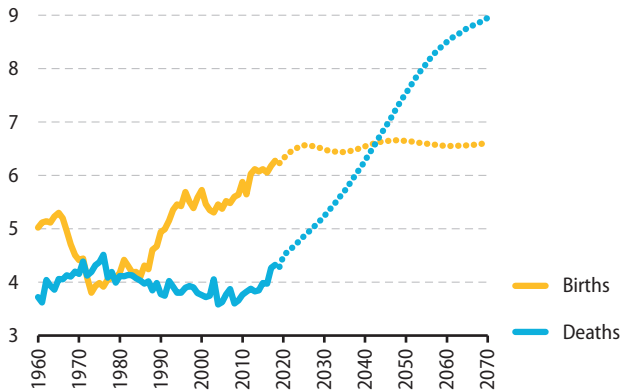
**Population pyramids, age group share of total population (%)**



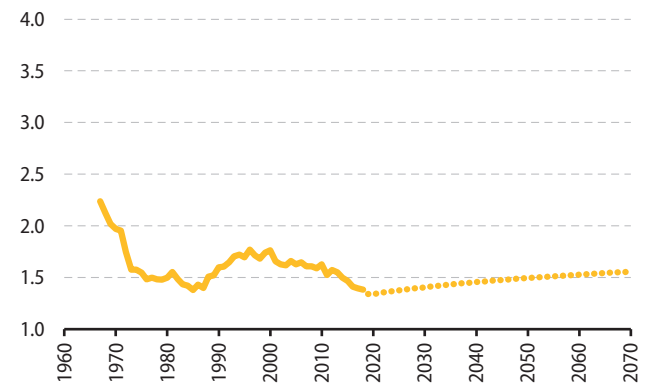
**Population age structure, age groups (millions)**



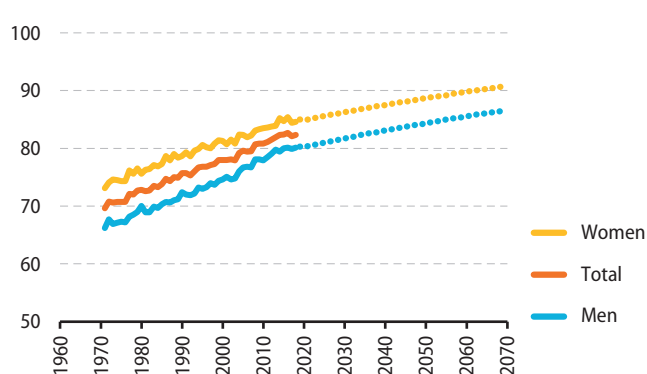
**Live births and deaths ('000s)**



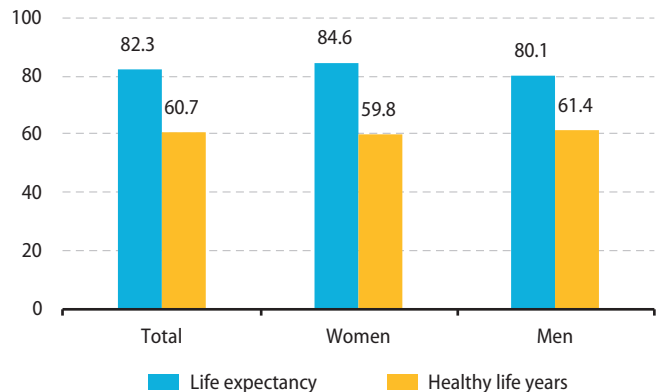
**Total fertility rate (live births per woman)**



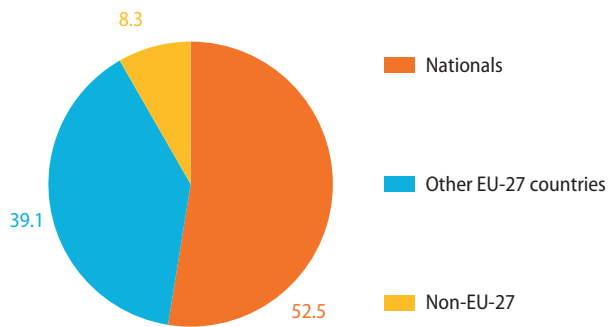
**Life expectancy at birth (years)**



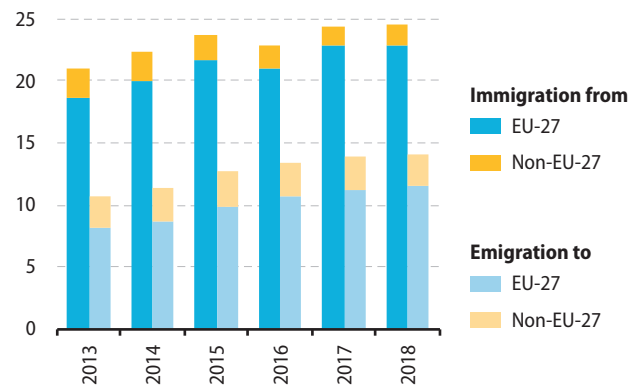
**Life expectancy and healthy life years at birth, 2018 (years)**



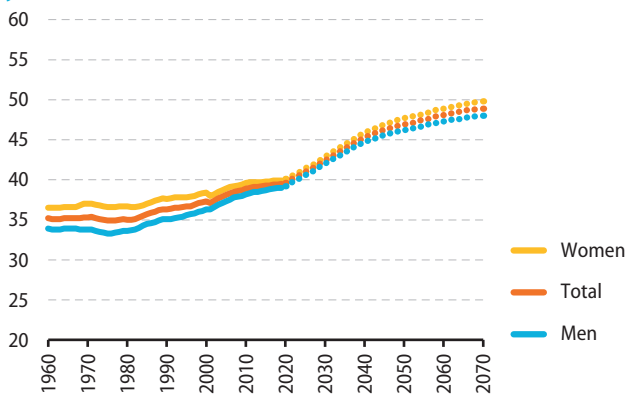
### Population by citizenship, 2019 (%)



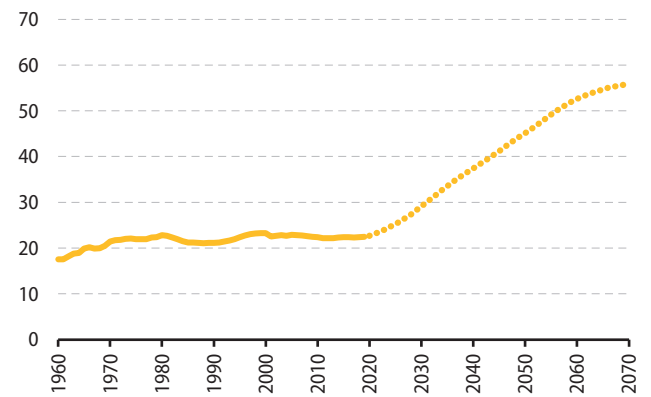
### Immigration and emigration ('000s)



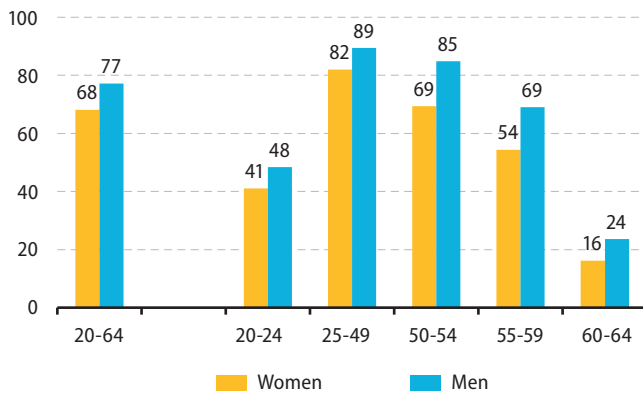
### Median age (years)



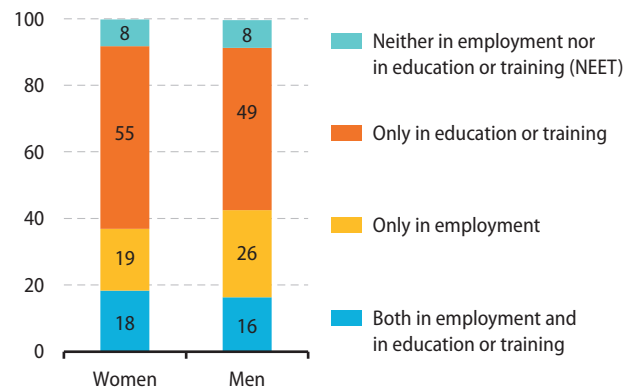
### Old-age dependency ratio (%)



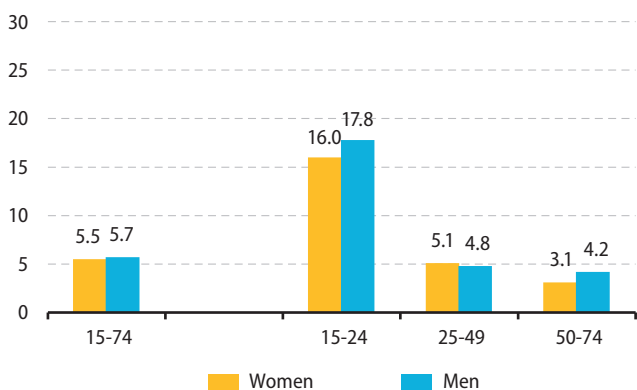
### Employment rate by age and sex, 2019 (%)



### Education and employment status of young adults (18-24 years), 2019 (%)



### Unemployment rate by age and sex, 2019 (%)



### Unemployment rate by education level (15-74 years), 2019 (%)

