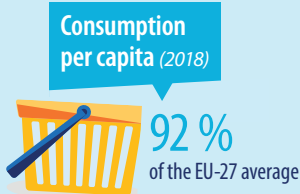
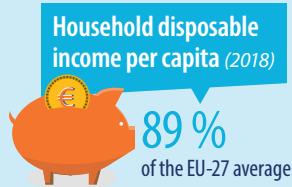
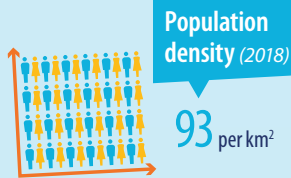
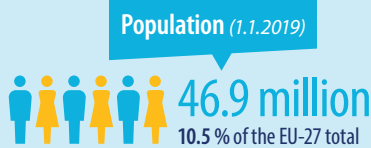
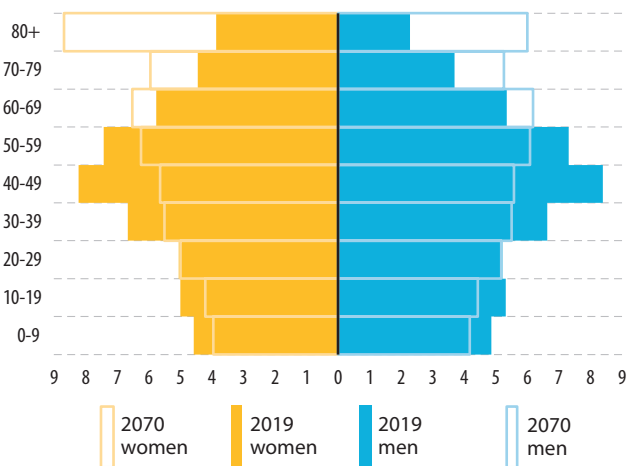


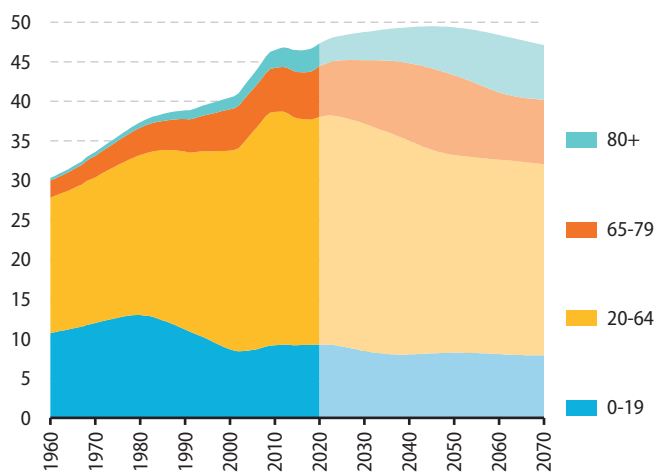
SPAIN



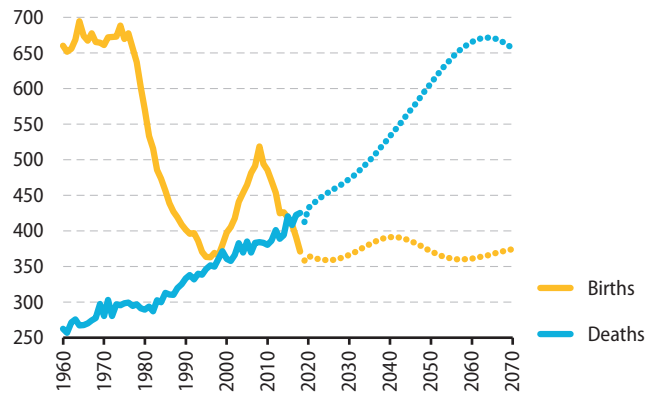
Population pyramids, age group share of total population (%)



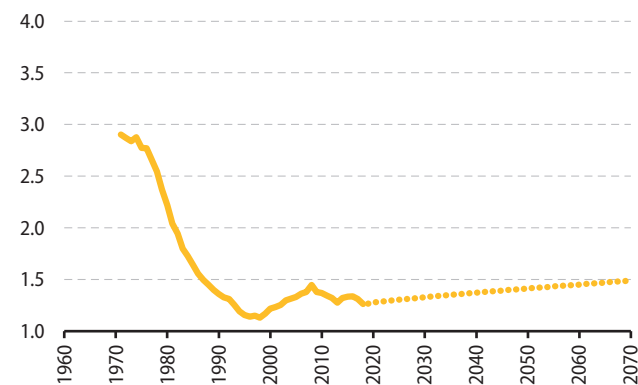
Population age structure, age groups (millions)



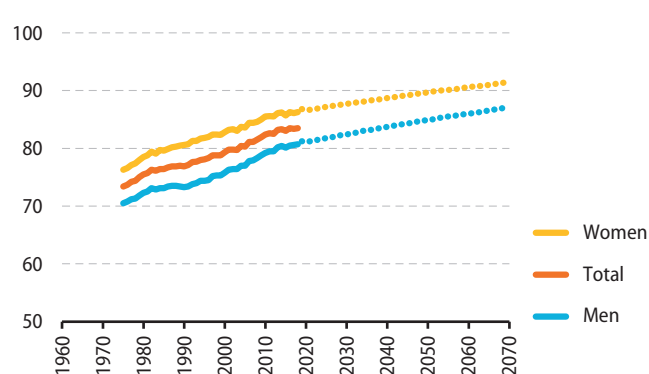
Live births and deaths ('000s)



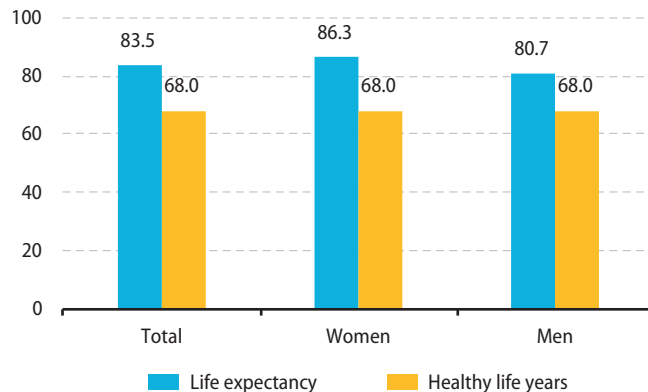
Total fertility rate (live births per woman)



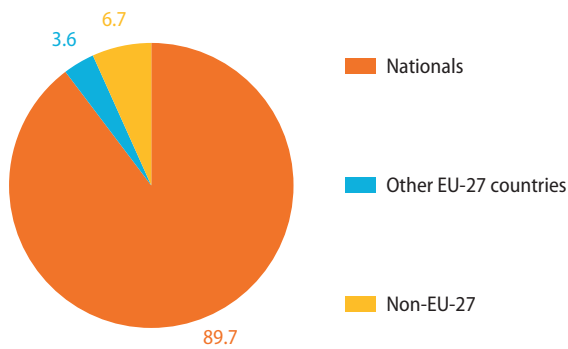
Life expectancy at birth (years)



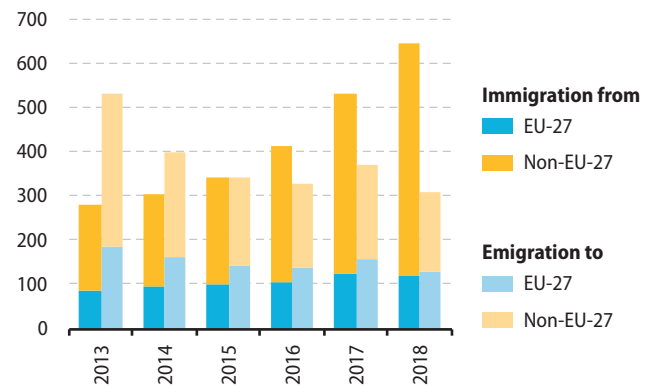
Life expectancy and healthy life years at birth, 2018 (years)



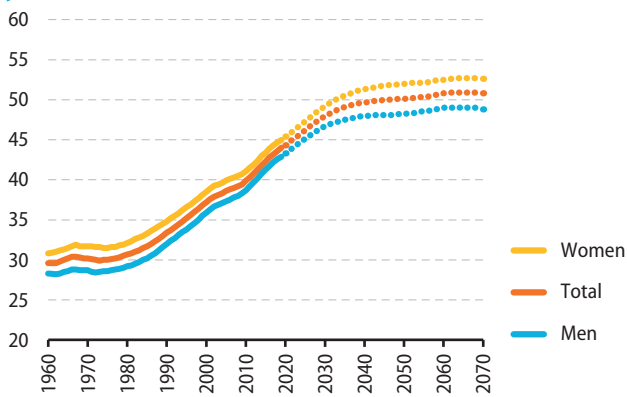
Population by citizenship, 2019 (%)



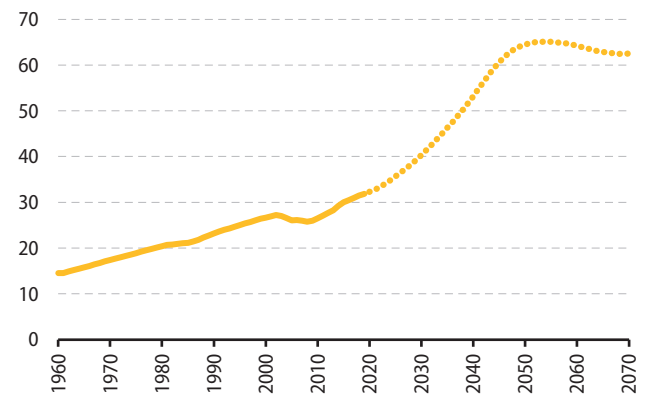
Immigration and emigration ('000s)



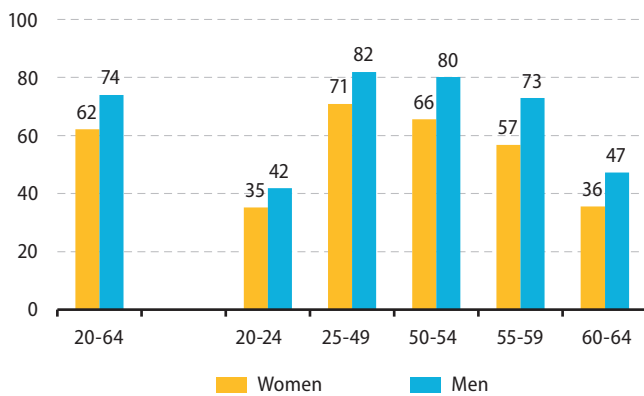
Median age (years)



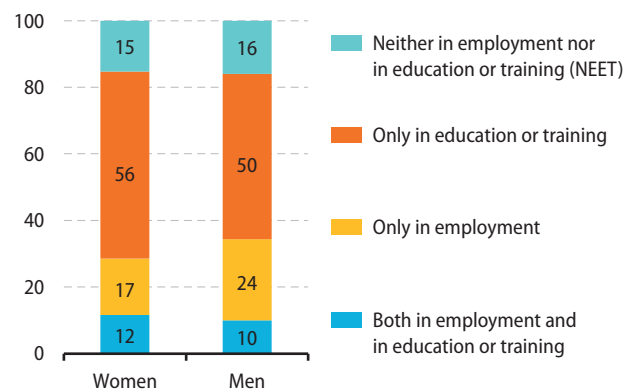
Old-age dependency ratio (%)



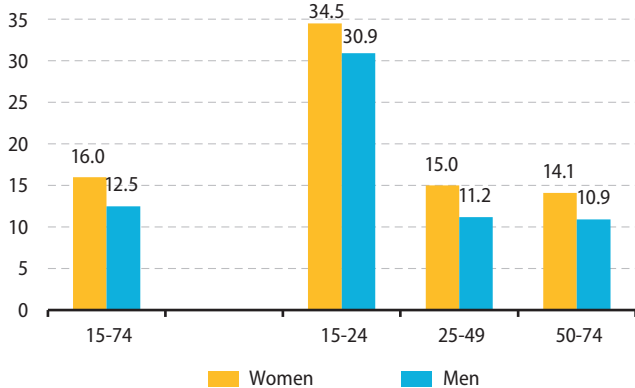
Employment rate by age and sex, 2019 (%)



Education and employment status of young adults (18-24 years), 2019 (%)



Unemployment rate by age and sex, 2019 (%)



Unemployment rate by education level (15-74 years), 2019 (%)

